

Ultraviolet Rechargeable Lantern featuring high-flux LED Technology

FEATURES:

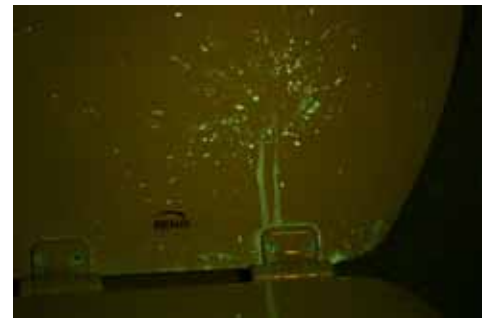
- Reliable solid-state UV emission from seven xLamp LEDs.
- *New!* 390-395nm peak emission, 2200mW total emission power.
- Rechargeable sealed lead acid battery.
- Charges from AC wall outlet (3' extension cord provided).
- Convenient On/Off trigger switch.
- Trigger switch locks for continuous operation.
- Includes LED charge indicator.
- 8.5" long x 4.5" wide.
- LED Lifetime 10,000 hours.
- Beam angle 15 degrees approximately.
- **Most powerful solid-state UV flashlight!**

APPLICATIONS:

- Inspection, laboratory, scientific, law enforcement where cordless high UV power is required.
- Scorpion hunting.
- Education in schools.
- Pet stain inspection.
- Carpet cleaning services (pet stains visible in less than ideal lighting conditions).



Upper toilet seat, missed by cleaning crew.



The Cary Company
Www.TheCaryCompany.com
(630) 376 2400



PART NUMBER
21BUVL

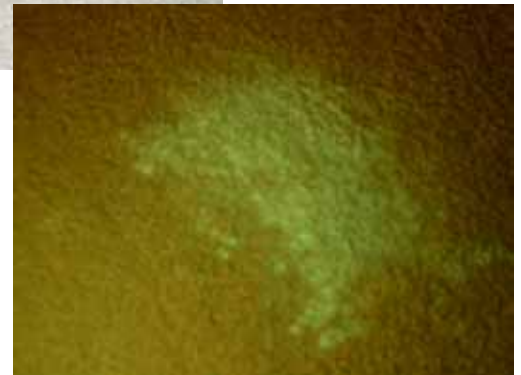
21BUVK

DESCRIPTION

390-395nm Ultraviolet Rechargeable Lantern with seven high-flux UV emitters.

Same as above, includes plastic carrying case and yellow viewing glasses

Ultraviolet Rechargeable Lantern featuring high-flux LED Technology



INSTRUCTIONS FOR USE:

- Charge for 12-14 hours before first use.
- Use standard AC two- or three-prong extension cord.
- If unit is not used for two months, typically 4 hours of charging will be required.
- Charging indicator lights red during charging, and flashes when charging is complete.
- Do not charge more than 24 hours.
- Do not operate the lantern during charging.
- Do not submerge in water — unit is splash-resistant, not waterproof.
- Do not dismantle head.
- Not a toy — keep out of reach of children!
- Yellow or orange viewing goggles must be worn.
- Battery is fully recyclable, and must be recycled in accordance with local and state guidelines.
- Glass lens can shatter if dropped, use caution.
- **WARNING:** This lantern is so powerful that most clear “UV Blocking” safety glasses will provide little or no protection (exception: clear goggles manufactured by NOIR-Laser block effectively). Use appropriate yellow or orange filtering glasses.

Pet stain in carpet viewed normally (top),
and under 395nm illumination (bottom).
Daytime conditions, blinds on windows
closed.

