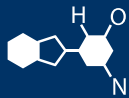


IF YOU...



MIX IT. FILL IT. PACK IT. SHIP IT.

WE HAVE A PRODUCT FOR YOU



Part #	19BX31
Gasket	Nitrile
Model	B-15-2-S2
Tank Depth	27.5" - 15 Gallon Drum
Opening Size	2" NPT
Rod Material	Stainless Steel
Bushings Material	Aluminum
Float Material	Stainless Steel
Calibration	Plastic Calibration

Barrel Gauge Stainless Level Two - Type B-S2

Calibration: Consists of 3 pieces. Outer plastic piece, inner plastic piece, and a piece of paper in between.

Red Lock Nut: HDPE Plastic.

Bushing:
Aluminum bushing, can be 2" or 1.5".

Stainless Float: 304 stainless for 1.5 or 2 inch openings.

.75 inch does not have this option.

Internal Rods: Stainless Steel 316

Part Number—
B-(Gallon Size)-(Size Opening)-(S2)
Sample—B-55-2-S2



What it is:

Top mounted liquid level gauge that can measure the level of Drums & Barrels. Comes in 55 Gallon, 30 Gallon, and 15 Gallon Models. Can accommodate 1.5" or 2" openings.

Stainless Floats will not fit thru the .75" opening size.

Additional Options:

Audible Alarm Accessory: This add on feature can turn your mechanical gauge into an audible Hi or Lo level alarm.

LED At-A-Glance Accessory: Another add on feature. This can give your mechanical gauge remote reading capability.

Gauge Guard: A cover that protects the exposed plastic components on top of the gauge.

Replacement Parts -

B-Kit - Replaces all of the gauge components from the red lock nut and up. Includes: Red HDPE Plastic Nut, Duro Nitrile Gasket, Plastic Cellulose acetate inner and outer calibration. (must state gallon size)

BG-Kit-ALN - Replaces all of the gauge components from the red lock nut and up with upgraded parts. Includes: Aluminum Lock Nut, Duro Nitrile Gasket, Plastic Cellulose acetate outer calibration, Glass inner calibration. (must state gallon size to order)

Instructions for Operation:

This gauge is a simple volume reading tool. The top of the red indicator is an indication of your approximate fuel level in your tank. Once installed, you simply view the calibration to monitor your tank level. Indicator is calibrated in eighths of a tank on one side, and quarters of a tank on the other.