

IF YOU...



MIX IT. FILL IT. PACK IT. SHIP IT.

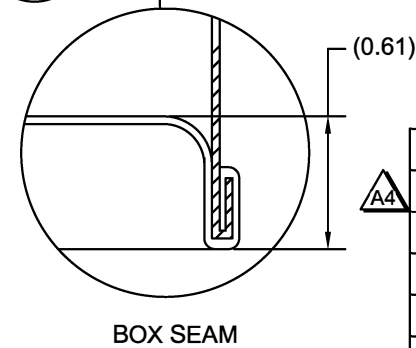
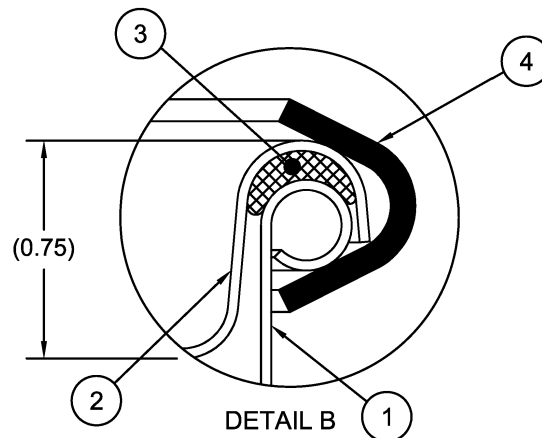
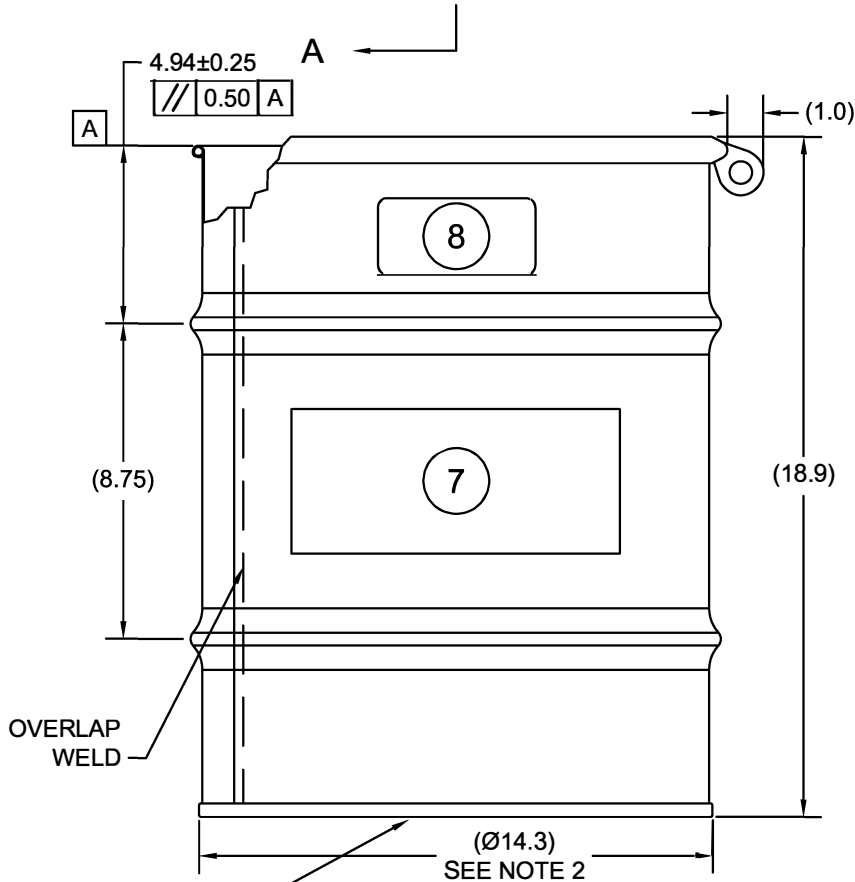
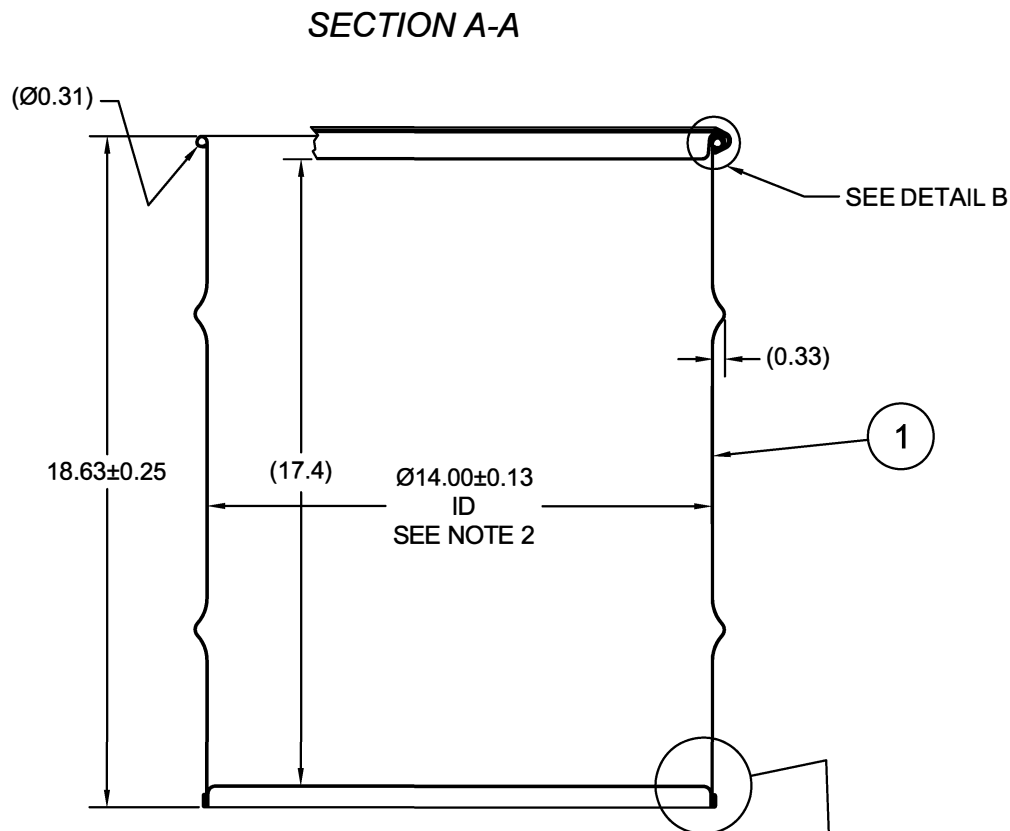
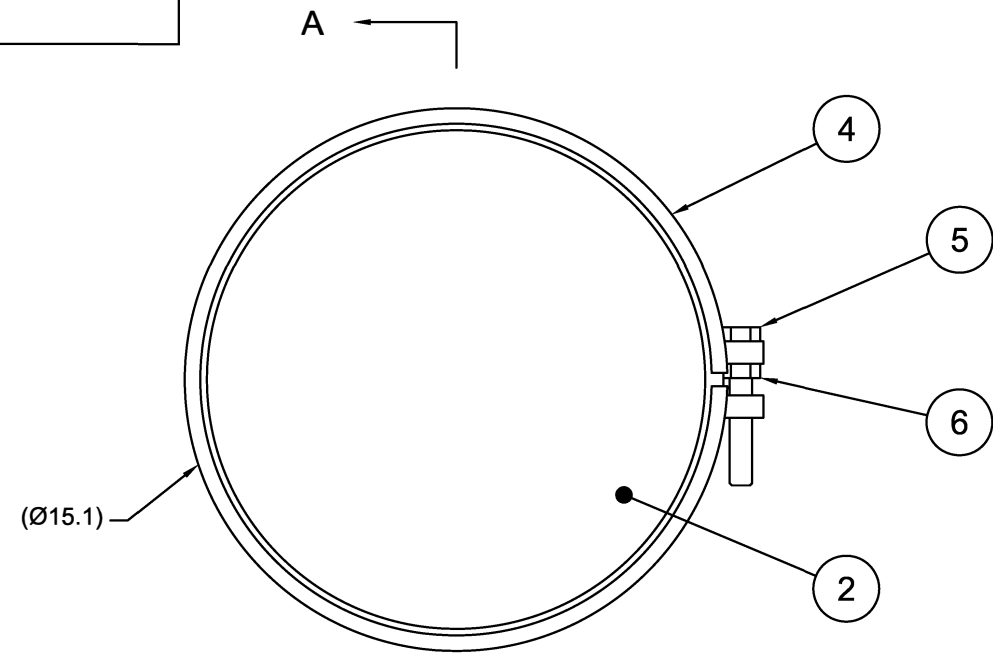
WE HAVE A PRODUCT FOR YOU



10 Gallon Steel Salvage Drum, Cover w/Bolt Ring Closure

Part #	26B10S
Capacity	10 gal.
Condition	New
Color	Yellow
Material	Carbon Steel
Closure	Cover w/ Bolt Ring Closure
Lining	Rust Inhibitor Enamel
Steel Thickness	0.9/0.9/0.9 (Top/Body/Bottom)
Steel Gauge	20/20/20 (Top/Body/Bottom)
Gasket	EPDM Rubber Gasket
Dimensions	14" Dia. x 17.4" H (inside) 14.3" Dia. x 18.9" H (outside)
Weight	15 lbs.
UN Rating Solid	UN1A2/X120/S

ECN # or INIT	REV	DESCRIPTION	DATE
OE-005	A1	REDRAWN TO AutoCAD	17-DEC-2012
OE-001	A2	CLERICAL ERROR	12-APR-2013
OE-013	A3	REVISED HOOP PROFILE	19-APR-2013
OE-018	A4	WAS MULTI-LINGUAL SALVAGE LOGO	14-OCT-2016



NOTES:

1. THESE DIMENSIONS REPRESENT DRUM AFTER BEING PROPERLY ASSEMBLED AND CLOSED PER CLOSING INSTRUCTIONS.
2. TO DETERMINE GREATER ACCURACY OF ANY DIAMETRIC DIMENSION, MEASURING OF CIRCUMFERENCE IS REQUIRED
3. CONSTRUCTION per 49 CFR §178.504 (b)

MATERIAL:

1. DRUM BODY AND COVER CRCQ CARBON STEEL PER ASTM A1008 AND ASTM A568
2. MATERIAL THICKNESS: DRUM 0.9mm (0.0319 - 0.0370, 20 GAUGE)
3. GASKET MAT'L PER ASTM D1056

FINISH:

1. COVER EXTERIOR PAINTED RED (LQ10017)
- BODY/BOTTOM EXTERIOR PAINTED YELLOW (LQ10024)

ITEM	P/N	DESCRIPTION	QTY
8		UN DURABLE LABEL	1
7	LS1000	LOGO SALVAGE DRUM	1
6	NT5800	5/8-11UNC HEX JAM NUT	1
5	BT5840	5/8-11UNC X 4in LONG HEX HEAD BOLT	1
4	RBH1413	BOLT RING (MOD A) 5-16G 13GA 5/8 LUG	1
3	GE0503-01	GASKET 3/8 DIA RD EPDM	1
2	P1409	COVER Ø14.00 ID	1
1		BODY/BOTTOM Ø14.00 ID DRUM	1

UN NUMBER EMBOSSED ON BOTTOM OF DRUM
 1/2" CHARACTERS READING:
 UN/1A2/X120/S/YR
 UN/1A2/Y1.8/150/YR
 0.9 *

TARE WEIGHT:
15 lbs

**APPROVAL
ON FILE**

FILE CREATED IN
AutoCAD

UNLESS STATED OTHERWISE

(DIMENSIONS IN PARENTHESIS ARE FOR
REFERENCE ONLY!!!)

ALL DIMENSIONS ARE IN INCHES
DO NOT SCALE DRAWING

TOLERANCES:
FRACTIONS ±1/4

X° ± 3°

X.X ± 0.2

X.XX ± 0.10

X.XXX ± 0.030

The
CARY COMPANY
Est. 1895

DESCRIPTION
10 GALLON OPEN HEAD DRUM
0.9 - 0.9 - 0.9 CRCQ STEEL
1A2/X120/S & 1A2/Y1.8/150

REL. DATE

PART NUM. / FILENAME

REV

A4