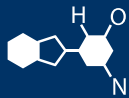


# IF YOU...



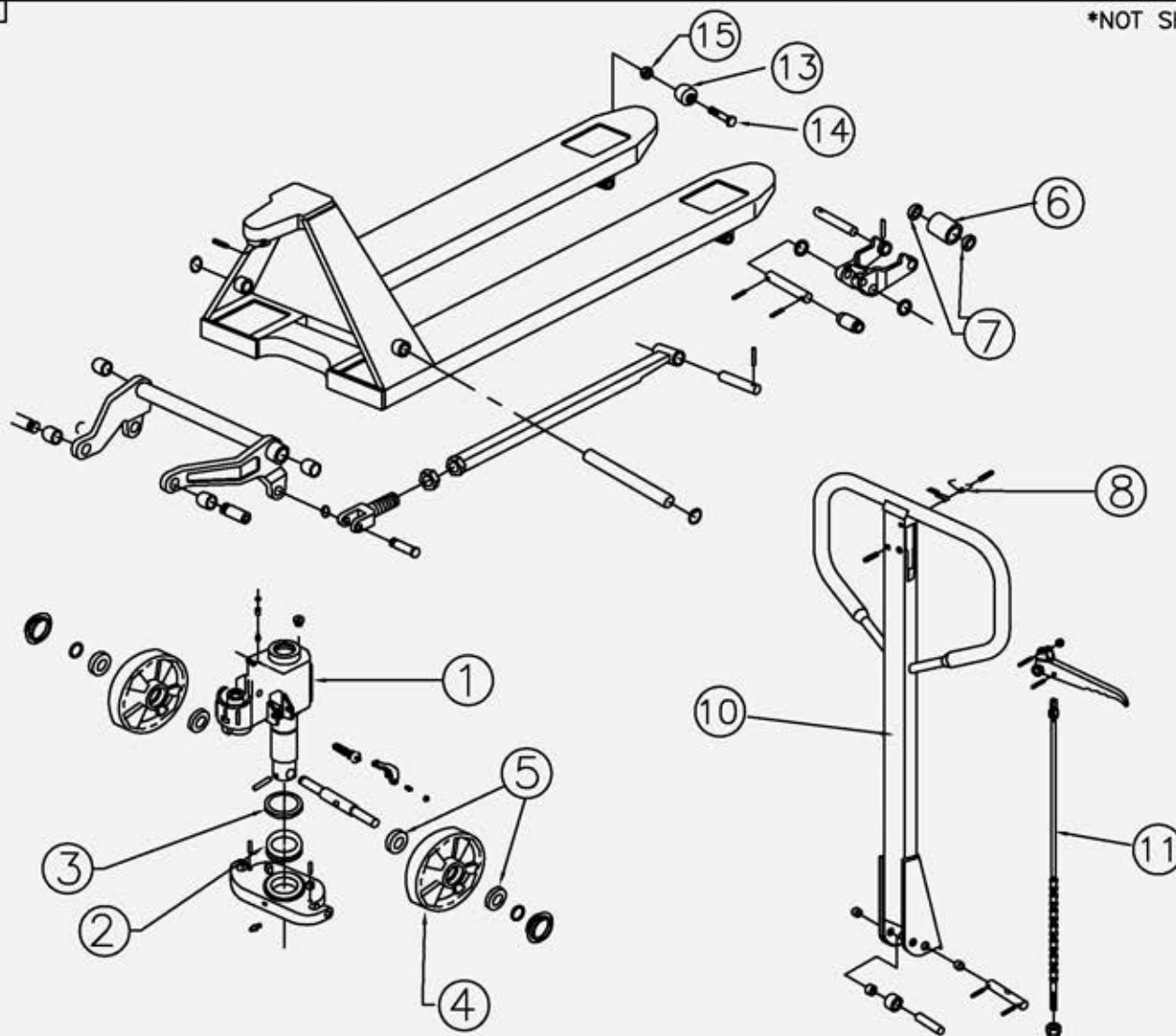
MIX IT. FILL IT. PACK IT. SHIP IT.

## WE HAVE A PRODUCT FOR YOU



Part #	26B152
Color	Silver
Material	Stainless Steel
Weight	172 lbs.
Load Capacity	4,400 lbs.
Fork Width & Length	27" x 48"
Raised Height	8"
Lowered Height	3"
Fork Width	6.25"

\*NOT SHOWN



## 272152 REPLACEMENT PARTS

ITEM	PART NO.	DESCRIPTION	QTY
1	272133	PUMP, REPL (NOBLELIFT)	1
2	272137	BEARING, THRUST PLATE	1
3	272138	BEARING COVER	1
4	273501	STEERING WHEEL	2
5	273502	BEARING, STEERING WHEEL	4
6	273503	WHEEL, LOAD	2
7	273504	BEARING, LOAD WHEEL	4
8	273505	SPRING	1
* 9	273506	SPRING	1
10	273507	HANDLE ASSEMBLY	1
11	273508	RELEASE ASSEMBLY	1
12	273524	SPRING CAP	1
13	272327	ENTRY ROLLER	2
14	272331	BOLT	2
15	272326	LOCK NUT	2
* 16	270059	STEEL BALL (PISTON ROD)	1
* 17	273558	PUMP CYLINDER	1

## STAINLESS STEEL PALLET JACK

- All parts are made of stainless.
- For use in food industry and areas where corrosive solutions are used.
- 1 year pump warranty.
- 6 1/4" wide forks.
- 7" nylon steering wheels.
- 3" nylon load wheels.
- Lowered fork height: 3.35"
- Raised fork height: 8"

Wheel: Nylon  
 Fork: 27" x 48"  
 Weight: 172 lbs  
 Capacity: 4,400 lbs

PRINT ISSUED

DEC 1, 2006

The  
**CARY COMPANY**  
 Est. 1995

STAINLESS STL. 27x48	REV. 11-22-06
PALLET TRUCK	
MADE IN THE U.S.A.	
1" = 2"	