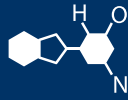


# IF YOU...



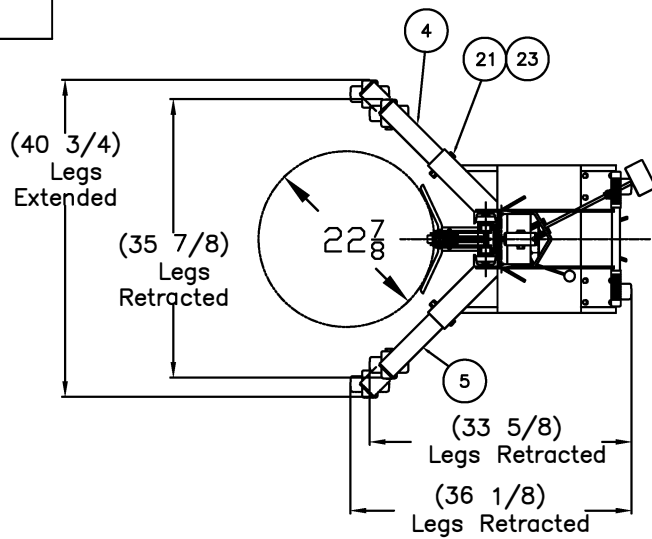
MIX IT. FILL IT. PACK IT. SHIP IT.

# WE HAVE A **PRODUCT** FOR YOU

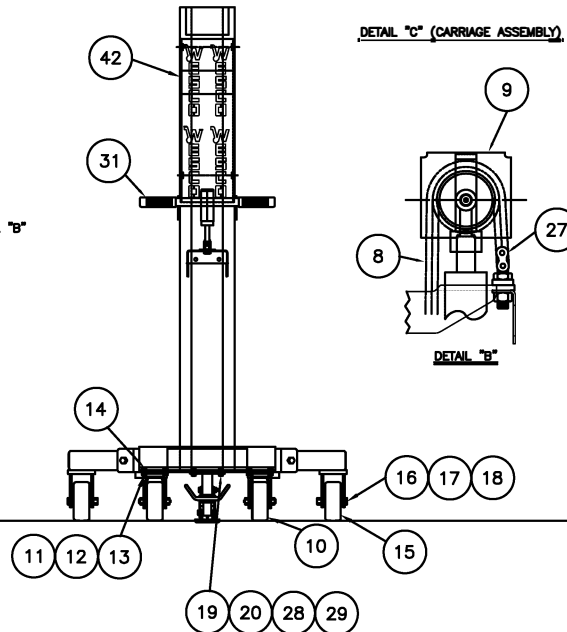
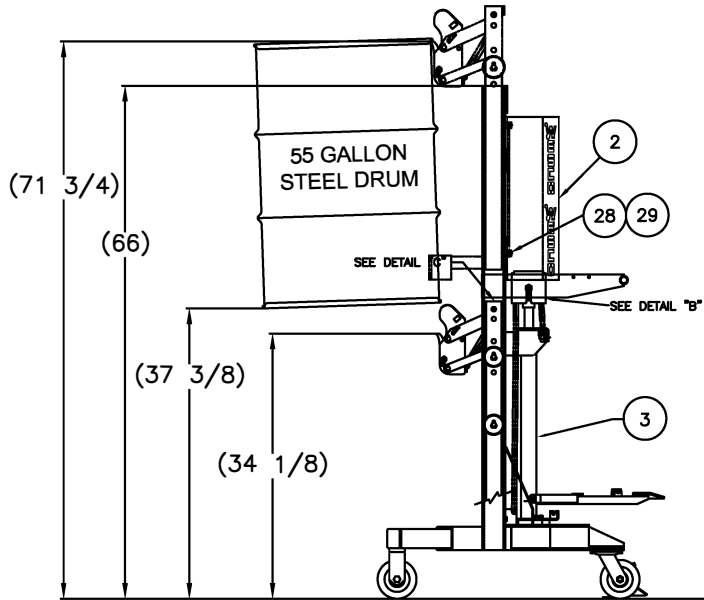
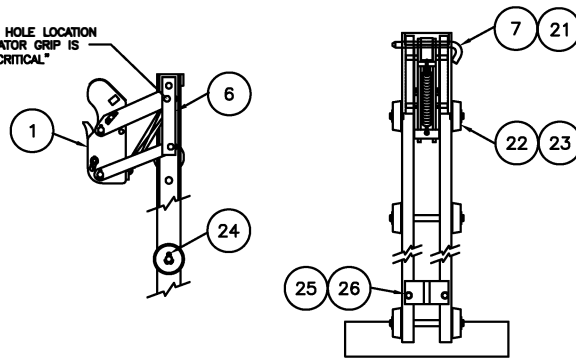


## 30 - 85 Gallon Ergonomic High Reach Drum Handler (1-Drum)

Part #	26B154
Capacity	1-Drum Unit
Color	Red
Material	Steel
Dimensions	40"L x 41"W x 66"H
Pallet Pack	1 ea.
Country of Manufacture	United States
Model	DM-1100-HR
Weight	376 lbs.
Load Capacity	1,100 lbs.



SLIDE HOLE LOCATION ON GATOR GRIP IS "CRITICAL"



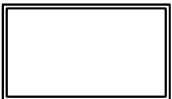
BILL OF MATERIAL			
ITEM	PART NO.	DESCRIPTION	QTY.
1	055079	GATOR GRIP JAW ASSEMBLY	1
2	054923	GUARD ASSEMBLY	1
3	055016	HYDRAULIC JACK ASSEMBLY	1
4	055007	OUTRIGGER WELDMENT-RH	1
5	055008	OUTRIGGER WELDMENT-LH	1
6	055286	SLIDE, GATOR GRIP	2
7	055063	ADJUSTMENT PIN	1
8	055068	LIFT CHAIN (31 7/8" LG)	1
9	051618	CHAIN ROLLER GUARD	1
10	054267	SWIVEL CASTER ASSEMBLY	2
11	108175	HEX NUT (5/16-18)	8
12	100170	LOCKWASHER (5/16)	8
13	100069	FLAT WASHER (5/16 SAE)	8
14	108149	HEX HD CAP SCR (5/16-18 X 1")	8
15	053769	WHEEL ASSEMBLY	2
16	108174	LOCK HEX NUT (1/2-13 2 WAY REV)	4
17	105311	SPANNER BUSHING	2
18	108161	HEX HD CAP SCR (1/2-13 X 3 1/2)	4
19	108427	FLAT WASHER (1/4 USS)	4
20	108169	1/4" LOCKWASHER	6
21	108944	CIRCLE COTTER PIN	1
22	108973	CARRIAGE ROLLER	6
23	108941	FLAT WASHER (1 OD X 1/2 ID)	12
24	108943	COTTER PIN (1/8 X 1")	6
25	100642	HEX NUT (3/8-16)	2
26	105080	SOC HD CAP SCR (3/8-16 X 1-1/4)	2
27	108502	CONNECTING LINK	2
28	108918	HEX HD CAP SCR 1/4-20,7/8L	4
29	492038	FLOOR LOCK ASSEMBLY	1

ERGONOMIC DRUM HANDLERS DM-1100-HR

- Ergonomic solution for lifting, transporting, weighing and placing drums on spill or standard pallets.
- Spring-loaded clamp holds any 3/16" or higher drum rim.
- (2) wheels and (2) swivel casters, .5" x 2" phenolic and floor lock.
- Handles most 30, 55 or 85 gallon drums - Steel, Fiber and Poly

P/N 240154  
 Model DM-1100-HR  
 Legs Retracted Capacity 650 lbs.  
 Legs Extended Capacity 1100 lbs.  
 Weight 376 lbs.

PRINT ISSUED



The **CARY** COMPANY  
 Est. 1895

REV.	EDN & DATE	APP	
REVISIONS			
PART NAME			DM-1100-HR DRUM MASTER (WESCO)
TOLERANCE UNLESS OTHERWISE SPECIFIED			
FRACTION		3 PLACE DECIMAL	2 PLACE DECIMAL
± 1/64	± .005	± .01	
ANGULAR ± 1-1/2'	SHEET 2	OF 2	
BREAK ALL SHARP EDGES AND REMOVE ALL BURRS			B-