

# IF YOU...



MIX IT. FILL IT. PACK IT. SHIP IT.

# WE HAVE A PRODUCT FOR YOU



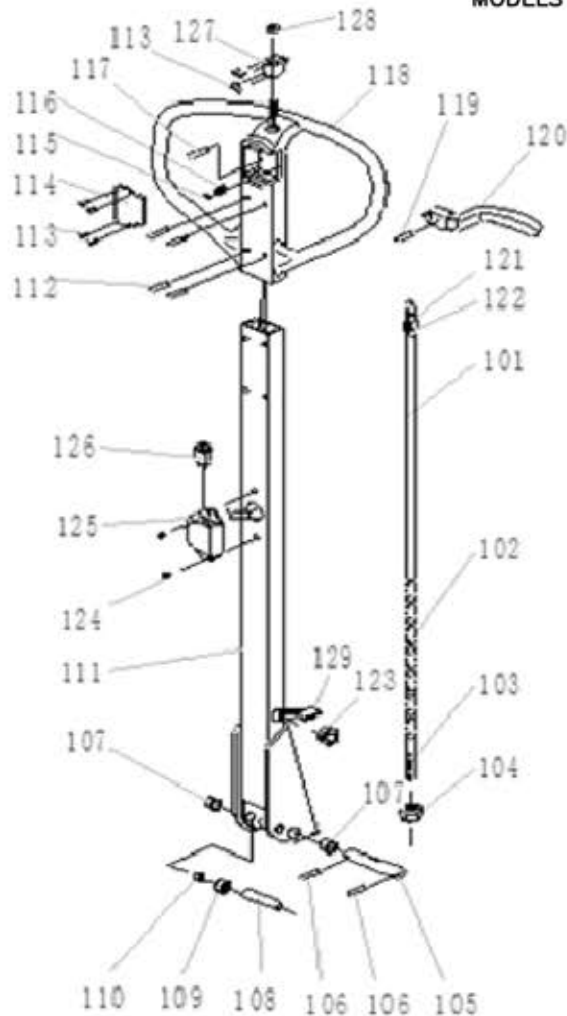
---

---

Part #	26B461
Color	Yellow
Material	Steel
Weight	372 lbs.
Load Capacity	2,200 lbs.
Fork Width & Length	27" x 45"
Raised Height	31"
Lowered Height	3.3"
Fork Width	6.5"



MODELS MANUFACTURED BEFORE 07/2008



### Electric High Lift

- 1 Year pump warranty.
- Non-Telescoping model.
- 12 volt battery charger included.
- 10-12 second lift time unloaded.
- Overload bypass.
- Polyurethane wheels.
- 180 degree steering radius.
- Comfort coated handles.
- 6.5" wide forks.
- 6" moldon polyurethane steering wheels.
- 3" moldon polyurethane load wheels.

### Specs

- Capacity: 2,200 lbs
- Fork length: 45"
- Fork seperation: 27"
- Fork width: 6.5"
- Overall length: 60"
- Lowered/Raised: 3.3"/31"
- Handle height: 48.5"
- Weight: 372 lbs

### NOTE:

Nobelift (Units Manufactured Before 2008) shown on Pages 1-4  
 I-Lift (Units Manufactured Before 2008) shown on Pages 5-6

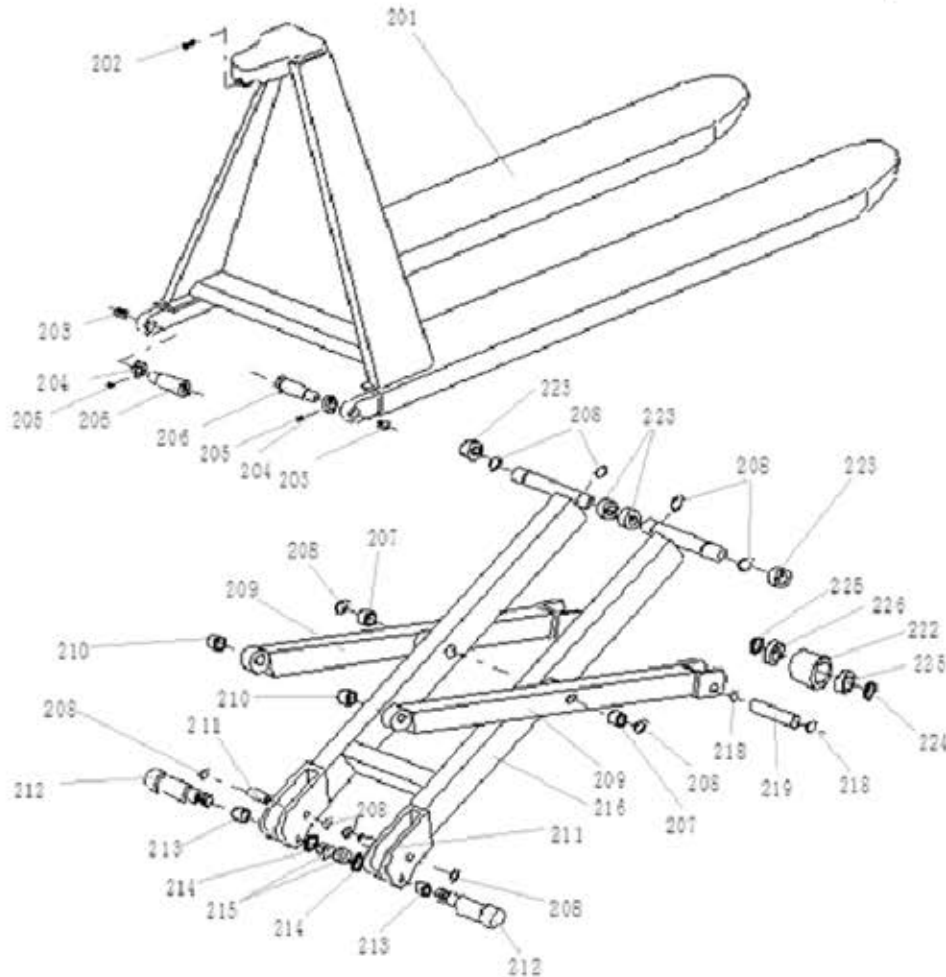
### REPLACEMENT PARTS LIST

ITEM	PART NO.	DESCRIPTION	QTY.
KIT	273057	HANDLE ASSEMBLY (INCLUDES ITEMS 101-129)	1
101		RELEASE ROD	1
102		CHAIN	1
103		ADJUSTING BOLT	1
104		ADJUSTING NUT	1
105		AXLE WITH HOLE	1
106		ELASTIC PIN	2
107		BUSHING	2
108		ROLLER PIN	1
109		PRESSURE ROLLER	1
110		BUSHING	1
111		DRAW-BAR	1
112		PIN	4
113		SCREW	4
114		COVER	1
115		BALL	1
116		SPRING	1
117		PIN	1
118		HANDLE	1
119		PIN	1
120		CONTROLLING HANDLE	1
121		PULL BOARD	1
122		PIN	1
123		RUBBER BAND	1
124		SCREW	2
125		SOCKET SWITCH	1
126		SWITCH	1
127		SOCKET BUTTON	1
128		BUTTON	1
129		CONNECTOR PLUG	1

The  
**CARY COMPANY**  
 Est. 1895

REV. EDN & DATE REVISIONS	APP	PART NAME		DRAWN:	
		Electric High Lift		CHECKED:	
		TOLERANCE UNLESS OTHERWISE SPECIFIED		APP. ENGR.	
		FRACTION	3 PLACE DECIMAL	2 PLACE DECIMAL	SCALE:
		± 1/64	± .005	± .01	
		ANGULAR ± 1-1/2"		SHEET 1 OF 6	REV
BREAK ALL SHARP EDGES AND REMOVE ALL BURRS					

MODELS MANUFACTURED BEFORE 07/2008



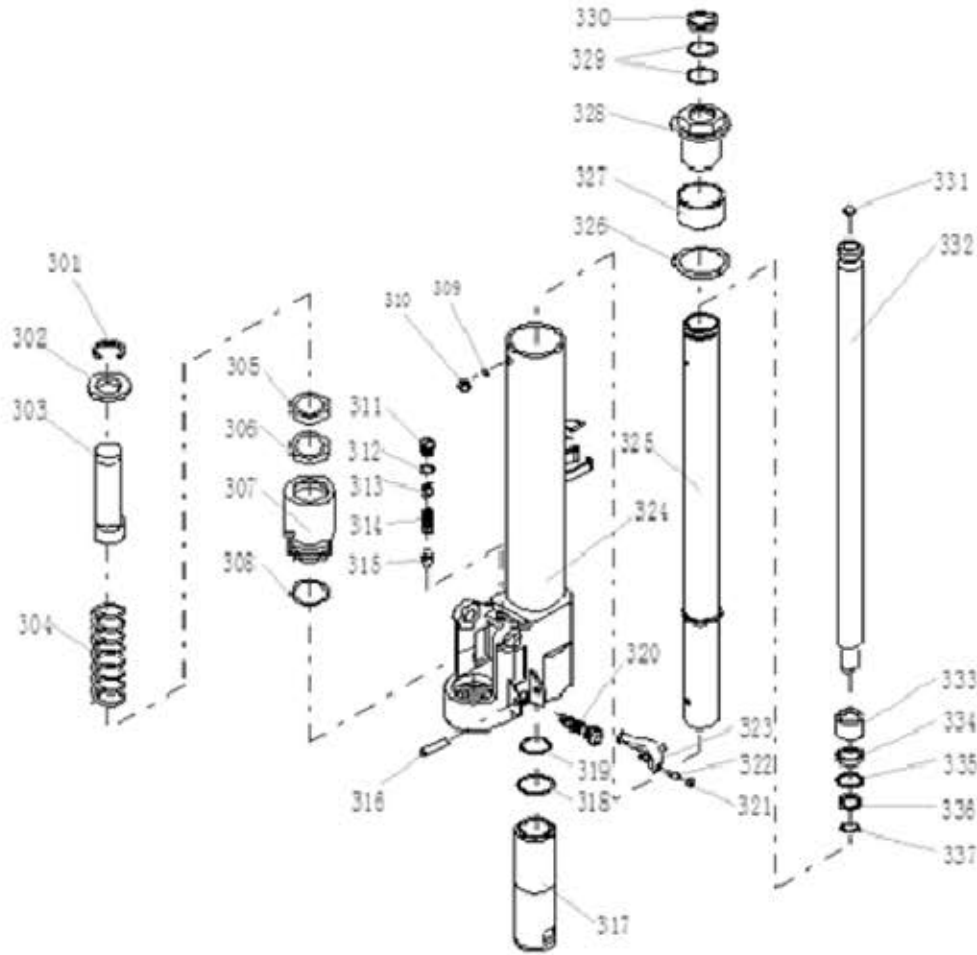
REPLACEMENT PARTS LIST

ITEM	PART NO.	DESCRIPTION	QTY.
201		FORK FRAME	1
202		BOLT	1
203		SCREW	2
204		GASKET	2
205		SCREW	2
206		PIN	2
207		BUSHING	2
208		ELASTIC COLLAR	10
209		LEFT LEG	2
210		BUSHING	2
211		PIN	2
212		CENTRIFUGAL AXLE	2
213		BUSHING	2
214		ELASTOMETRIC GASKET	2
215		NUT	2
216		INNER LEG	1
217			
218		ELASTIC COLLAR	4
219		SHAFT OF ROLLER	2
220			
221			
222	270093	ROLLER	2
223		STEEL ROLLER	4
224		GASKET	4
225	270092	BEARING	4

The  
**CARY COMPANY**  
Est. 1895

REV. EDN & DATE	APP	PART NAME		DRAWN:	
	REVISIONS	Electric High Lift		CHECKED:	
		TOLERANCE UNLESS OTHERWISE SPECIFIED		APP. ENGR.	
		FRACTION	3 PLACE DECIMAL	2 PLACE DECIMAL	SCALE:
		± 1/64	± .005	± .01	
		ANGULAR ± 1-1/2°	SHEET 2 OF 6		REV
		BREAK ALL SHARP EDGES AND REMOVE ALL BURRS			

MODELS MANUFACTURED BEFORE 07/2008



REPLACEMENT PARTS LIST

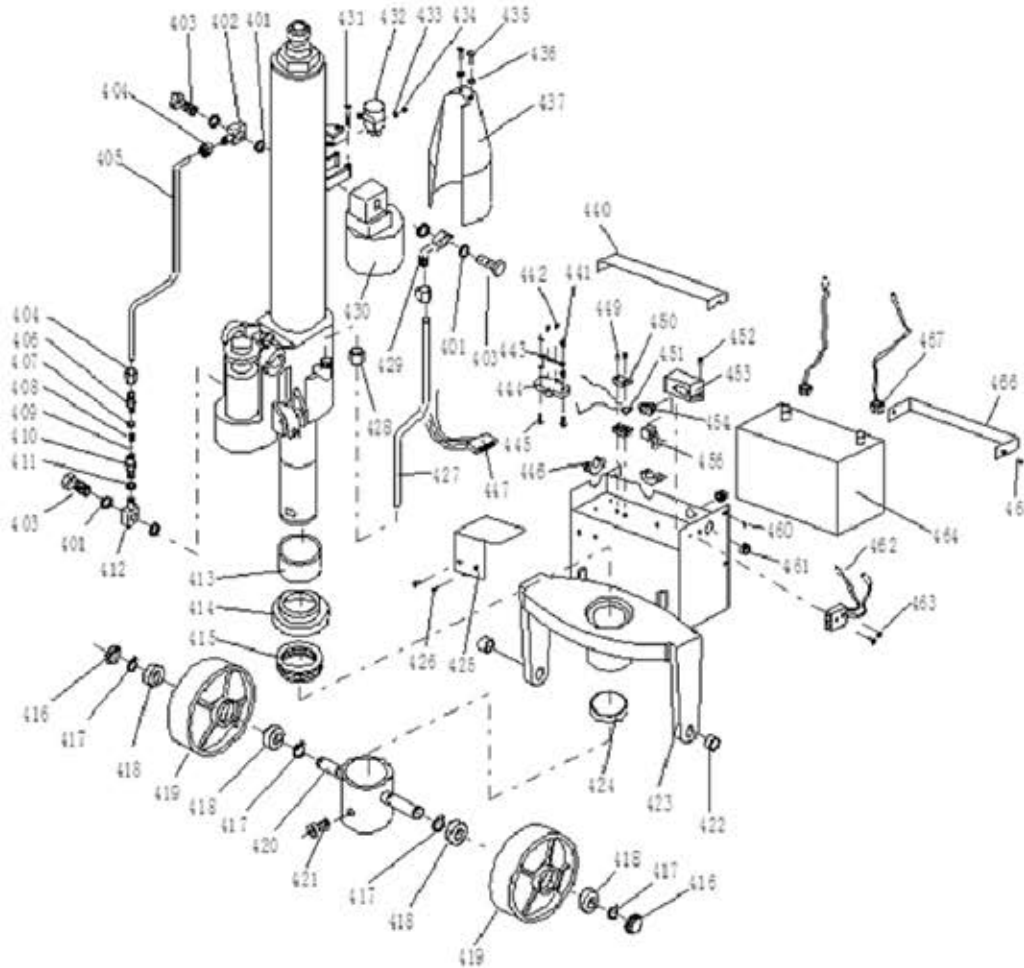
ITEM	PART NO.	DESCRIPTION	QTY.
KIT	272471	COMPLETE REPLCT PUMP (1-LIFT)	1
KIT	272479	COMPLETE REPLCT PUMP (MOBLEIFT)	1
301		LOCKING RING	1
302		GASKET FOR SPRING	1
303		PISTON	1
304		SPRING	1
305		DUST RING	1
306		Y-RING	1
307		PUMP CYLINDER	1
308		O-RING	1
309		SEAL GASKET	1
310		SCREW PLUG	1
311		SCREW PLUG	1
312		O-RING	1
313		ADJUSTING BOLT	1
314		SPRING	1
315		SPINDLE OF SAFETY VALVE	1
316		ELASTIC PIN	1
317		LOWER CYLINDER	1
318		O-RING	1
319		O-RING	1
320		VALVE CARTRIDGE	1
321		NUT	1
322		SCREW	1
323		LEVER PLATE	1
324		PUMP BODY	1
325		CYLINDER	1
326		SEAL GASKET	1
327		BUSHING	1
328		SCREW COVER	1
329		O-RING	1
330		DUST RING	1
331		STEEL BALL	1
332		PISTON ROD	1
333		PISTON	1
334		CUP PACKING	1
335		O-RING	1
336		GASKET	1
337		ELASTIC COLLAR	1

The  
**CARY COMPANY**  
Est. 1895

REV.	EDN & DATE	APP.	PART NAME		DRAWN:
	REVISIONS	Electric High Lift		CHECKED:	APP. ENGR.
	TOLERANCE UNLESS OTHERWISE SPECIFIED				SCALE:
	FRACTION		3 PLACE DECIMAL	2 PLACE DECIMAL	
± 1/64		± .005	± .01		
ANGULAR ± 1-1/2°		SHEET 3 OF 6		REV	
BREAK ALL SHARP EDGES AND REMOVE ALL BURRS					



MODELS MANUFACTURED BEFORE 07/2008



REPLACEMENT PARTS LIST

ITEM	PART NO.	DESCRIPTION	QTY.
401		SEAL GASKET	6
402		CONNECTOR	1
403		BOLT	3
404		NUT	2
405		OIL PIPE	1
406		CARVE TIE-IN	1
407		SEAL GASKET	1
408		SPRING	1
409		STEEL BALL	1
410		SEAT OF VALVE	1
411		SEAL GASKET	1
412		CONNECTOR	1
413	272500	BUSHING	1
414		SEAT OF BEARING	1
415		BEARING	1
416	272497	DUST COVER	2
417	272498	ELASTIC COLLAR	4
418	272499	BEARING	4
419	272501	WHEEL	4
420		HOLDING SITE FOR WHEEL	1
421		BOLT	1
422		BUSHING	2
423		THRUST PLATE	1
424		BUSHING	1
425		COVER	1
426		SCREW	2
427		OIL PIPE	1
428		NUT	2
429		CONNECTOR	1
430		MOTOR ASSEMBLY	1
431		BOLT	2
432		ELECTROMAGNETIC SWITCH	1
433		GASKET	2
434		NUT	2

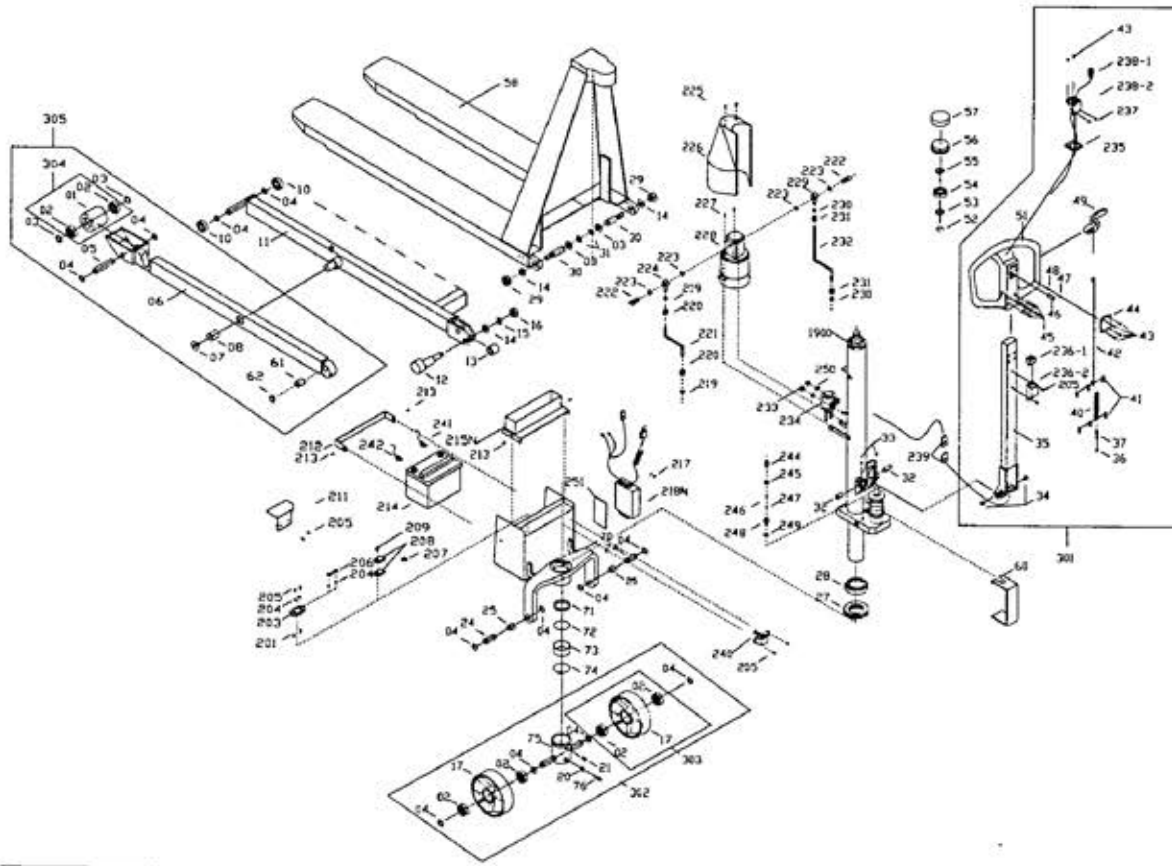
REPLACEMENT PARTS LIST

ITEM	PART NO.	DESCRIPTION	QTY.
435		SCREW	2
436		GASKET	2
437		MOTOR COVER	1
438			
439			
440		BATTERY COVER	1
441		NUT	4
442		SCREW	2
443		FUSE	1
444		FUSE CARRIER	1
445		BOLT	2
446		RUBBERBAND	2
447		CONNECTOR PLUG	1
448			
449		SCREW	2
450		FUSE CARRIER	2
451		FUSE	1
452		SCREW	2
453		SEAT OF VOLTAGE METER	1
454		VOLTAGE METER	1
455			
456		CIRCUIT MODULE	1
457			
458			
459			
460		SCREW	2
461		RUBBERBAND	2
462		SOCKET	1
463		SCREW	2
464	109102	BATTERY	1
465		SCREW	2
466		BAFFLE	1
467		BATTERY WIRES	2
	272472	CHARGER	1

The  
**CARY COMPANY**  
Est. 1895

REV.	EDN & DATE	REVISIONS	PART NAME		DRAWN:
			Electric High Lift		CHECKED:
			TOLERANCE UNLESS OTHERWISE SPECIFIED		APP. ENGR.
			FRACTION	3 PLACE DECIMAL	2 PLACE DECIMAL
	± 1/64	± .005	± .01		
	ANGULAR ± 1-1/2°	SHEET 4 OF 6		REV	
BREAK ALL SHARP EDGES AND REMOVE ALL BURRS					

MODELS MANUFACTURED AFTER 07/2008



REPLACEMENT PARTS LIST			
ITEM	PART NO.	DESCRIPTION	QTY.
01	273728	FRONT WHEEL	2
02	272488	BALL BEARING	8
03		WASHER	6
04		SNAP RING	18
05		PIN	2
06		LEG	2
07	273658	SCREW	2
08		BUSH	2
10		BALL BEARING	4
11		LEG	1
12		CENTRIFUGAL AXLE	2
13		BUSH	2
14		WASHER	4
15		BUSH	2
18		NUT	2
17	272488	STEERING WHEEL	2
19		SCREW	2
20		NUT	1
21		SCREW	1
24		PIN	2
25		BUSH	2
27		BALL BEARING	1
28		SPACER	1
29		NUT	2
30		PIN	2
31		SNAP RING	2
32		PIN	2
33		SCREW	2
34		BUSH	2
35		HANDLE TUBE	1
36		NUT	3
37		EYE BOLT	1
40		CHAIN	1
41		CHAIN CONNECTOR	2
42		RELEASE ROD	1
43		SCREW	6
44		COVER	1
45		PIN	6
46		PIN	1
47		BALL	1
48		SPRING	1
48		RELEASE LEVER	1
51		HANDLE	1
52		RETAINING RING	1
53		WASHER	1
54		BALL BEARING	1
55		SNAP RING	1
56		SPACER	1
57		SPACER	1
58		FORK	1
60		HOOING PLATE	1
61		SPACER	2
62		SPACER	2
70		HOLD YOKE	1
71		BUSH	1
72		SNAP RING	1
73		BALL BEARING	1
74		BALL	42
75		WHEEL YOKE	1
78		SCREW	1
201		SCREW	2
203		FUSE BOX	1
204		NUT	4
205		SCREW	9
206		FUSE (160A)	1
207		FUSE (5A)	1
208		FUSE BOX	2
209		SCREW	4
211		COVER	1
212		PLATE	1
213		SCREW	4
214		BATTERY	1
215H		COVER	1
217		SCREW	1
218H	272599	RECHARGER	1
219		SPACER	2
220		NUT	2
221		OIL PIPE	1
222		SCREW	2
223		WASHER	4
224		ADJUSTING SCREW	1
225		SCREW	2
228		COVER	1
227		SCREW	2
228		PUMP	1
229		ADJUSTING SCREW	1
230	273655	SPACER	2
231	273656	NUT	2
232	273657	OIL PIPE	1
234		RELAY	1
235		WASHER	1
236-1		SWITCH	1
236-2		SWITCH BASE	1
237		SCREW	2
238-1		UP SWITCH	1
238-2		UP SWITCH BASE	1
239		SOCKET	1
240		VOLTAPE METER	1
241		BATTERY TERMINAL (-)	1
242		BATTERY TERMINAL (+)	1
244		ADJUSTING SCREW	1
245		WASHER	1
246		BALL	1
247		SPRING	1
248		ADJUSTING SCREW	1
249		WASHER	1
251		PLATE	1

REPLACEMENT PARTS LIST			
ITEM	PART NO.	DESCRIPTION	QTY.
70		HOLD YOKE	1
71		BUSH	1
72		SNAP RING	1
73		BALL BEARING	1
74		BALL	42
75		WHEEL YOKE	1
78		SCREW	1
201		SCREW	2
203		FUSE BOX	1
204		NUT	4
205		SCREW	9
206		FUSE (160A)	1
207		FUSE (5A)	1
208		FUSE BOX	2
209		SCREW	4
211		COVER	1
212		PLATE	1
213		SCREW	4
214		BATTERY	1
215H		COVER	1
217		SCREW	1
218H	272599	RECHARGER	1
219		SPACER	2
220		NUT	2
221		OIL PIPE	1
222		SCREW	2
223		WASHER	4
224		ADJUSTING SCREW	1
225		SCREW	2
228		COVER	1
227		SCREW	2
228		PUMP	1
229		ADJUSTING SCREW	1
230	273655	SPACER	2
231	273656	NUT	2
232	273657	OIL PIPE	1
234		RELAY	1
235		WASHER	1
236-1		SWITCH	1
236-2		SWITCH BASE	1
237		SCREW	2
238-1		UP SWITCH	1
238-2		UP SWITCH BASE	1
239		SOCKET	1
240		VOLTAPE METER	1
241		BATTERY TERMINAL (-)	1
242		BATTERY TERMINAL (+)	1
244		ADJUSTING SCREW	1
245		WASHER	1
246		BALL	1
247		SPRING	1
248		ADJUSTING SCREW	1
249		WASHER	1
251		PLATE	1

REPLACEMENT ASSEMBLY LIST

ITEM	PART NO.	DESCRIPTION	QTY.
301	273861	HANDLE ASSEMBLY (INCLUDES ITEMS #34, 35, 36, 37, 40, 41, 42, 43, 44, 45, 46, 47, 48, 49, 51, 236-1, 236-2, 205, 237, 238-1 & 238-2)	1
302		WHEEL YOKE ASSEMBLY (INCLUDES ITEMS #02, 04, 17, 20, 75 & 78)	1
303		WHEEL ASSEMBLY (INCLUDES ITEMS #02 & 17)	2
304		FRONT WHEEL ASSEMBLY (INCLUDES ITEMS #01 & 02)	2
305		LEG ASSEMBLY (INCLUDES ITEMS #01, 02, 03, 04, 05, 06, 07, 08, 61 & 62)	2

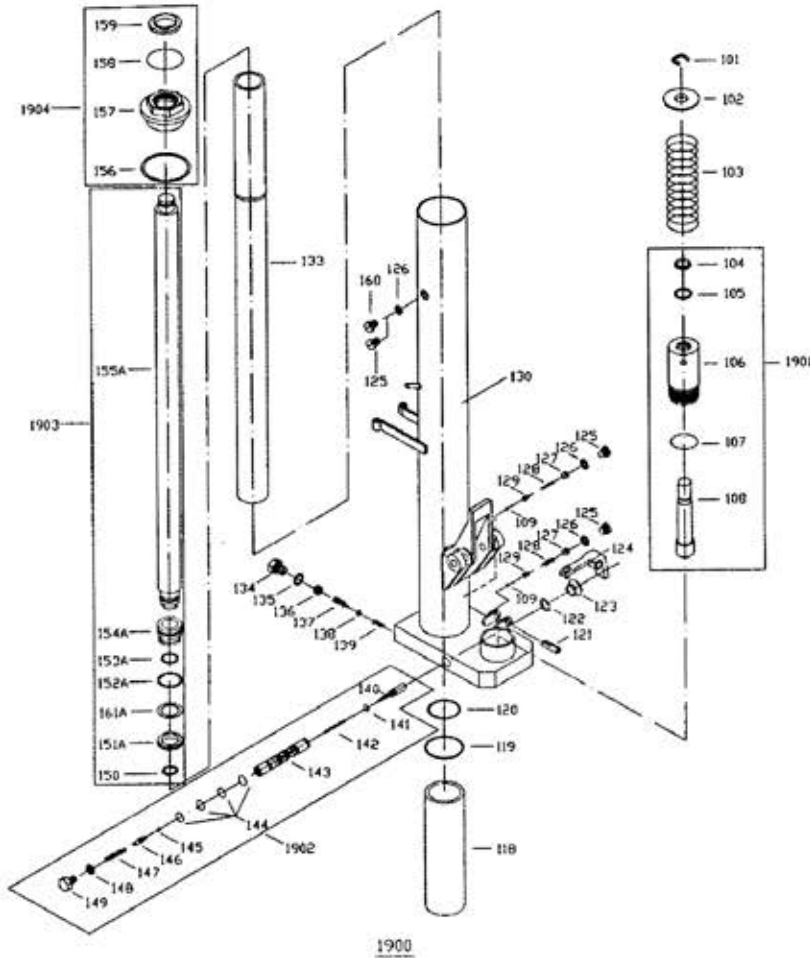
The  
**CARY COMPANY**  
Est. 1895

REV. EDN & DATE APP REVISIONS

PART NAME		DRAWN:
Electric High Lift		CHECKED:
TOLERANCE UNLESS OTHERWISE SPECIFIED		APP. ENGR.
FRACTION	3 PLACE DECIMAL	2 PLACE DECIMAL
± 1/64	± .005	± .01
ANGULAR ± 1-1/2'	SHEET 5 OF 6	SCALE:
BREAK ALL SHARP EDGES AND REMOVE ALL BURRS		REV

272461

MODELS MANUFACTURED AFTER 07/2008



REPLACEMENT PARTS LIST			
ITEM	PART NO.	DESCRIPTION	QTY.
101		RETAINING RING	1
102		SPRING SEAT	1
103		SPRING	1
104		WIPER	1
105		Y-RING	1
106		PUMP	1
107		O-RING	1
108		PLUNGER	1
109		BALL	2
118		CYLINDER BUSH	1
119		O-RING	1
120		O-RING	1
121		SNAP RING	1
122		SPLIT RING	1
123		RUBBER SLEEVE	1
124		PENDULUM SLEEVE	1
125		SCREW	2
126		O-RING	3
127		SCREW	2
128		SPRING	2
129		BALL SEAT	2
130		PUMP HOUSING	1
133		CYLINDER	1
134		SCREW	1
135		SEAL RING	1
136		SCREW	1

REPLACEMENT PARTS LIST			
ITEM	PART NO.	DESCRIPTION	QTY.
137		SCREW	1
138		PLATE	1
139		SPRING	1
140		RELEASE INDICATOR	1
141		O-RING	1
142		SPRING	1
143		VALVE INSERT	1
144		O-RING	4
145		BALL	1
146		RELEASE VALVE	1
147		SPRING	1
148		SEAL RING	1
149		SCREW	1
150		SNAP RING	1
151A		Y-RING	1
152A		O-RING	1
153A		O-RING	1
154A		PISTON	1
155A		PISTON ROD	1
156		SEAL RING	1
157		CYLINDER NUT	1
158		O-RING	1
159		SCRAPER RING	1
160		SCREW	1
161A		RETAINING RING	1

REPLACEMENT ASSEMBLY LIST

1901	PUMP ASSEMBLY (INCLUDES ITEMS #104, 105, 106, 107 & 108)	1
1902	VALVE INSERT ASSEMBLY (INCLUDES ITEMS #140, 141, 142, 143, 144, 145, 146, 147, 148 & 149)	2
1903	PISTON ROD ASSEMBLY (INCLUDES ITEMS #150, 151A, 152A, 153A, 154A, 155A & 161A)	2
1904	CYLINDER NUT ASSEMBLY (INCLUDES ITEMS #156, 157, 158 & 159)	2
272471	COMPLETE REPLACEMENT PUMP (NOBLELIFT)	2

THIS DRAWING IN ALL PARTICULARS IS WESCO INDUSTRIAL PRODUCTS INC. PROPERTY. ALL RIGHTS OF DESIGN, INVENTION OR USE OF ARE RESERVED.

REV. EDN & DATE	<b>WESCO INDUSTRIAL PRODUCTS INC.</b>		NORTH WALES PENNA. 19454	
	PART NAME		DRAWING	
	Electric High Lift		CHECKED:	
	TOLERANCE UNLESS OTHERWISE SPECIFIED		APP. ENGR.	
FRACTION 3 PLACE DECIMAL 2 PLACE DECIMAL		SCALE:		
± 1/64 ± .005 ± .01		B- 272461		
ANGULAR ± 1-1/2" SHEET 6 OF 6				
BREAK ALL SHARP EDGES AND REMOVE ALL BURRS				REV