

IF YOU...



MIX IT. FILL IT. PACK IT. SHIP IT.

WE HAVE A PRODUCT FOR YOU



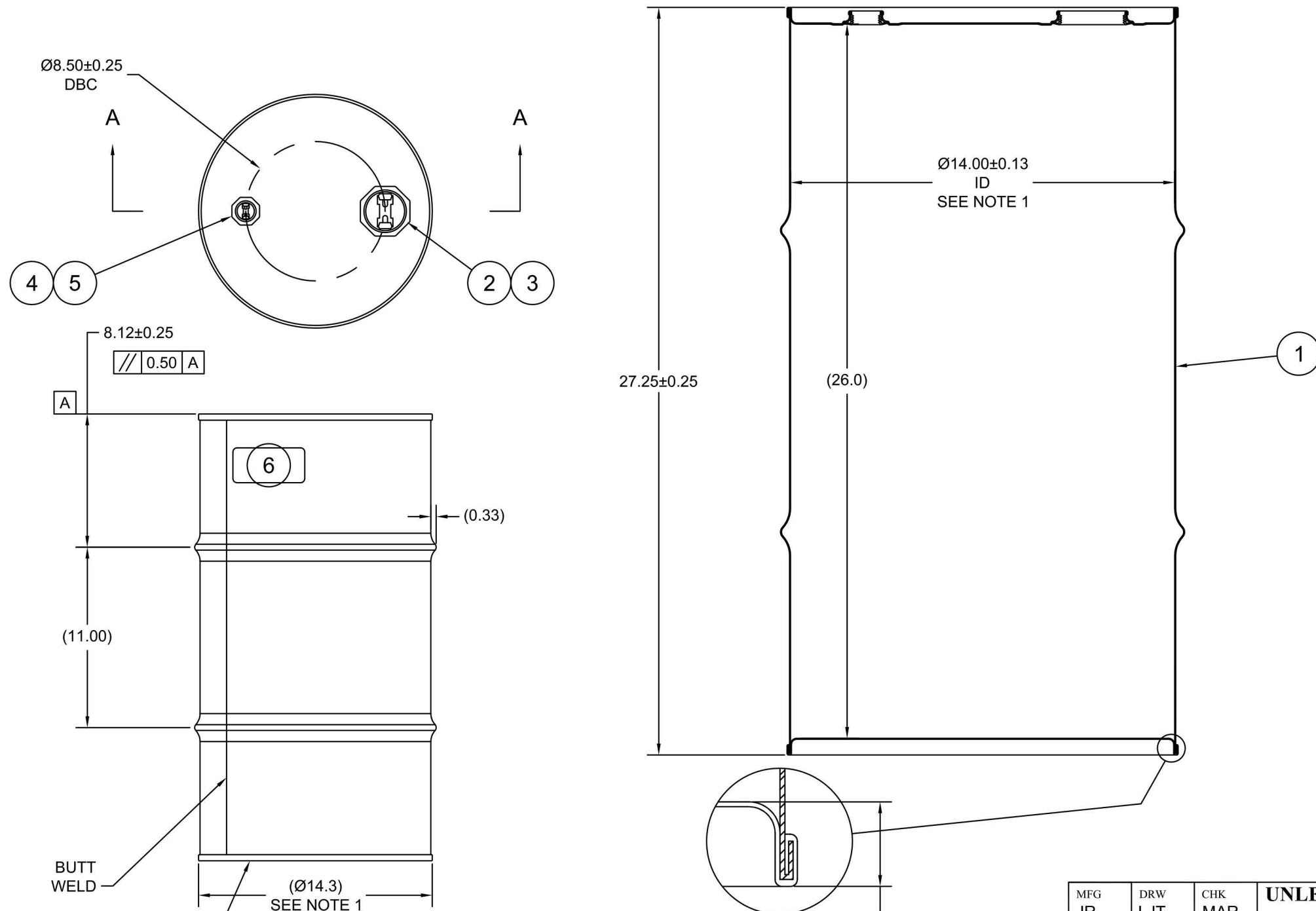
16 Gallon Tight head Stainless Steel Drum, UN Rated, 2" x 3/4" Fittings

Product Category: Tight Head Stainless Steel Drums

Part #	26B6SS
Capacity	16 Gal.
Condition	New
Color	Stainless Steel
Material	304-2B
Closure	Tight Head
Steel Thickness	0.9/0.9/0.9 (Top/Body/Bottom)
Steel Gauge	20/20/20 (Top/Body/Bottom)
Fittings	2"NPT & 3/4"NPT Fittings
Gasket	Buna Gasket
Dimensions	14"Dia. x 26"H (inside) 14.3" Dia. x 27.25" (outside)
Pallet Pack	15 ea.
UN Rating Liquid	UN1A1/X1.2/250

ECN # or INIT	REV	DESCRIPTION	DATE
OE-005	A1	REDRAWN TO AutoCAD	04-DEC-2009
OE-001	A2	CLERICAL ERROR	16-APR-2013
OE-013	A3	REVISED HOOP PROFILE	22-APR-2013

SECTION A-A
(SHOWN W/ PLUGS REMOVED)



NOTES:

1. TO DETERMINE GREATER ACCURACY OF ANY DIAMETRIC DIMENSION, MEASURING OF CIRCUMFERENCE IS REQUIRED
2. CONSTRUCTION per 49 CFR § 178.504 (b)

MATERIAL:

1. 304SS PER ASTM A240 OR EQUIVALENT
2. MATERIAL THICKNESS: 0.9mm (0.0319 - 0.0370; 20 GAUGE)

FINISH:

1. PASSIVATED INNER AND OUTER SURFACE OF BODY WELD SEAM

ITEM	P/N	DESCRIPTION	QTY
6		UN DURABLE LABEL	1
5	PT3050	PLUG 3/4 TS 316SS BUNA GASKET	1
4	FT3050	FLANGE 3/4 TS 316SS BUNA GASKET	1
3	PT2050	PLUG 2 TS 316SS BUNA GASKET	1
2	FT2050	FLANGE 2 TS 316SS BUNA GASKET	1
1		BODY/BOTTOM 16 GALLON DRUM 14.0 ID	1

UN NUMBER EMBOSSED ON BOTTOM OF DRUM
1/2" CHARACTERS READING:
UN/1A1/X1.2/250/YR

0.9 * 304

(YR = YEAR OF MANUFACTURE)

TARE WEIGHT:
17 lbs

MFG JR	DRW LJT	CHK MAR
SLS DR	QA MD	
MG Bora Rasic		
FILE CREATED IN AutoCAD 2002		

UNLESS STATED OTHERWISE
(DIMENSIONS IN PARENTHESIS ARE FOR REFERENCE ONLY!!!)
ALL DIMENSIONS ARE IN INCHES
DO NOT SCALE DRAWING
TOLERANCES:
FRACTIONS ±1/4
X° ± 3°
X.X ± 0.2
X.XX ± 0.10
X.XXX ± 0.030

The **CARY COMPANY**
Est. 1895

DESCRIPTION
16 GALLON TIGHT HEAD DRUM
0.9 - 0.9 - 0.9 304SS STEEL
1A1/X1.2/250

REL. DATE
04-DEC-2009

PART NUM. / FILENAME

REV
A3