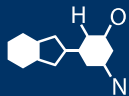


IF YOU...



MIX IT. FILL IT. PACK IT. SHIP IT.

WE HAVE A PRODUCT FOR YOU



Part #	26B950
Color	Yellow
Material	Steel
Weight	392 lbs.
Load Capacity	2,200 lbs.
Fork Width & Length	21.5" x 31"
Raised Height	11"
Lowered Height	3.25"
Fork Width	6.5"





Ergonomic Pallet Tilter

- 1 year pump warranty.
- Capacity: 2200 lbs
- 5" polyurethane swivel casters.
- 3" polyurethane load wheels.
- Handle height: 44.25"
- Load center: min. 7.5" / max. 15.5"
- Lifting range with forks in horizontal position: 3.25" to 11".
- Forks tilt up to 90 degrees for accurate load positioning.
- Lifting range with back rest in horizontal position: 29 to 37".

Specs

- Capacity: 2,200 lbs
- Fork length: 31"
- Fork separation: 21.5"
- Fork width: 6.5"
- Overall length: 51.67"
- Lowered/Raised: 3.25"/37"
- Weight: 393 lbs

Replacement parts

- Hydraulic Jack: P/N 172161
- Handle: P/N 172171
- Large steering wheel: P/N 172166
- Small steering wheel: P/N 172167

The
CARY COMPANY
 Est. 1895

REV. & DATE	PART NAME		DRAWN:	
	Ergonomic Pallet Tilter		CHECKED:	
	TOLERANCE UNLESS OTHERWISE SPECIFIED		APP. ENGR.	
	FRACTION 3 PLACE DECIMAL 2 PLACE DECIMAL		SCALE:	
	± 1/64	± .005	± .01	
	ANGULAR ± 1-1/2'	SHEET 1	OF 1	REV
BREAK ALL SHARP EDGES AND REMOVE ALL BURRS				