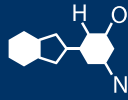


# IF YOU...



MIX IT. FILL IT. PACK IT. SHIP IT.

# WE HAVE A PRODUCT FOR YOU

Part #: 26BC2A


New IBC Totes

275 Gallon IBC Tote, Anti-Static, New, UN Rated,  
2" Camlock Valve, Composite Pallet



The  
**CARY**COMPANY  
Est. 1895

1195 W. Fullerton Ave. | Addison, IL 60101 | T: 630.629.6600 | F: 630.629.3690 | [TheCaryCompany.com](http://TheCaryCompany.com)

<b>Specification:</b> SM275C10V229 <b>Date:</b> 7/27/2022		<b>Created by:</b> mfm
	<b>Material of Construction</b>	Inner container Extrusion blow molding HDPE Inner container additives <input type="text" value="Anti-static outer layer"/> ▼ Fluorination level <input type="text"/> ▼
	<b>Accessories</b>	Outer Container Galvanized tubular welded cage Corner protectors <input type="text" value="Yellow"/> ▼ Marking plates <input type="text" value="Valve Side and Back"/> ▼ <input type="text" value="Large Metal 26.5 X 15.75"/> ▼ <input type="text"/> ▼ <input type="text"/> ▼ Fill Port cap <input type="text" value="81610027 LID 6 VNT EPDM BLK FLAT YLW C/S"/> ▼ Discharge Outlet <input type="text" value="81300061 VLV 2 BF QD ETFE FS AS"/> ▼ Inner container/valve gasket <input type="text" value="PE"/> ▼ Pallet Assembly <input type="text" value="PALLET COMPOSITE ASSY ANTISTATIC"/> ▼ Inserts <input type="text"/> ▼ Dip tubes <input type="text"/> ▼
<b>Dimensions</b>		
Outer Length	1200mm	47.25"
Outer width	1000mm	39.4"
Outer height	1151mm	45.3"
<b>Capacity</b>		
Nominal	1040 liters	275 gallons
Brimful	1054 Liters	278 gallons
<b>Weight</b>		
tare weight	56 Kg	123.5 Pounds
add ons: <input type="checkbox"/> CRIMP COVER <input type="checkbox"/> GRIND TOP OF VERTICALS <input type="checkbox"/> LBL CUST PN		
Required labels: <input checked="" type="checkbox"/> 1650 Kg Stack label <input checked="" type="checkbox"/> Mauser Recollect label <input type="checkbox"/> GRN DOT GROUNDED PALLET <input checked="" type="checkbox"/> EX-zones 1 and 2 safety Instructions		
<b>Marking</b>		
<input type="text" value="SM13 275 EX - 31HA1/Y/MM YR/USA/MXXXX/3800Kg/1788Kg/1041L/56Kg/100kPa/MM YR/MM YR"/> ▼		
<b>Notes</b>		