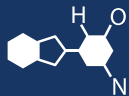


IF YOU...



MIX IT. FILL IT. PACK IT. SHIP IT.

WE HAVE A PRODUCT FOR YOU

Part #: 26BLU8

Steel Pail Closing Tools

6-1/2" Sparkless 8 Lug Manual Closing Tool
(20/22/24 Gauge Lug Covers)



The
CARYCOMPANY
Est. 1895

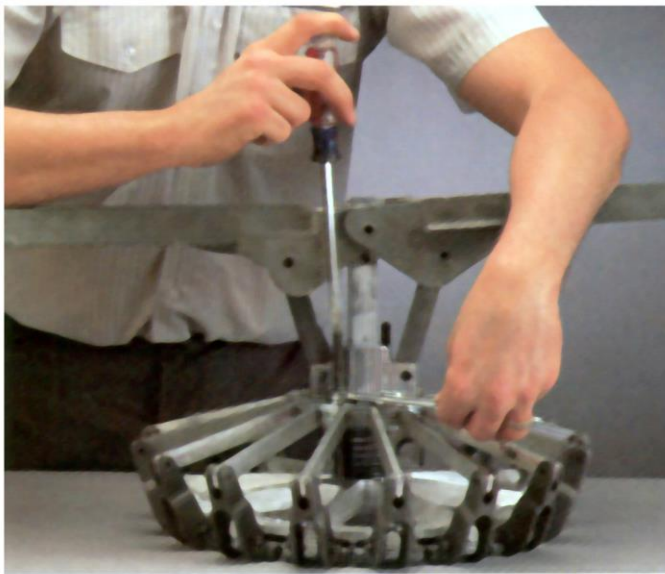
1195 W. Fullerton Ave. | Addison, IL 60101 | T: 630.629.6600 | F: 630.629.3690 |

Closing Tool Specifications and Sizes

Closing Tools are available from 6 1/2" to 13 15/16" in diameter. The Tools are made of aluminum alloys for closing light gauge pails and steel for closing UN heavier gauge pails.

Prices of the tools are available on request. A quantity discount is allowed for purchases of six or more of the same size tool.

Sample cover/pail is required for setup if you are closing UN (20, 22, or 24) gauges.



Adjustment is provided by means of two adjusting bolts for varying the amount of closure.

MANUAL CLOSER



CLOSING TOOL SIZES

6 1/2" diameter	-	2 Lug
6 1/2" diameter	-	8 Lug
8 1/2" diameter	-	12 Lug
11 1/4" diameter	-	2 Lug
11 1/4" diameter	-	16 Lug
12 1/4" diameter	-	16 Lug
13 15/16" diameter	-	10 Lug
13 15/16" diameter	-	20 Lug



To order, send a sample cover or specify diameter as indicated in diagram and give name of container manufacturers.

A sample pail and cover assures the correct tool.