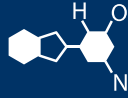


# IF YOU...



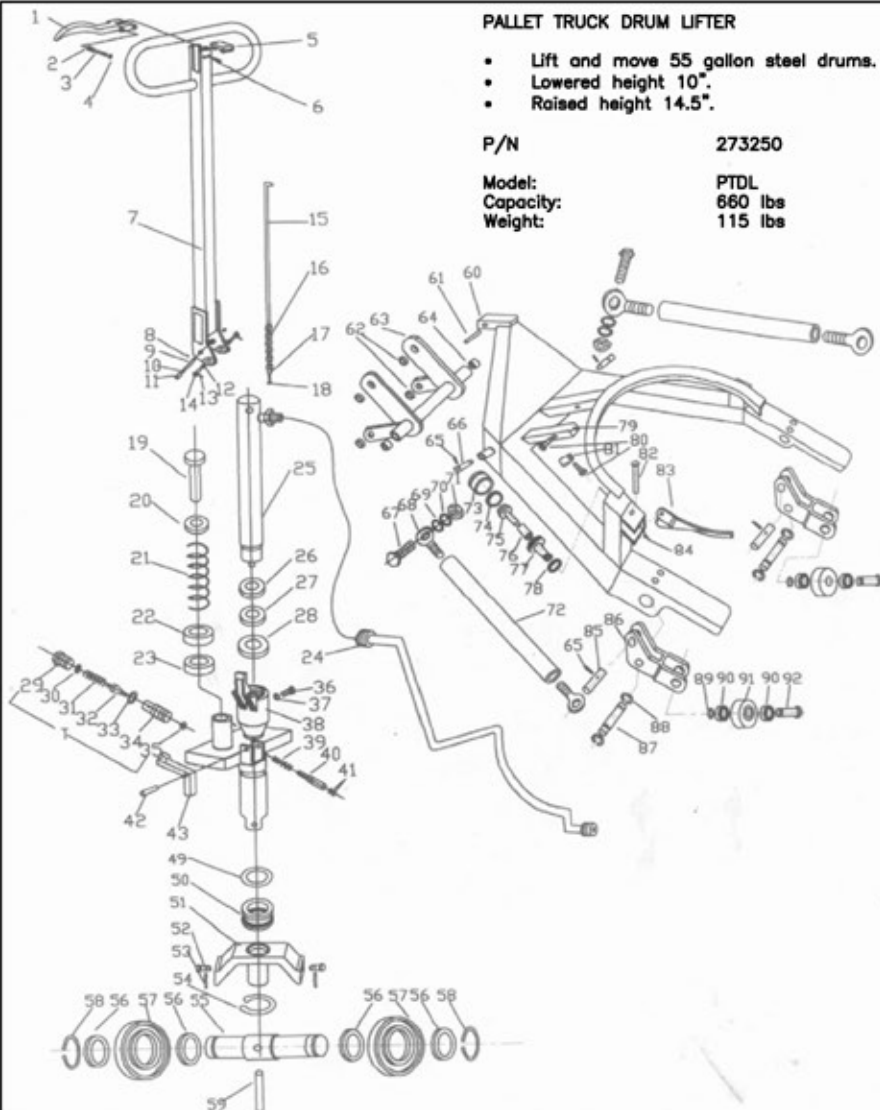
MIX IT. FILL IT. PACK IT. SHIP IT.

# WE HAVE A PRODUCT FOR YOU



Part #	26BPJ5
Color	Yellow
Material	Steel
Weight	115 lbs.
Load Capacity	660 lbs.
Fork Width & Length	28.5" x 26"
Raised Height	8"
Lowered Height	3"
Fork Width	2.5"
Note	*This pallet jack drum lifter is only compatible with 55 gallon steel drums





**PALLET TRUCK DRUM LIFTER**

- Lift and move 55 gallon steel drums.
- Lowered height 10".
- Raised height 14.5".

P/N **273250**  
 Model: **PTDL**  
 Capacity: **660 lbs**  
 Weight: **115 lbs**

REPLACEMENT PARTS				
KIT	PART NO.	ITEM	DESCRIPTION	QTY.
HANDLE KIT	273253	1	DISCHARGE HANDLE	1
		2	STUD	1
		3	SPRING	1
		4	BALL	1
		5	COVER	1
		6	SPRING PIN	1
		7	HANDLE	1
		8	SPRING PIN	1
		9	SHAFT	1
		10	BUSHING	2
		11	PRESS GUIDE	1
		12	BUSHING	2
		13	SET SCREW	2
		14	SHAFT	2
		15	ROD	1
		16	CHAIN	1
		17	STUD	1
		HYDRAULIC CYLINDER KIT	273460	18
19	PUMP PISTON			1
20	SPRING SEAT			1
21	SPRING			1
22	DUST COVER			1
23	OIL SEAL			1
25	LIFT PISTON			1
26	DUST COVER			1
27	OIL SEAL			1
28	OIL SEAL			1
29	SCREW PLUG			1
30	O-RING			1
31	SPRING			1
32	VALVE			1
33	O-RING			1
34	VALVE COVER			1
35	STEEL BALL			1
36	HEX CAP PLUG			1
37	O-RING			1
38	VALVE			1
39	SPRING			1
40	TOP ROD			1
41	O-RING			2
	273495			24
	273461	42	SPRING PIN	1
	273462	43	DISCHARGE BOARD	1
	273463	44	VALVE	1
	273464	45	SPRING	1
	273465	46	BOLT	1
	273466	47	O-RING	1

REPLACEMENT PARTS					
KIT	PART NO.	ITEM	DESCRIPTION	QTY.	
SUPPORT SEAT KIT	273496	48	HEX CAP PLUG	1	
		49	WASHER	1	
		50	BEARING	1	
		51	SUPPORT SEAT	1	
		52	SHAFT	2	
		53	SPRING PIN	2	
		54	C-RING	1	
		273468	55	WHEEL SHAFT	1
		273469	56	BEARING	4
		273251	57	STEERING WHEEL	2
		273470	58	BEARING	2
273471	59	SPRING PIN	1		
N/A	60	CART HOLDER	1		
273472	61	SPRING COLUMN PIN	1		
273473	62	BUSHING	4		
273474	63	BEAM ASSEMBLY	1		
273475	64	BUSHING	2		
273476	65	SPRING COLUMN PIN	4		
273477	66	SHAFT	2		
DRAW ROD KIT	273478	67	HEX CAP BOLT M12	2	
		68	RELEASE ROD	4	
		69	FLAT WASHER	2	
		70	SPRING WASHER	2	
		71	HEX CAP NUT M12	2	
		72	DRAW ROD	2	
		ARC CLAMP PISTON KIT	273479	73	LIFT PISTON CYLINDER
74	PISTON			1	
75	DH50 OIL SEAL			1	
76	SPRING			1	
77	PISTON COVER			1	
78	CIR-NUT M32			1	
273482	79			SUPPORT BOARD	1
273483	80			CIR-SCREW MOUNT	2
273484	81			SHEET IRON	1
273485	82			SHAFT	1
273486	83	ARC CLAMP	1		
273487	84	SPRING	1		
273488	85	SHAFT	2		
273489	86	WHEEL HOLDER	2		
273490	87	SHAFT	2		
273491	88	C-RING	4		
273492	89	C-RING	2		
273493	90	BEARING	4		
273252	91	LOAD WHEEL	2		
273494	92	SHAFT	2		