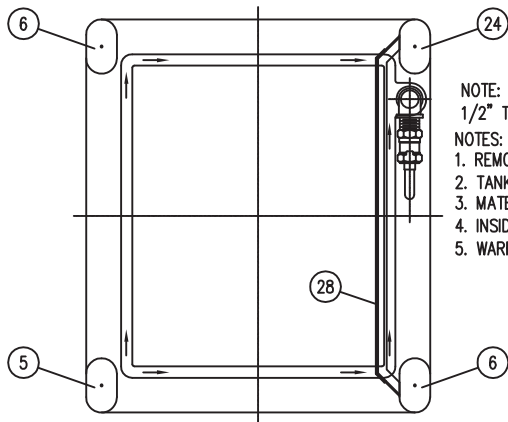
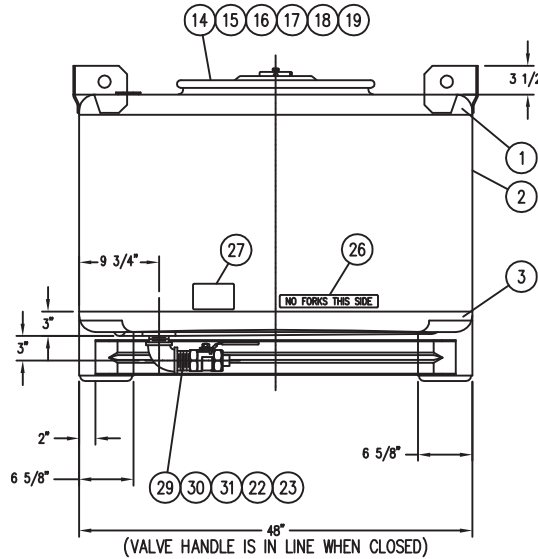
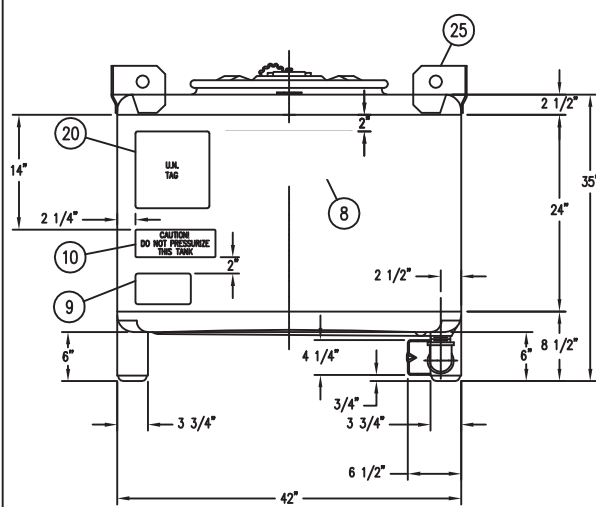


DETAIL ITEM #7
SCALE: NONE

DRUM NECK SECTION
SCALE: NONE

NOTE: IF APPLICABLE, PER TITLE 49CFR, BOTH THE 22 1/2" CLOSURE CLAMP RING, BOLT, NUT AND THE 2" BUNG PLUG MUST BE TIGHTENED TO A TORQUE OF 30 Ft.-lbs. TO SATISFY THE PERFORMANCE REQUIREMENTS.



NOTE: BOTTOM SUMP SLOPES 1/2" TOWARDS OPENING

NOTES:
1. REMOVE ALL BURRS AND SHARP EDGES.
2. TANK FABRICATED W/2" RADIUS CORNERS AND HIGH CONTOUR LEGS.
3. MATERIAL OF CONSTRUCTION IS 304 S.S. AND NOTED.
4. INSIDE OF TANK TO BE WIPED CLEAN AT FINAL ASS'Y.
5. WARRANTY TAG TO BE WIRED TO CLAMP RING AT FINAL ASS'Y.

ITEM NO.	QUANTITY	PART NO.	DESCRIPTION
1	1	534847	TOP - 10 GA. - 304 S.S.
2	2 PC	951005	SHELL - 10 GA. - 304 S.S.
3	1	534848	BOTTOM - 10 GA. - 304 S.S.
4	-	-----	OMIT.
5	1	534864	RIGHT LEG W/CAP - HIGH CONTOUR - 6" TALL - 304 S.S.
6	2	534865	LEFT LEG W/CAP - HIGH CONTOUR - 6" TALL - 304 S.S.
7	1	540908	WARRANTY TAG - ORANGE CARDBOARD.
8	1	540069	DECAL - "TRANSTORE".
9	1	541251	DECAL - "THIS TANK MUST BE VENTED PRIOR TO DISCHARGE".
10	1	540009	DECAL - "CAUTION! DO NOT PRESSURIZE THIS TANK".
11	1	535236	WELD FLANGE - 2" SIZE - 304 S.S.
12	1	542997	PLUG W/CROSSBAR - 2" SIZE - 304 S.S.
13	1	541100	GASKET - 2" SIZE - EPT.
14	1	520419	DRUM COVER W/EYEBROWS - 22 1/2" DIA. NOM. W/3" NIPPLE & WIRE SEAL LUG - 304 S.S.
15	1	545108	EPDM MULTI-SEAL GASKET.
16	1	534487	CLAMP RING - PLATED STEEL.
17	1	540071	BOLT - 5/8" NC X 5" LG. - PLATED STEEL.
18	1	540072	NUT - 5/8" NC - PLATED STEEL.
19	1	530946	DRUM NECK - 22 1/2" DIA. NOM. X 7/16" DIA. - 304 S.S.
20	1	557784	U.N. TAG - 304 S.S.
21	1	540813	FUSIBLE CAP-3" NPS-316 S.S. W/TEFLON GASKET,LANYARD & COMP. SLEEVE.
22	1	541830	VALVE, BALL 2" NPT W/OFFSET HANDLE & LOCK-316 S.S. W/TEFLON SEATS.
23	1	540063	SHIPPING SEAL - 2" NPT SQUARE HEAD - PVC.
24	1	534864N	RIGHT LEG W/CAP - HIGH CONTOUR - 6" TALL - 304 S.S.
25	4	534843	LIFTING LUG W/LARGE RADIUS CORNER - 1/4 THK - 304 S.S.
26	1	540001	DECAL - "NO FORKS THIS SIDE".
27	1	540029	DECAL - "OPEN, CLOSED" - FOR VALVE.
28	1	534547	VALVE GUARD - 10 GA. - 304 S.S.
29	1	530196	NIPPLE - 2" NPT X 1 1/2" LG. (TOE) - 304 S.S.
30	1	540066	ELBOW - 2" NPT X 90 DEG. - 304 S.S.
31	1	540068	NIPPLE - 2" NPT X 3" LG. (TBE) - 304 S.S.

①	31AYI	U.S.A. M5406
4082	2041	946
AT ASSY		
304 S.S.		
1.95	0	AT ASSY
512072	250 GAL	4500
AT ASSY		
4082		
Kg MAX		

MATERIAL FINISHES	
INTERIOR	2B
EXTERIOR	2B
WELD FINISHES	
INTERIOR	STANDARD CLEAN
EXTERIOR	STANDARD CLEAN

The **CARY COMPANY**
Est. 1895

REVISION SYMBOL	REVISED BY	REVISION DATE	DESCRIPTION OF CHANGE	DRAWN BY	DATE DRAWN	APPROVED BY	DATE APPROVED
F	R.K.L.	9-2-10	REVISED UN TAG.	DRL	7-10-01		
E	R.K.L.	12-8-09	REVISED SHELL TO 10 GA.				
D	MDM	1-16-03	REVISED FOR VERIFICATION				
C	DRL	4-29-02	UPDATED DOT TAG FOR 250-GAL TANK				
B	DRL	8-1-01	REVISED BILL OF MATERIALS				
CODE	ACADR14	PLOTTER SCALE 1" = 12"	DO NOT SCALE DRAWING	FILE NUMBER			

TITLE			
250 GALLON TANK - 304 S.S.			
CUSTOMER			
JOB			
NO REQ'D.	WORK ORDER NO.	PURCHASE ORDER NO.	
DRAWN BY	DATE DRAWN	APPROVED BY	DATE APPROVED
DRL	7-10-01		
DRAWING NO.			REVISION LEVEL
			F