

# IF YOU...



MIX IT. FILL IT. PACK IT. SHIP IT.

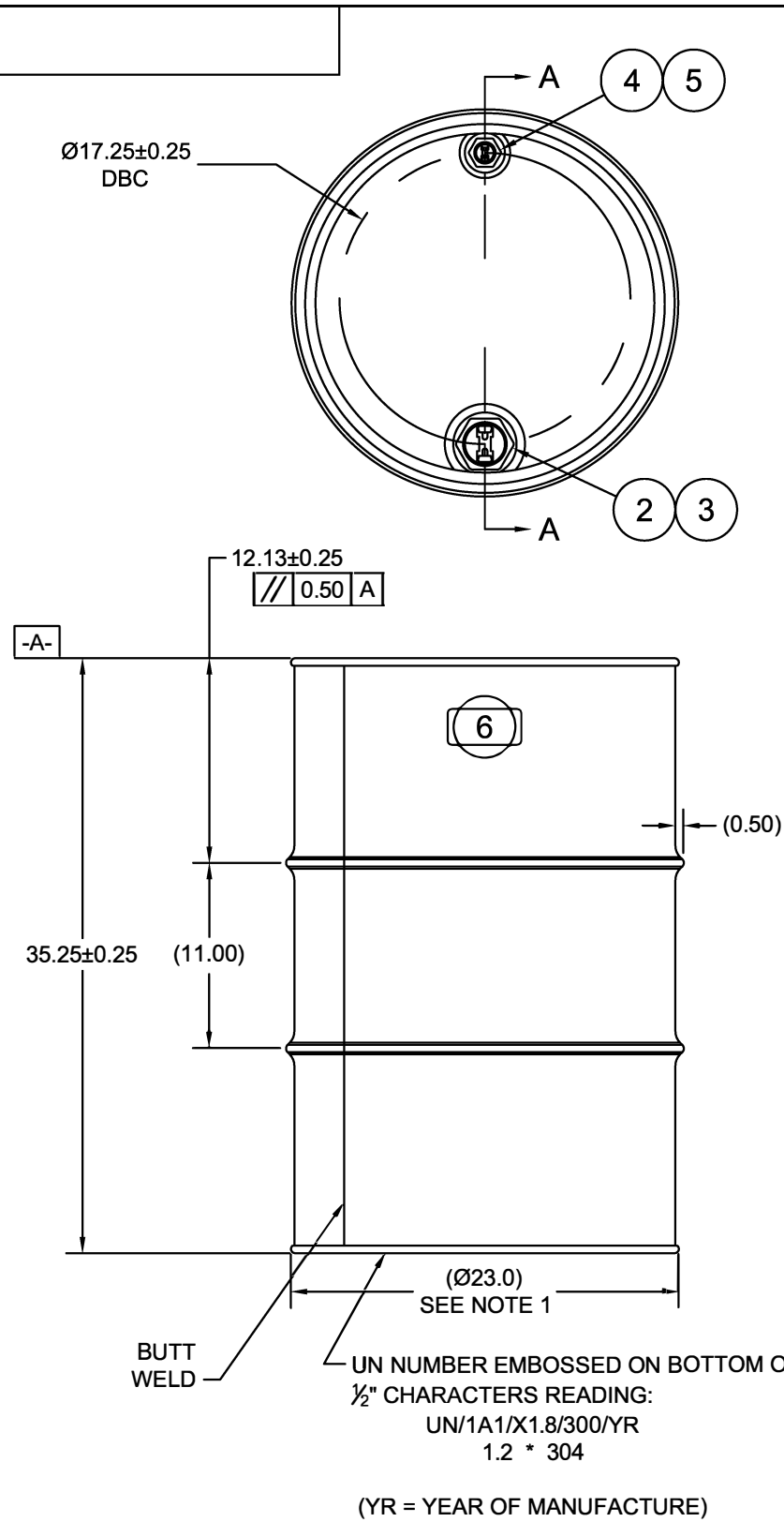
## WE HAVE A PRODUCT FOR YOU



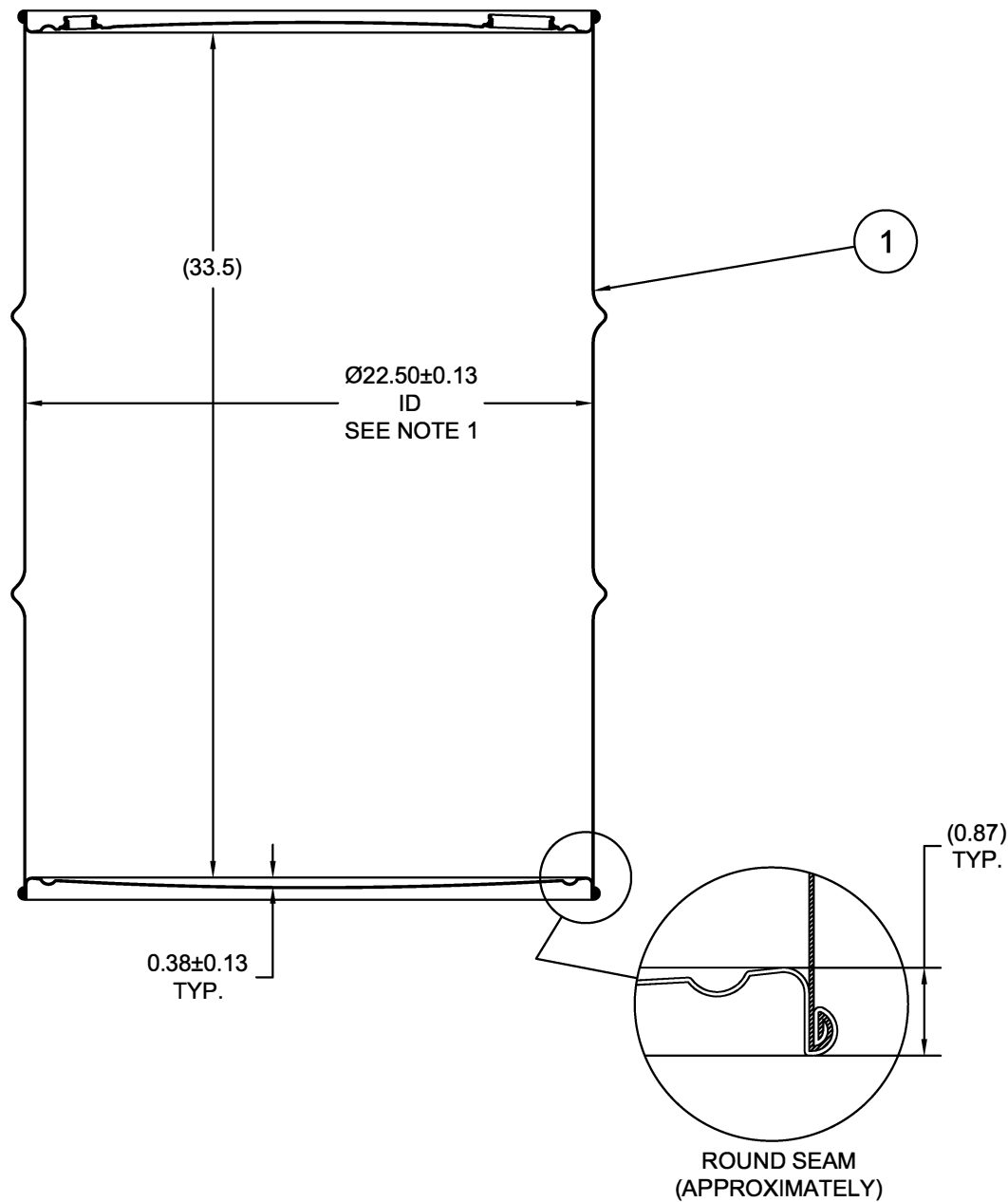
Part #	26BST5
Capacity	55 Gal.
Condition	New
Color	Stainless Steel
Material	Stainless Steel (304)
Closure	Tight Head
Steel Thickness	1.2/1.2/1.2 (Top/Body/Bottom)
Steel Gauge	18/18/18 (Top/Body/Bottom)
Gasket	2" NPT & 3/4" NPT
Dimensions	22.5" Dia. x 33.5" H (inside) 23" Dia. x 35.25" H (outside)
Weight	48 lbs.
UN Rating Liquid	UN1A1/X1.8/300



ECN # or INIT	REV	DESCRIPTION	DATE
OE-005	A1	REDRAWN TO AutoCAD	13-SEP-2010
OE-001	A2	CLERICAL ERROR	13-SEP-2010
OE-001	A3	CLERICAL ERROR	11-APR-2013
OE-001	A4	ADDED SEAM PROFILE	18-APR-2013
OE-001	A5	CORRECTED NOTE	24-APR-2013



**SECTION A-A**  
(FITTING SHOWN WITH PLUGS REMOVED)



**NOTES:**

1. TO DETERMINE GREATER ACCURACY OF ANY DIAMETRIC DIMENSION, MEASURING OF CIRCUMFERENCE IS REQUIRED
2. CONSTRUCTION per 49 CFR §178.504 (b)

**MATERIAL:**

1. 304SS PER ASTM A240 OR EQUIVALENT
2. MATERIAL THICKNESS: 1.2mm (0.0433 - 0.0480; 18 GAUGE)

**FINISH:**

1. PASSIVATED INNER AND OUTER SURFACE OF BODY WELD SEAM

6		UN DURABLE LABEL	1
5	PT3050	PLUG 3/4 TS 316SS BUNA GASKET	1
4	FT3050	FLANGE 3/4 TS 316SS BUNA GASKET	1
3	PT2050	PLUG 2 TS 316SS BUNA GASKET	1
2	FT2050	FLANGE 2 TS 316SS BUNA GASKET	1
1		55 GALLON TIGHT HEAD DRUM	1
ITEM	P/N	DESCRIPTION	QTY

MFG BR	DRW LJT	CHK BL	<b>UNLESS STATED OTHERWISE</b> (DIMENSIONS IN PARENTHESIS ARE FOR REFERENCE ONLY!!!) ALL DIMENSIONS ARE IN INCHES DO NOT SCALE DRAWING TOLERANCES: FRACTIONS ±1/4
SLS	QA MD	X° ± 3°	
APR G. Petersen		X.X ± 0.2	
FILE CREATED IN AutoCAD 2002	3 <sup>RD</sup>	X.XX ± 0.10 X.XXX ± 0.030	

The **CARY COMPANY**  
Est. 1895

DESCRIPTION  
55 GALLON TIGHT HEAD DRUM  
1.2 - 1.2 - 1.2 304SS STEEL  
1A1/X1.8/300

REL. DATE	PART NUM. / FILENAME	REV
		<b>A5</b>

TARE WEIGHT:  
48 lbs