

# IF YOU...



MIX IT. FILL IT. PACK IT. SHIP IT.

# WE HAVE A PRODUCT FOR YOU



Part #	26BSV0
Capacity	110 gal.
Condition	New
Color	Yellow
Material	Carbon Steel
Closure	Cover w/ Bolt Ring Closure
Lining	Rust Inhibitor Enamel
Steel Thickness	1.5/1.5/1.5 (Top/Body/Bottom)
Steel Gauge	16/16/16 (Top/Body/Bottom)
Gasket	EPDM Rubber Gasket
Dimensions	30" Dia. x 40.8"H (inside) 30.4" Dia. x 42.5"H (outside)
Weight	100 lbs.
UN Rating Solid	UN1A2/Y409/S

ECN #	REV	DESCRIPTION	DATE
	00	RELEASE	27-JUL-2004
OE-001	A1	CLERICAL ERROR	07-APR-2010
10-007	A2	BOLT WAS 4in LONG	29-NOV-2010
10-008	A2	GASKET WAS GS1101	29-NOV-2010
OE-001	A3	CLERICAL ERROR	10-APR-2013
OE-001	A4	ADDED SEAM PROFILE	24-APR-2013
OE-018	A5	WAS MULTI-LINGUAL SALVAGE LOGO	21-OCT-2016

**NOTES:**

1. THESE DIMENSIONS REPRESENT DRUM AFTER BEING PROPERLY ASSEMBLED AND CLOSED PER CLOSING INSTRUCTIONS
2. TO DETERMINE GREATER ACCURACY OF ANY DIAMETRIC DIMENSION, MEASURING OF CIRCUMFERENCE IS REQUIRED
3. CONSTRUCTION per 49 CFR §178.504 (b)

**MATERIAL:**

1. DRUM BODY AND COVER CRCQ CARBON STEEL PER ASTM A1008 AND ASTM A568
2. MATERIAL THICKNESS 1.5mm (0.0543 - 0.0590;16 GAUGE)
3. GASKET MAT'L PER ASTM D1056

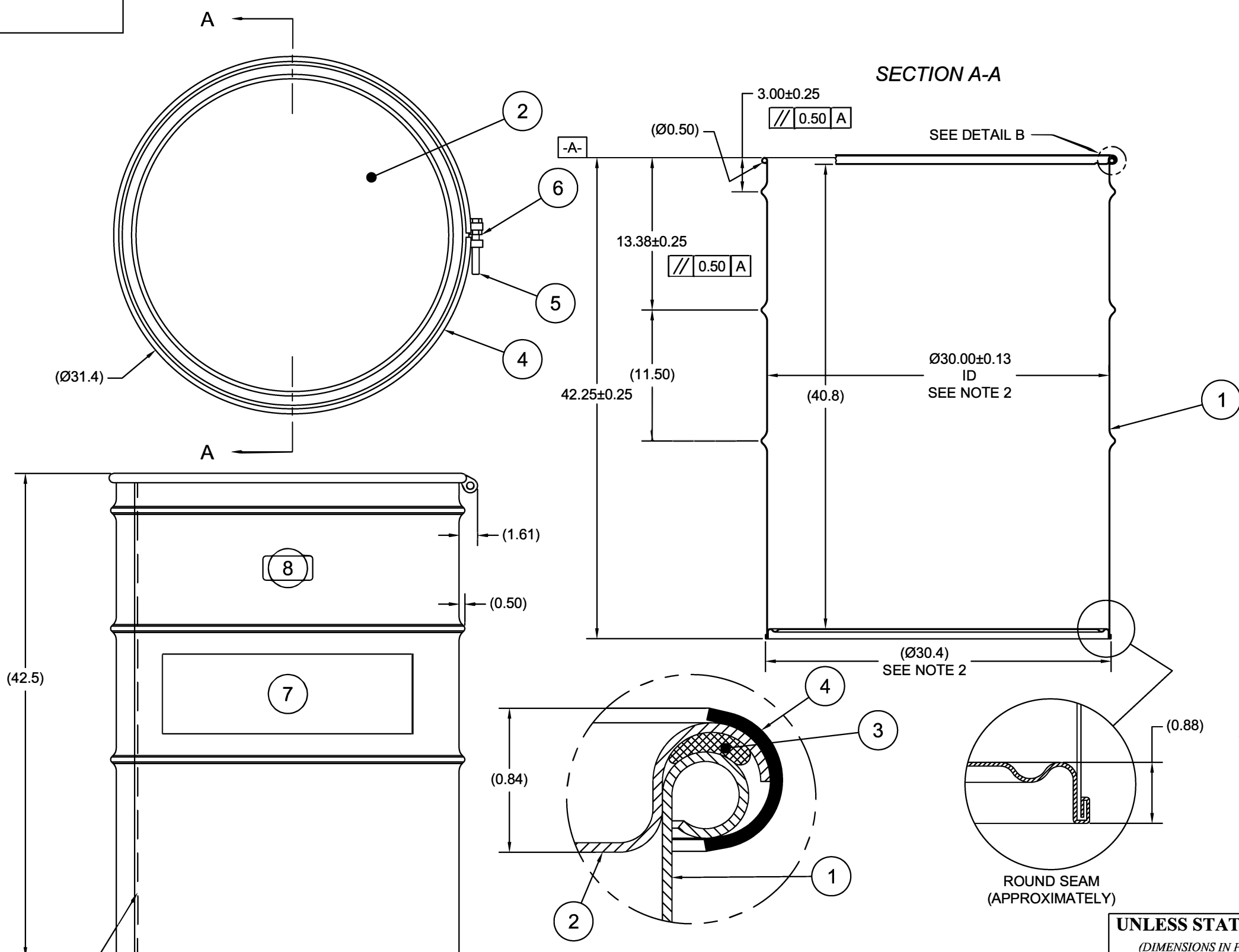
**FINISH:**

1. DRUM BODY EXTERIOR PAINTED YELLOW (LQ10024)
- COVER EXTERIOR PAINTED RED (LQ10017).

ITEM	P/N	DESCRIPTION	QTY
8		UN DURABLE LABEL	1
7	LS1000	LOGO SALVAGE DRUM	1
6	NT5800	5/8-11UNC HEX JAM NUT	1
5	BT5845	5/8-11UNC X 4 1/2in LONG HEX HEAD BOLT	1
4	RB1112	BOLT RING Ø30in 12GA 5/8 LUG	1
3	GE1101	Ø1/2in ROUND EPDM GASKET	1
2	P3015	COVER Ø30in ID	1
1		DRUM BODY AND BOTTOM	1

△A5

**SECTION A-A**



OVERLAP WELD

UN NUMBER EMBOSSED ON BOTTOM OF DRUM  
 1/2" CHARACTERS READING:  
 UN/1A2/Y409/S/YR  
 1.5 \*  
 (YR = YEAR OF MANUFACTURE)

TARE WEIGHT:  
100 lbs

**APPROVAL  
ON FILE**

FILE CREATED IN  
AutoCAD

**UNLESS STATED OTHERWISE**

(DIMENSIONS IN PARENTHESIS ARE FOR REFERENCE ONLY!!!)  
 ALL DIMENSIONS ARE IN INCHES  
 DO NOT SCALE DRAWING  
 TOLERANCES:  
 FRACTIONS ±1/4  
 X° ± 3°  
 X.X ± 0.2  
 X.XX ± 0.10  
 X.XXX ± 0.030



DESCRIPTION  
110 GALLON OPEN HEAD DRUM  
1.5 - 1.5 - 1.5 CRCQ STEEL  
1A2/Y409/S

REL. DATE 22-MAY-2007 PART NUM. / FILENAME REV A5