

IF YOU...



MIX IT. FILL IT. PACK IT. SHIP IT.

WE HAVE A PRODUCT FOR YOU



10 Gallon Steel Salvage Drum, Cover w/Lever Lock Ring Closure

Part #	26BSV1
Capacity	10 gal.
Condition	New
Color	Yellow
Material	Carbon Steel
Closure	Cover w/ Lever Lock Ring Closure
Lining	Rust Inhibitor Enamel
Steel Thickness	0.9/0.9/0.9 (Top/Body/Bottom)
Steel Gauge	20/20/20 (Top/Body/Bottom)
Gasket	EPDM Rubber Gasket
Dimensions	14"Dia. x 17.4" H (inside) 14.3"Dia. x 18.9"H (outside)
Weight	15 lbs.
UN Rating Solid	UN1A2/X120/S

ECN # or INIT	REV	DESCRIPTION	DATE
OE-005	A1	REDRAWN TO AutoCAD	17-DEC-2012
OE-001	A2	CLERICAL ERROR	12-APR-2013
		CORRECTED RING PROFILE & ADDED CHIME VIEW &	
OE-013	A3	REVISED HOOP PROFILE	22-APR-2013
OE-018	A4	WAS MULTI-LINGUAL SALVAGE LOGO	14-OCT-2016
17-001	A5	REMOVED LIQUID RATING	04-APR-2017
17-003	B	COVER WAS 18GA	14-SEP-2017

NOTES:

1. THESE DIMENSIONS REPRESENT DRUM AFTER BEING PROPERLY ASSEMBLED AND CLOSED PER CLOSING INSTRUCTIONS.
2. TO DETERMINE GREATER ACCURACY OF ANY DIAMETRIC DIMENSION, MEASURING OF CIRCUMFERENCE IS REQUIRED
3. CONSTRUCTION per 49 CFR §178.504 (b)

MATERIAL:

1. DRUM BODY AND COVER CRCQ CARBON STEEL PER ASTM A1008 AND ASTM A568
2. MATERIAL THICKNESS: 0.9mm (0.0319 - 0.0370, 20 GAUGE)
3. GASKET MAT'L PER ASTM D1056

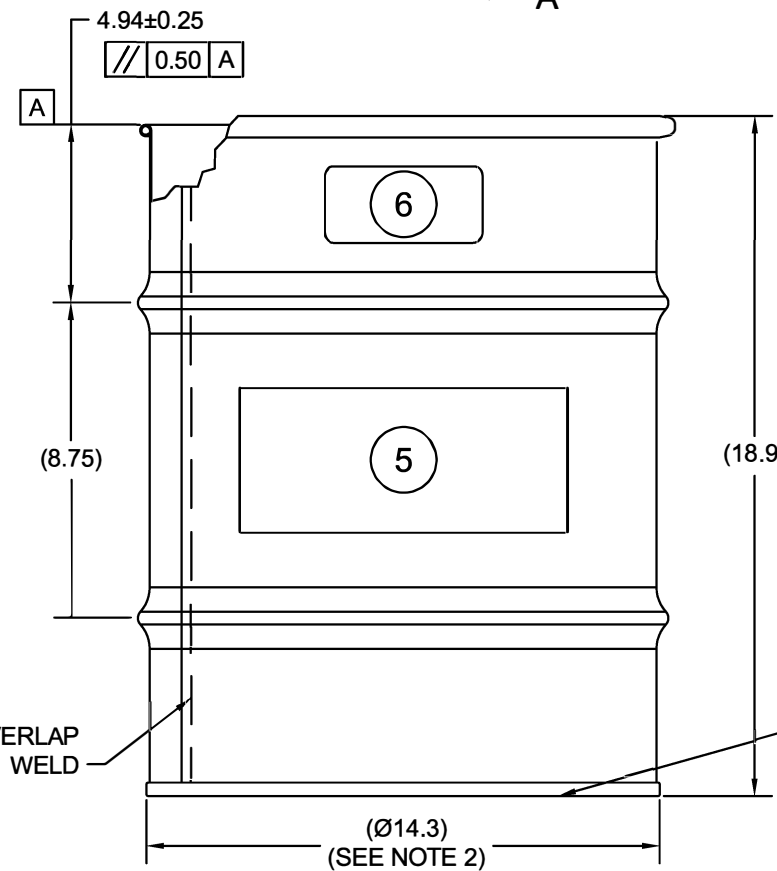
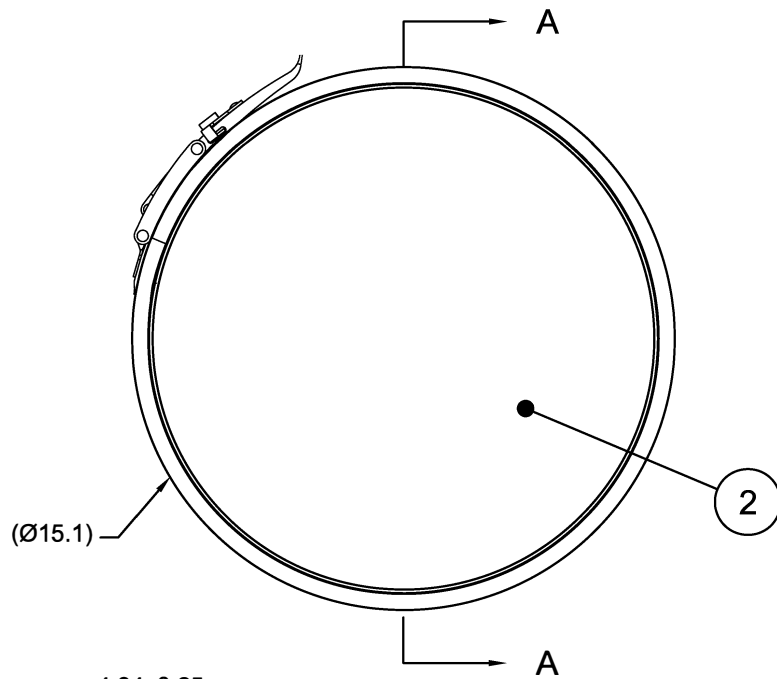
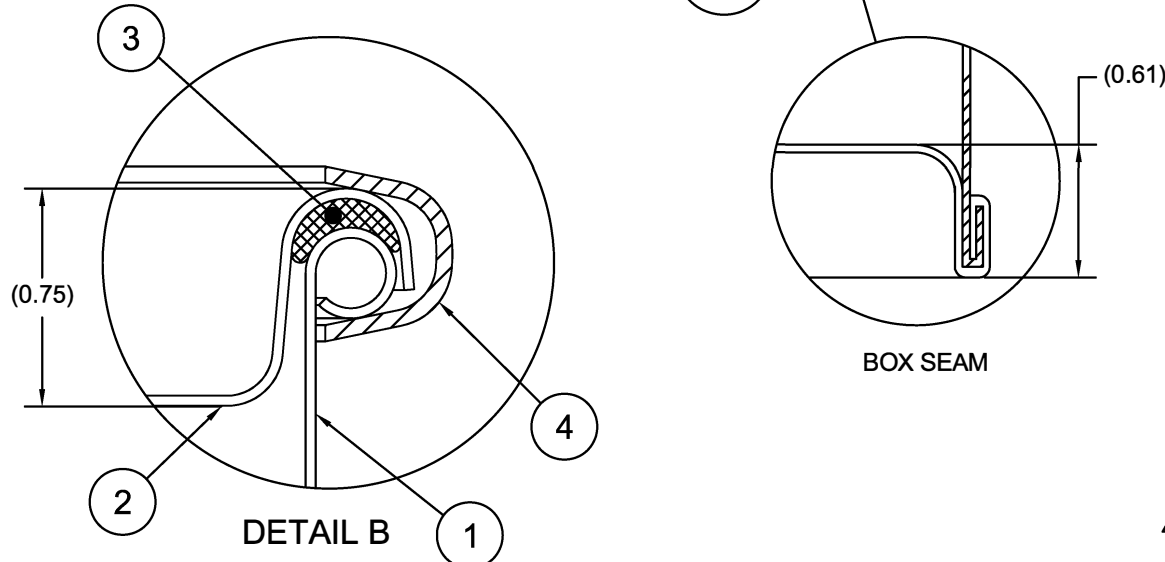
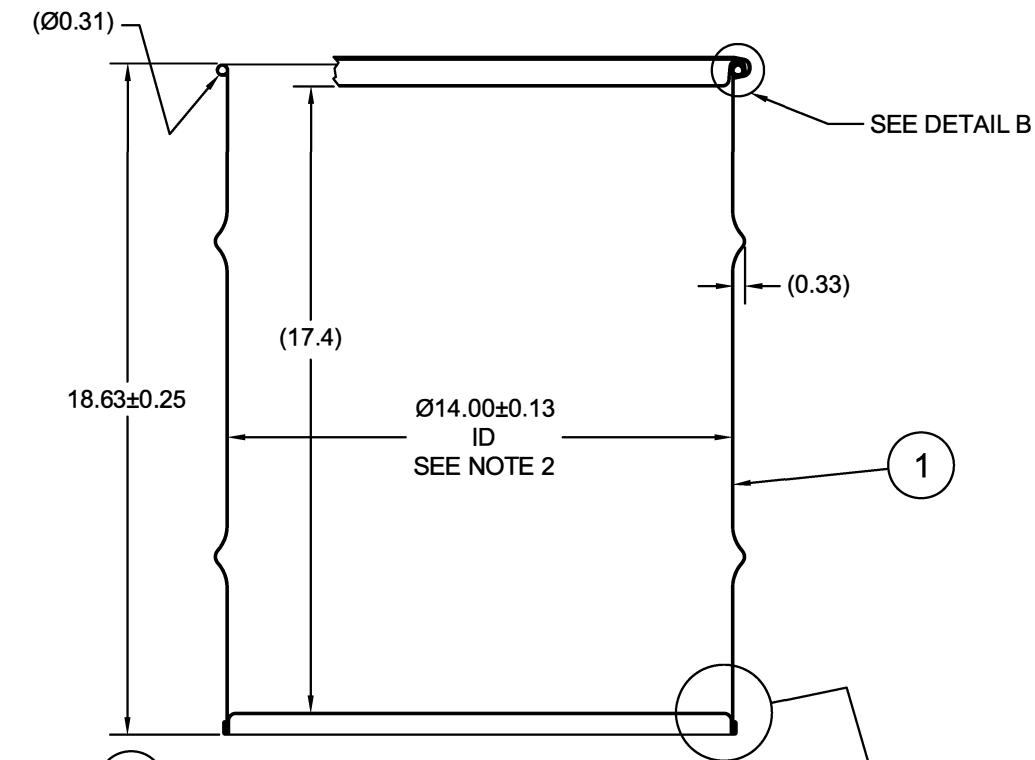
FINISH:

1. DRUM BODY EXTERIOR PAINTED BLACK (LQ10003)
COVER EXTERIOR PAINTED WHITE (LQ10020)

6		UN DURABLE LABEL	1
5	LS1000	LOGO SALVAGE DRUM	1
4	RQ0516	14 DIA QUICK LEVERLOCK RING	1
3	GE0503-01	GASKET, EPDM, Ø3/8	1
2	P1409	COVER, Ø14.00 DRUM, CRCQ STEEL	1
1		BODY/BOTTOM 10 GALLON DRUM 14 ID	1
ITEM	P/N	DESCRIPTION	QTY

△ B

SECTION A-A



OVERLAP WELD

UN NUMBER EMBOSSED ON BOTTOM OF DRUM
½" CHARACTERS READING:

UN1A2/X120/SYR

△ B 0.9 *

(YR = YEAR OF MANUFACTURE)

TARE WEIGHT:
15 lbs

UNLESS STATED OTHERWISE

(DIMENSIONS IN PARENTHESIS ARE FOR REFERENCE ONLY!!!)

ALL DIMENSIONS ARE IN INCHES
DO NOT SCALE DRAWING

TOLERANCES:
FRACTIONS ±1/4

X° ± 3°
X.X ± 0.2
X.XX ± 0.10
X.XXX ± 0.030

APPROVAL ON FILE

FILE CREATED IN AutoCAD

3RD

The **CARY COMPANY**
Est. 1895

DESCRIPTION
10 GALLON OPEN HEAD DRUM
0.9 - 0.9 - 0.9 CRCQ STEEL
1A2/X120/S

REL. DATE

PART NUM. / FILENAME

REV

B