

IF YOU...



MIX IT. FILL IT. PACK IT. SHIP IT.

WE HAVE A PRODUCT FOR YOU



110 Gallon Steel Salvage Drum, Cover w/Bolt Ring Closure, Lined

Part #	26BSVA
Capacity	110 gal.
Condition	New
Color	Yellow
Material	Carbon Steel
Closure	Cover w/ Bolt Ring Closure
Lining	Epoxy Phenolic Lining
Steel Thickness	1.5/1.5/1.5 (Top/Body/Bottom)
Steel Gauge	16/16/16 (Top/Body/Bottom)
Gasket	EPDM Rubber Gasket
Dimensions	30" Dia. x 40.8"H (inside) 30.4" Dia. x 42.5"H (outside)
Weight	100 lbs.
UN Rating Solid	UN1A2/Y409/S

ECN #	REV	DESCRIPTION	DATE
	00	RELEASE	27-JUL-2004
OE-001	A1	CLERICAL ERROR	07-APR-2010
10-007	A2	BOLT WAS 4in LONG	29-NOV-2010
10-008	A2	GASKET WAS GS1101	29-NOV-2010
OE-001	A3	CLERICAL ERROR	10-APR-2013
OE-001	A4	ADDED SEAM PROFILE	24-APR-2013
OE-018	A5	WAS MULTI-LINGUAL SALVAGE LOGO	21-OCT-2016

NOTES:

1. THESE DIMENSIONS REPRESENT DRUM AFTER BEING PROPERLY ASSEMBLED AND CLOSED PER CLOSING INSTRUCTIONS
2. TO DETERMINE GREATER ACCURACY OF ANY DIAMETRIC DIMENSION, MEASURING OF CIRCUMFERENCE IS REQUIRED
3. CONSTRUCTION per 49 CFR §178.504 (b)

MATERIAL:

1. DRUM BODY AND COVER CRCQ CARBON STEEL PER ASTM A1008 AND ASTM A568
2. MATERIAL THICKNESS 1.5mm (0.0543 - 0.0590;16 GAUGE)
3. GASKET MAT'L PER ASTM D1056

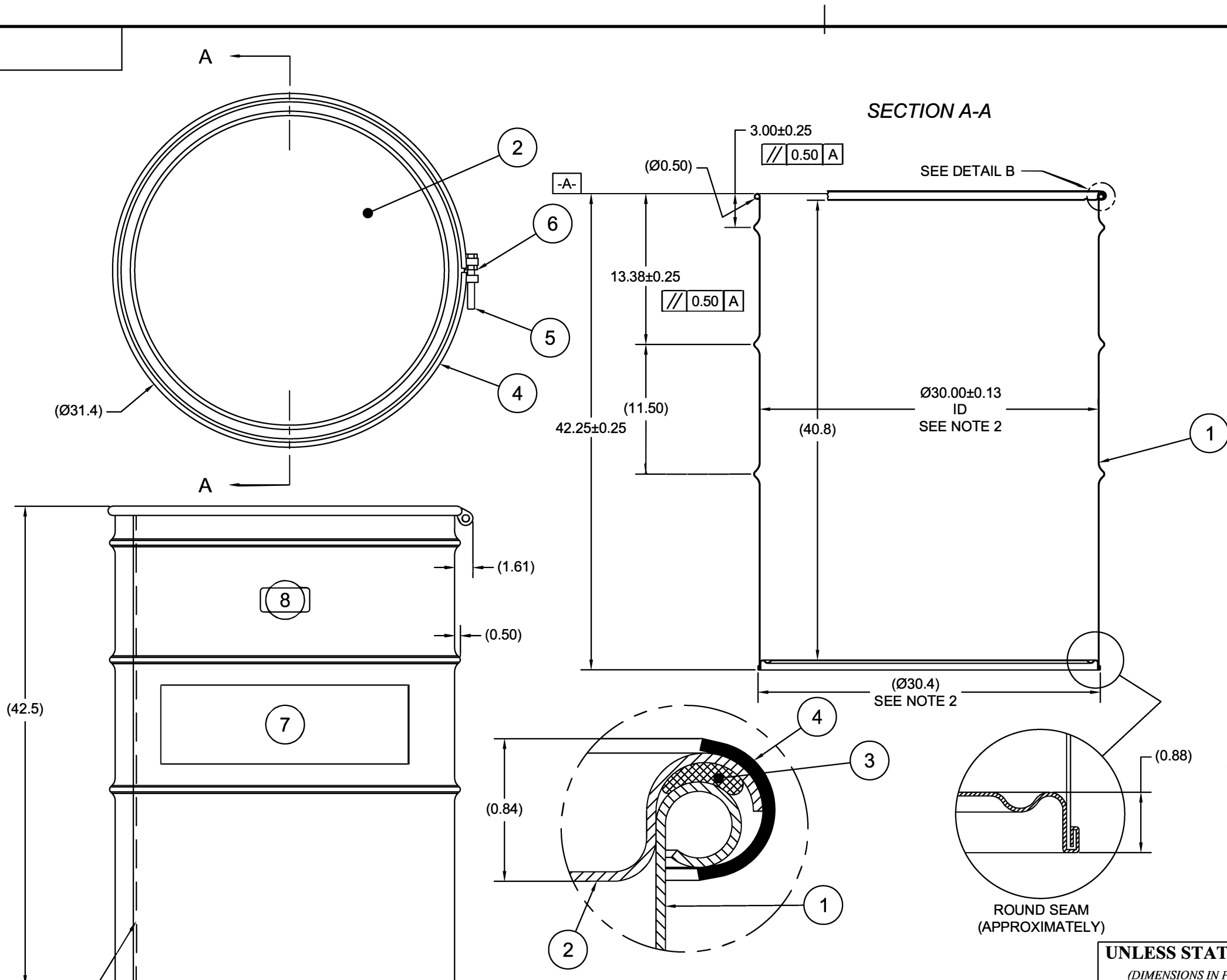
FINISH:

1. DRUM BODY EXTERIOR PAINTED YELLOW (LQ10024)
COVER EXTERIOR PAINTED RED (LQ10017).

ITEM	P/N	DESCRIPTION	QTY
8		UN DURABLE LABEL	1
7	LS1000	LOGO SALVAGE DRUM	1
6	NT5800	5/8-11UNC HEX JAM NUT	1
5	BT5845	5/8-11UNC X 4 1/2in LONG HEX HEAD BOLT	1
4	RB1112	BOLT RING Ø30in 12GA 5/8 LUG	1
3	GE1101	Ø1/2in ROUND EPDM GASKET	1
2	P3015	COVER Ø30in ID	1
1		DRUM BODY AND BOTTOM	1

△A5

SECTION A-A



OVERLAP WELD

UN NUMBER EMBOSSED ON BOTTOM OF DRUM
1/2" CHARACTERS READING:
UN/1A2/Y409/S/YR
1.5 *
(YR = YEAR OF MANUFACTURE)

TARE WEIGHT:
100 lbs

**APPROVAL
ON FILE**

FILE CREATED IN
AutoCAD

UNLESS STATED OTHERWISE

(DIMENSIONS IN PARENTHESIS ARE FOR REFERENCE ONLY!!!)
ALL DIMENSIONS ARE IN INCHES
DO NOT SCALE DRAWING
TOLERANCES:
FRACTIONS ±1/4
X° ± 3°
X.X ± 0.2
X.XX ± 0.10
X.XXX ± 0.030

The **CARY COMPANY** Est. 1895

DESCRIPTION
110 GALLON OPEN HEAD DRUM
1.5 - 1.5 - 1.5 CRCQ STEEL
1A2/Y409/S

REL. DATE
22-MAY-2007

PART NUM. / FILENAME

REV
A5