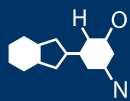


IF YOU...



MIX IT. FILL IT. PACK IT. SHIP IT.

WE HAVE A **PRODUCT** FOR YOU

Part # 26BT13



ECN # or INIT	REV	DESCRIPTION	DATE
	A1	DRAWN IN AutoCAD	25-FEB-2013
OE-001	A2	CLERICAL ERROR	11-APR-2013
OE-001	A3	ADDED CHIME PROFILE	26-APR-2013

NOTES:

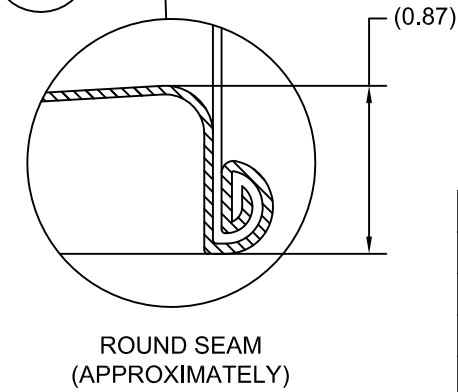
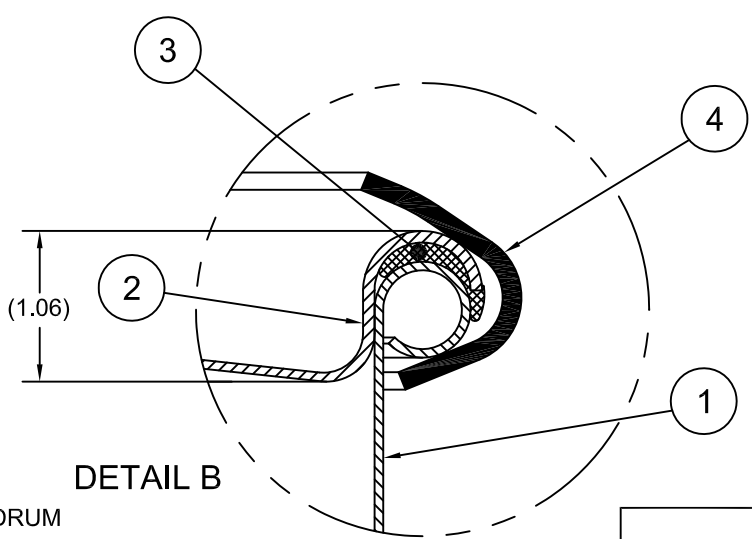
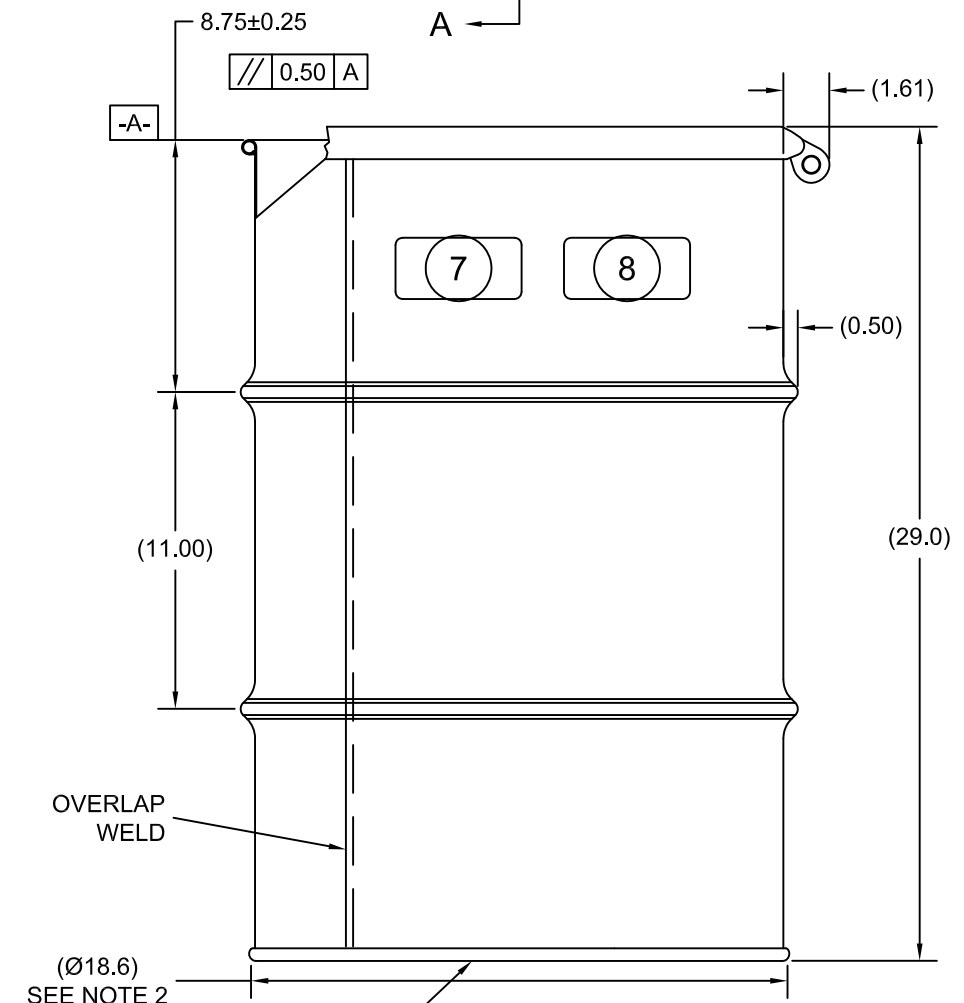
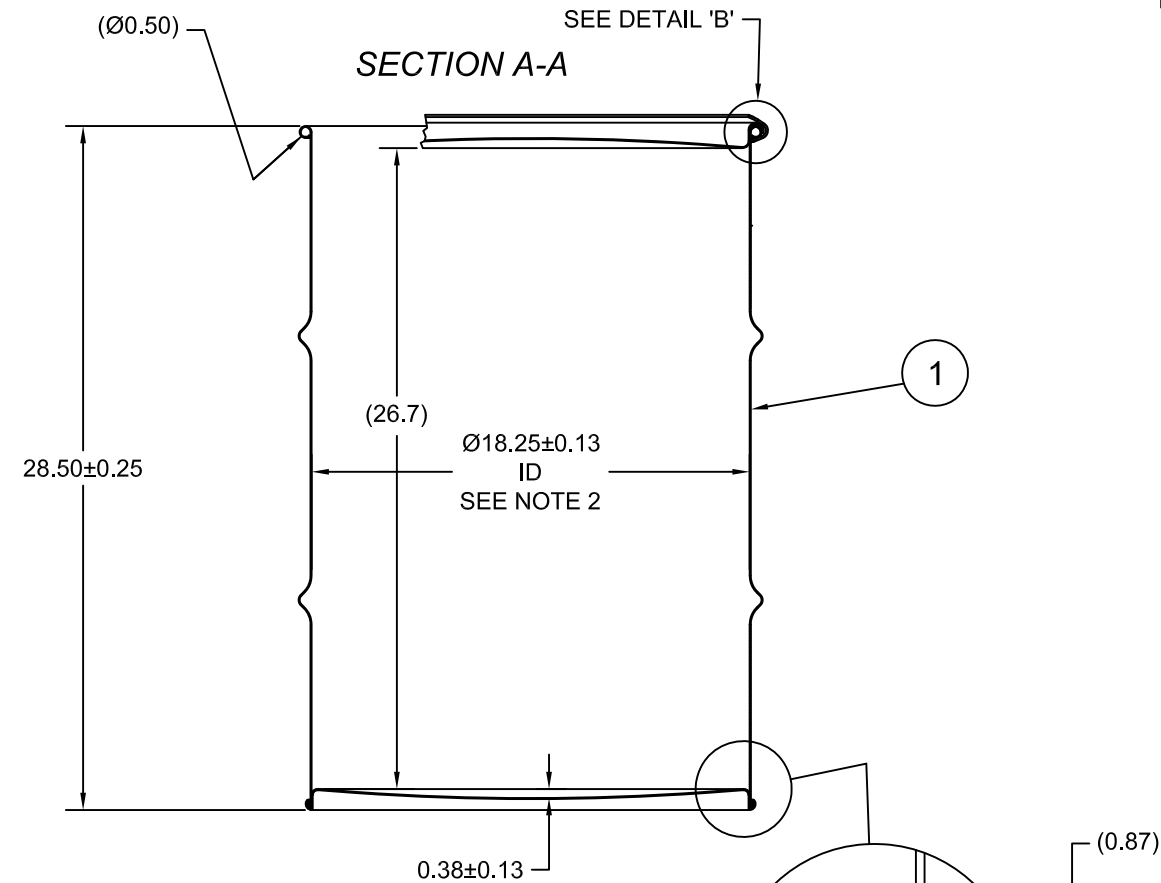
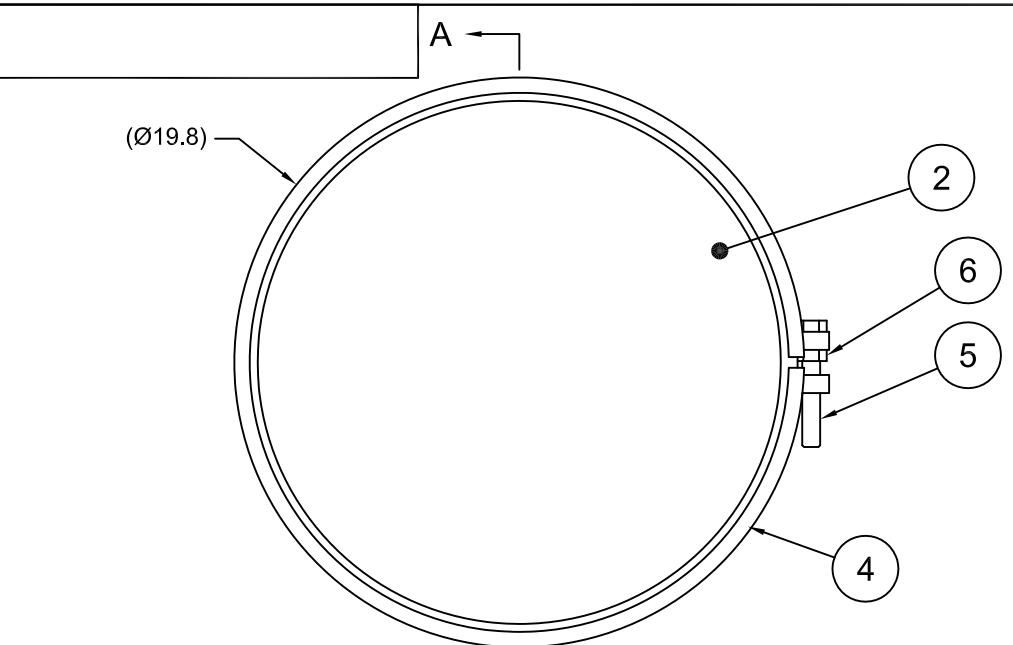
1. THESE DIMENSIONS REPRESENT DRUM AFTER BEING PROPERLY ASSEMBLED AND CLOSED PER CLOSING INSTRUCTIONS
2. TO DETERMINE GREATER ACCURACY OF ANY DIAMETRIC DIMENSION, MEASURING OF CIRCUMFERENCE IS REQUIRED
3. CONSTRUCTION per 49 CFR §178.504 (b)

MATERIAL:

1. DRUM BODY AND COVER CRCQ CARBON STEEL PER ASTM A1008 AND ASTM A568 OR EQUIVALENT
2. MATERIAL THICKNESS: 1.5mm (0.0543 - 0.0590, 16 GAUGE)
3. GASKET MAT'L PER ASTM D1056

FINISH:

1. DRUM BODY EXTERIOR PAINTED BLACK (LQ10003)
- COVER EXTERIOR PAINTED RED (LQ10017)



ITEM	P/N	DESCRIPTION	QTY
8		UN DURABLE LABEL	1
7		DURABLE LABEL, "+ 15 PSI"	1
6	NT5800	5/8-11UNC HEX JAM NUT	1
5	BT5840	5/8-11UNC X 4in LONG HEX HEAD BOLT	1
4	RBH1812	BOLT RING 20-30G 12 GA 5/8 LUG	1
3	GE2000	GASKET EPDM IN-COVER 'D' BLACK	1
2	P1815	COVER, Ø18.25 DRUM, CRCQ STEEL	1
1		30 GALLON DRUM BODY AND BOTTOM	1

UN NUMBER EMBOSSED ON BOTTOM OF DRUM
 ½" CHARACTERS READING: UN/1A2/X235/S/YR
 UN/1A2/Y1.5/200/YR
 1.5 *

(YR = YEAR OF MANUFACTURE)

TARE WEIGHT:
43 lbs

MFG BR	DRW LJT	CHK JG	UNLESS STATED OTHERWISE (DIMENSIONS IN PARENTHESIS ARE FOR REFERENCE ONLY!!!) ALL DIMENSIONS ARE IN INCHES DO NOT SCALE DRAWING TOLERANCES: FRACTIONS $\pm 1/4$
SLS DR	QA MD	$X^\circ \pm 3^\circ$	
APR G. Petersen		$X.X \pm 0.2$	
FILE CREATED IN AutoCAD 2002	3 RD	$X.XX \pm 0.10$ $X.XXX \pm 0.030$	

The **CARY COMPANY** Est. 1895

DESCRIPTION
30 GALLON OPEN HEAD DRUM
1.5 - 1.5 - 1.5 CRCQ
1A2/X235/S & 1A2/Y1.5/200

REL. DATE	PART NUM. / FILENAME	REV
-		A3