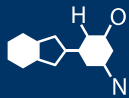


IF YOU...



MIX IT. FILL IT. PACK IT. SHIP IT.

WE HAVE A PRODUCT FOR YOU



Part #

26BY36

Dimensions

24"L x 36"W x 3"H

Pallet Pack

22 ea.

Model

272069

Weight

24 lbs.

Load Capacity

1,200 lbs.

Dimensions

36" x 24"



Wood Dollies

- 4 swivel casters/3" hard rubber or 4" hard plastic.
- Seasoned hardwood with flush top bolted construction.
- Optional tow handle and eye hook.
- Ships KD boxed.
- UPS shippable.
- Optional Tow Handle and Eye Hook P/N 272073

Specs

- Dolly size: 36" x 24"
- Capacity: 1,200 lbs
- Weight: 12 lbs
- 4" Casters

APP	PART NAME		DRAWN:	
	Wood Dolly		CHECKED:	
ECN & DATE	TOLERANCE UNLESS OTHERWISE SPECIFIED		APP. ENGR.	
	FRACTION	3 PLACE DECIMAL	2 PLACE DECIMAL	SCALE:
REV.	± 1/64	± .005	± .01	REV
	ANGULAR ± 1-1/2'	SHEET 1	OF 1	
	BREAK ALL SHARP EDGES AND REMOVE ALL BURRS			