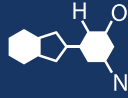


# IF YOU...



MIX IT. FILL IT. PACK IT. SHIP IT.

# WE HAVE A **PRODUCT** FOR YOU

Part #: 26BZ19

Folding Platform Trucks

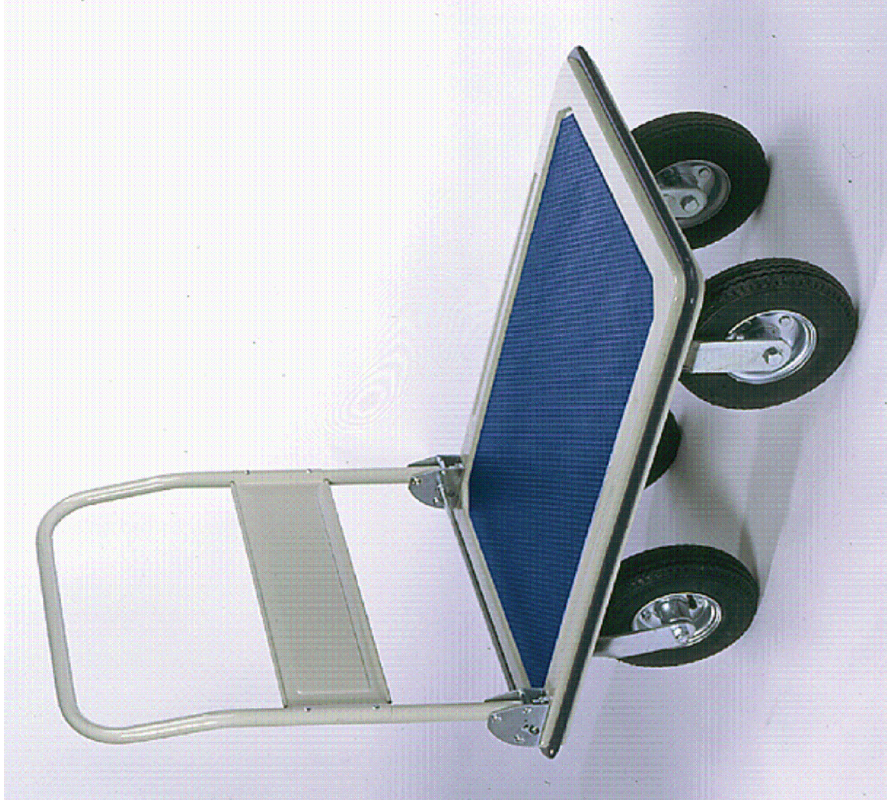
23" x 35" Steel Folding Handle Truck, 8" Pneumatic Casters, 400 lb. Capacity



The  
**CARY**COMPANY  
Est. 1895

1195 W. Fullerton Ave. | Addison, IL 60101 | T: 630.629.6600 | F: 630.629.3690 |

278762



Steel Folding Handle Trucks

- Fold down handle for easy storage.
- Enameled finish with non-skid heavy vinyl deck surface.
- Protective vinyl perimeter bumpers.
- 4" & 5" caster wheels TPR non-marking rubber.
- UPS shippable.

Specs

- Overall width: 23"
- Overall height: 38.5"
- Overall depth: 35"
- Capacity: 400 lbs
- Platform Size: 23" x 35"
- Caster Size: 8"
- Handle height: 38.5"
- Weight: 72 lbs
- 2 rigid/2 swivel casters

D

APP		ECON & DATE		REV.	
REVISIONS					
PART NAME		DRAWN:		REV	
Steel Folding Handle Trucks		CHECKED:		B- 278762	
TOLERANCE UNLESS OTHERWISE SPECIFIED		APP. ENGR.		SCALE:	
FRACTION	3 PLACE DECIMAL	2 PLACE DECIMAL	± .01		
± 1/64	± .005	± .01	SHEET 1 OF 1		
ANGULAR ± 1-1/2'					
BREAK ALL SHARP EDGES AND REMOVE ALL BURRS					

The  
**CARY**COMPANY  
 Est. 1895