

# IF YOU...



MIX IT. FILL IT. PACK IT. SHIP IT.

# WE HAVE A PRODUCT FOR YOU



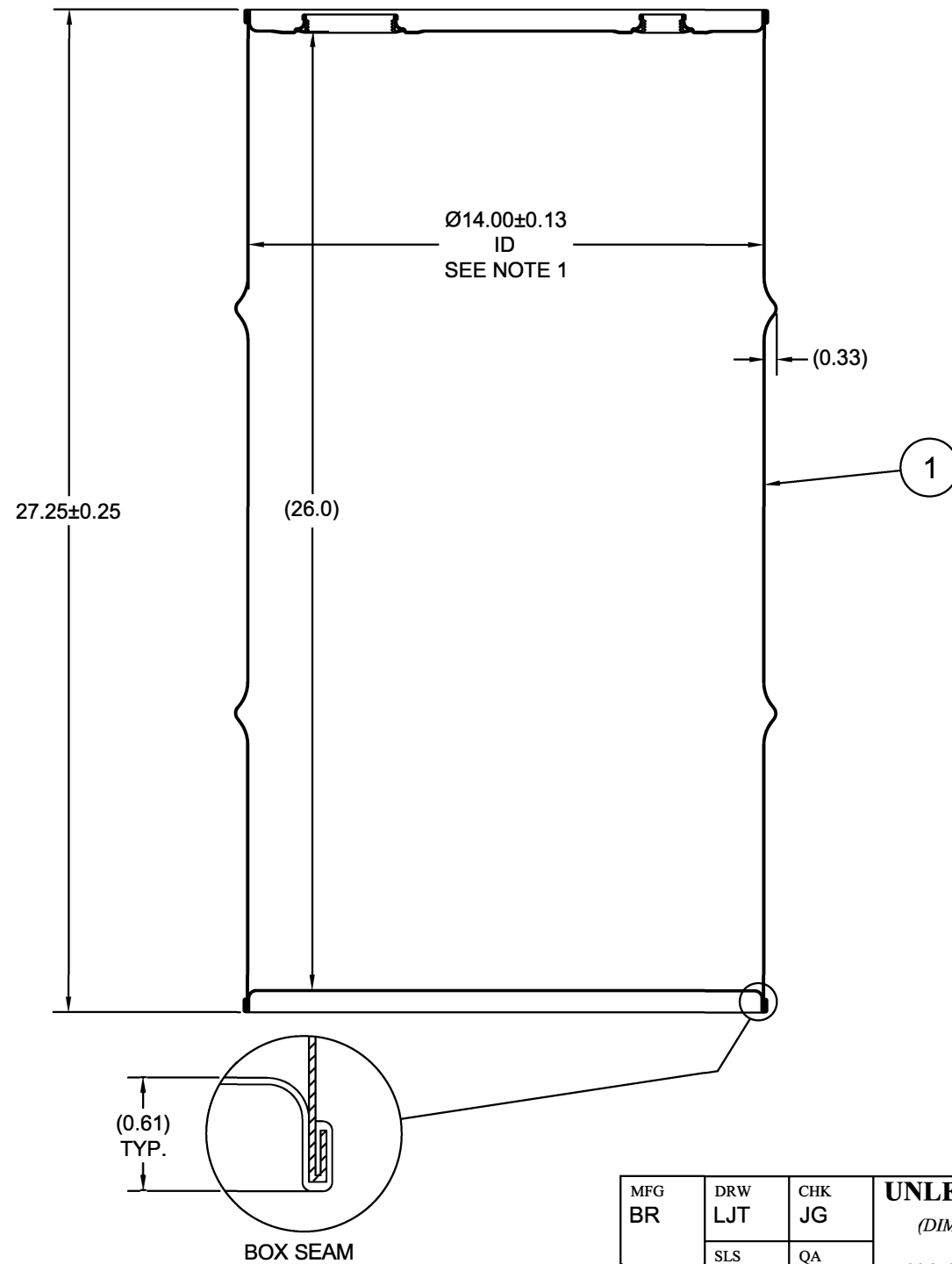
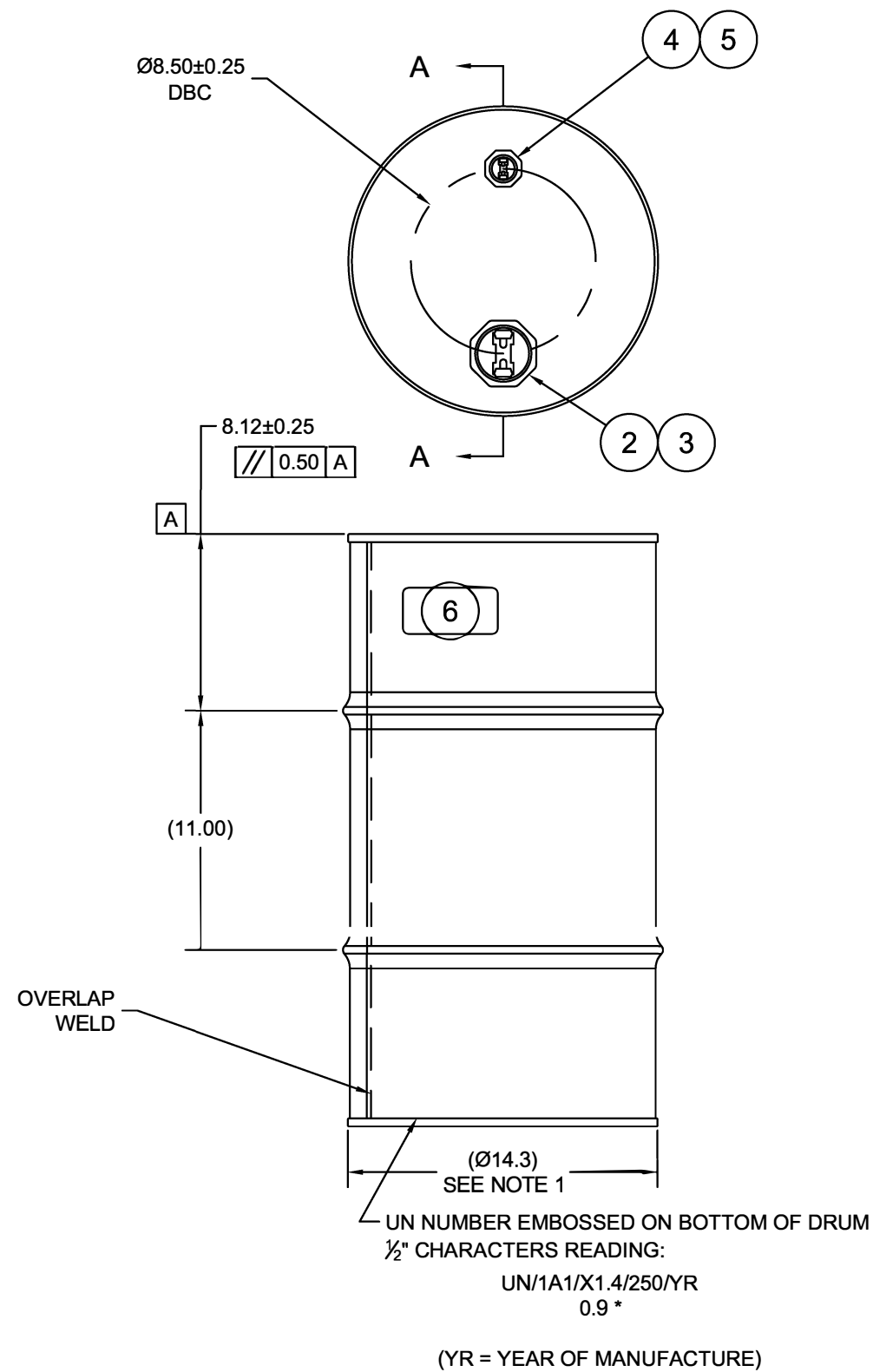
## 16 Gallon Tight Head Steel Drum, UN Rated, 2" & 3/4" Fittings

*Product Category: Salvage Drums*

Part #	26W16T
Capacity	16 gal.
Condition	New
Color	Black w/ White Cover
Material	Carbon Steel
Closure	Tight Head (Closed)
Lining	Rust Inhibitor Enamel
Steel Thickness	0.9/0.9/0.9 (Top/Body/Bottom)
Steel Gauge	20/20/20 (Top/Body/Bottom)
Fittings	2"NPT & 3/4" NPT
Gasket	Buna Gasket
Dimensions	14"Dia. x 26"H (inside) 14.3" Dia. x 27.25"H (outside)
UN Rating Liquid	UN1A1/X1.4/250

ECN # or INIT	REV	DESCRIPTION	DATE
OE-005	A1	REDRAWN TO AutoCAD	06-DEC-2012
OE-013	A2	CORRECTED HOOP PROFILE	19-APR-2013

**SECTION A-A  
(SHOWN W/ PLUGS REMOVED)**



**NOTES:**

1. TO DETERMINE GREATER ACCURACY OF ANY DIAMETRIC DIMENSION, MEASURING OF CIRCUMFERENCE IS REQUIRED
2. CONSTRUCTION per 49 CFR §178.504 (b)

**MATERIAL:**

1. DRUM BODY AND COVER CRCQ CARBON STEEL PER ASTM A1008 AND ASTM A568 OR EQUIVALENT
2. MATERIAL THICKNESS 0.9mm (0.0319 - 0.0370, 20 GAUGE)

**FINISH:**

1. DRUM BODY EXTERIOR PAINTED BLACK (LQ10003)  
COVER EXTERIOR PAINTED WHITE (LQ10020)

ITEM	P/N	DESCRIPTION	QTY
6		UN DURABLE LABEL	1
5	PT3000	PLUG 3/4 TS BUNA GASKET	1
4	FT3000	FLANGE 3/4 TS BUNA GASKET	1
3	PT2000	PLUG 2 TS BUNA BASKET	1
2	FT2000	FLANGE 2 TS BUNA GASKET	1
1		BODY/BOTTOM 16 GALLON DRUM 14.0 ID	1

BEST PRINTED ON B-SIZE PAPER

(YR = YEAR OF MANUFACTURE)

TARE WEIGHT:  
17 lbs

THE USE OF INFORMATION  
CONTAINED HEREIN IS RESTRICTED

MFG BR	DRW LJT	CHK JG
SLS DR	QA MD	
Petersen		
FILE CREATED IN AutoCAD 2002	3 <sup>RD</sup>	

**UNLESS STATED OTHERWISE**

(DIMENSIONS IN PARENTHESIS ARE FOR  
REFERENCE ONLY!!!)

ALL DIMENSIONS ARE IN INCHES  
DO NOT SCALE DRAWING

TOLERANCES:  
FRACTIONS ±1/4  
X° ± 3°  
X.X ± 0.2  
X.XX ± 0.10  
X.XXX ± 0.030

The  
**CARY COMPANY**  
Est. 1895

DESCRIPTION  
16 GALLON TIGHT HEAD DRUM  
0.9 - 0.9 - 0.9 CRCQ STEEL  
1A1/X1.4/250

REL. DATE -	PART NUM. / FILENAME CQ1603	REV A2
----------------	--------------------------------	-----------