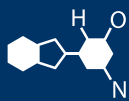


# IF YOU...



MIX IT. FILL IT. PACK IT. SHIP IT.

# WE HAVE A **PRODUCT** FOR YOU

Part # 26W41F

Fiber Drums

41 Gallon Fiber Drum, Steel Cover w/  
Lever Lock Ring



The  
**CARY**COMPANY  
Est. 1895

1195 W. Fullerton Ave. | Addison, IL 60101 | T: 630.629.6600 | F: 630.629.3690 | [TheCaryCompany.com](http://TheCaryCompany.com)

LOC RIM DRUM SPECIFICATION SHEET

MANUFACTURING FACILITY: Chicago  
 DATE: November 14, 2018

TCC SPEC	(211XXX)	21-41-300 LR Gd
GALLON CAPACITY		41
INSIDE DIMENSIONS	(DIAMETER X HEIGHT)	21 ½" x 26"
OUTSIDE DIMENSIONS	(DIAMETER X HEIGHT)	22 ¾" x 27"
TARE WEIGHT		13.3 lbs. (Approx.)
SIDEWALL	GRADE	56# Linerboard
	ADHESIVE	Sodium Silicate
	LINING/BARRIER	N/A
	PLYS	6 Plys Total
	TEST	800 psi
PACKAGING WEIGHT LIMIT		300 lbs.
BOTTOM HEAD ELEMENT	TYPE	Laminated Fiber
	CALIPER	0.142"
	MULLEN	1,000 psi
	LINING/BARRIER	N/A
BOTTOM CHIME	TYPE	Steel
	GAUGE	26 Ga.
	FINISH	Electro Galvanized
COVER OR TOP HEAD	TYPE	Steel
	CALIPER/GAUGE	26 Ga.
	MULLEN/FINISH	Gold Lacquer
TOP CHIME	TYPE	Steel
	GAUGE	26 Ga.
	FINISH	Electro Galvanized
CLOSURE	TYPE	Loc Ring (Steel)
	GAUGE	26 Ga.
	FINISH	Various
	LOCK	Various
CAPACITY IN CUBIC INCHES		9,471
CAPACITY IN CUBIC FEET		5.48
ADDITIONAL FEATURES		N/A

Heights are nominal and can vary ±¼"