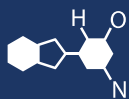


IF YOU...



MIX IT. FILL IT. PACK IT. SHIP IT.

WE HAVE A **PRODUCT** FOR YOU

Part #: 26WR84

Tight Head Reconditioned Steel Drums

55 Gallon Light Blue Tight Head Steel Drum, Reconditioned,
UN Rated, 2" & 3/4" Fittings, Lined



The
CARYCOMPANY
Est. 1895

1195 W. Fullerton Ave. | Addison, IL 60101 | T: 630.629.6600 | F: 630.629.3690 |

Drum Dimension

Form 303

Description: Tight Head Drum

Over All Height:	34.3/4	+ - 3/16	
Over All Diameter:	23"		
Weight:	.8	31	Lbs.+ - 1Lbs.
	.9/.8/.9	31	Lbs.+ - 1Lbs.
	1.1/.8/1.1	33	Lbs.+ - 1Lbs.
	1.1/.9/1.1	35	Lbs.+ - 1Lbs.
	1.2/.8/1.2	34	Lbs.+ - 1Lbs.
	1.2/.9/1.2	36	Lbs.+ - 1Lbs.
	1.1	40	Lbs.+ - 1Lbs.
	1.2/1.1/1.2	42	Lbs.+ - 1Lbs.
	1.2	45	Lbs.+ - 1Lbs.
	1.4/1.3/1.4	49	Lbs.+ - 1Lbs.
	1.4	52	Lbs.+ - 1Lbs.

Max Volume Capacity: 57.2
 Max Weight Capacity: 882 Lbs

