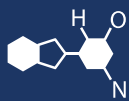


IF YOU...



MIX IT. FILL IT. PACK IT. SHIP IT.

WE HAVE A **PRODUCT** FOR YOU

Part #: 26WRG8

Open Head Reconditioned Steel Drums

55 Gallon Coleman Blue Steel Drum, Reconditioned,
UN Rated, Lined, Cover w/Bolt Ring, 2" & 3/4" Fittings



The
CARYCOMPANY
Est. 1895

1195 W. Fullerton Ave. | Addison, IL 60101 | T: 630.629.6600 | F: 630.629.3690 |

Drum Dimension

Form 302

Description: 3 Hoop 17-H Drum

Over All Height:	34 1/2"			+ - 1/8
Over All Diameter:	24"			+ - 1/8
Weight:	0.9	37		+ - 1 Lbs.
	1.1	44		+ - 1 Lbs.
	1.2	48		+ - 1 Lbs.
	1.0/1.1/1.2	45		+ - 1 Lbs.
	1.1/.8/9	36		+ - 1 Lbs.
	1.1/.8/1.1	37		+ - 1 Lbs.
	1.1/.9/1.1	39		+ - 1 Lbs.
	1.2/.9/1.2	40		+ - 1 Lbs.
	1.2/1.1/1.2	46		+ - 1 Lbs.
	1.4/1.1/1.2	47		+ - 1 Lbs.
	1.4/1.3/1.4	56		+ - 1 Lbs.

Max Volume Capacity: 57.2

