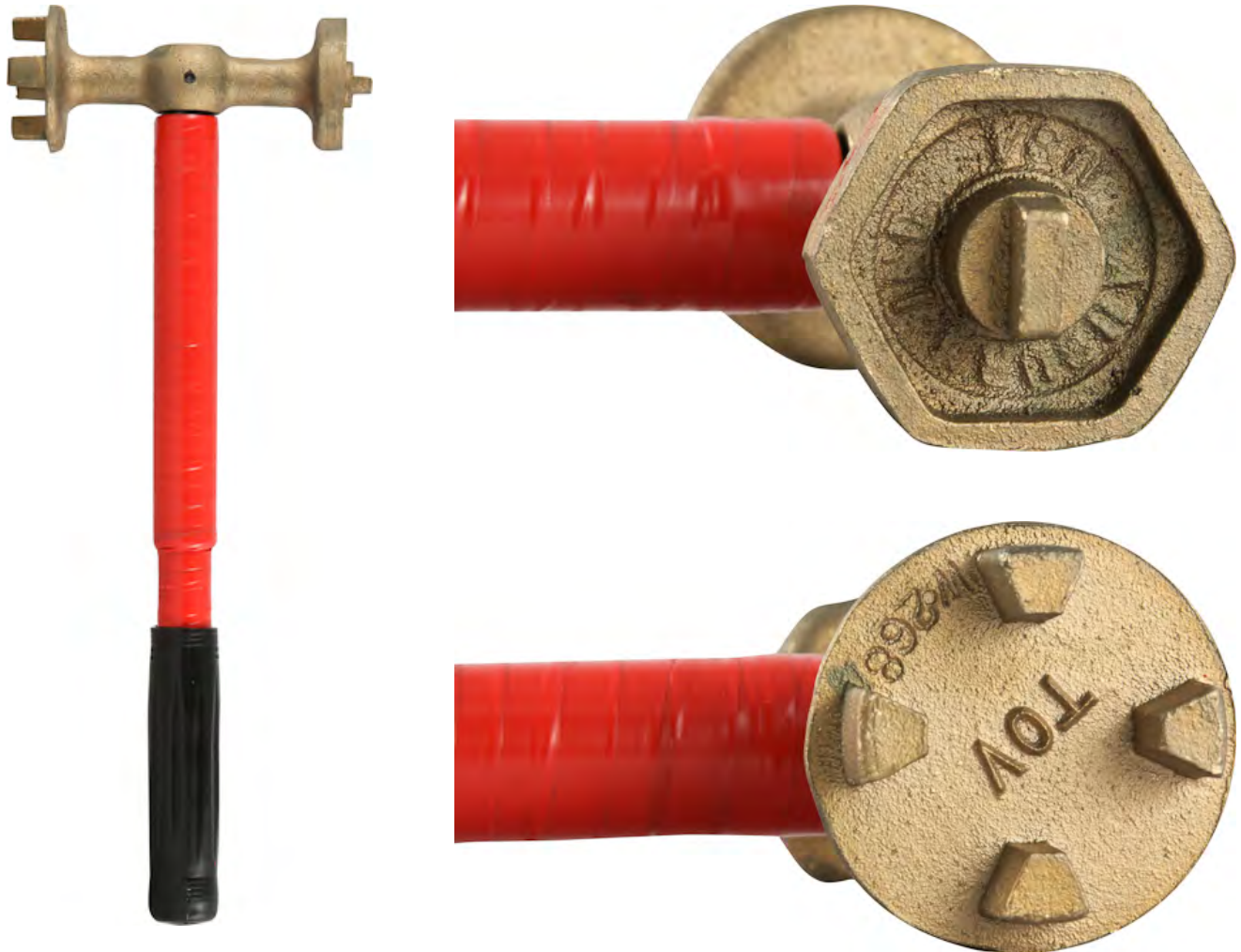


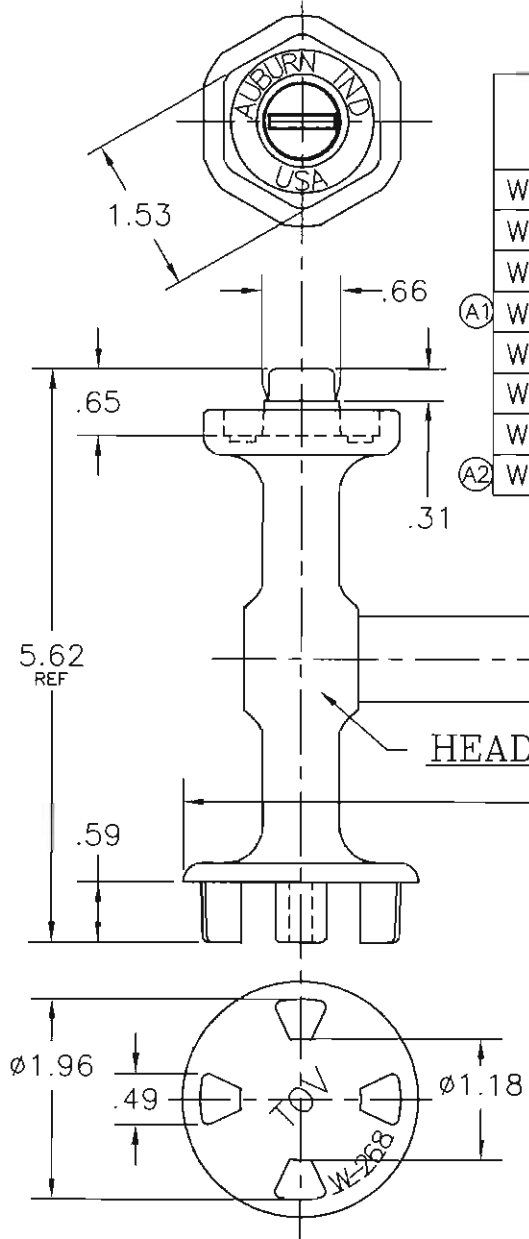
Part#: 26WSPR



Part #	Description
26WSPR	W-268SPT RIEKE RED 30/15 SPARKLESS PRESET TORQUE WRENCH



Supplied By: **The Cary Company**  
Ph: 630-629-6600  
[www.thecarycompany.com](http://www.thecarycompany.com)



DETAIL #	COLOR	HEAD MATERIAL	HANDLE	TORQUE +15%/-10% (FT-LBS)	"A" ±.25
W0268	GREEN	CAST IRON	PIPE	----	13.75
W0268-PT-01	YELLOW	CAST IRON	PRESET TORQUE W/RUBBER	20/9	14.50
W0268-PT-02	RED	CAST IRON	PRESET TORQUE W/RUBBER	30/15	14.50
(A1) W0268-PT-04	BLACK	CAST IRON	PRESET TORQUE W/RUBBER	9/5	14.50
W0268-S	BRONZE/BLACK	BRONZE SPARKLESS	PIPE, TAPED	----	13.50
W0268-SPT-01	BRONZE/YELLOW	BRONZE SPARKLESS	PRESET TORQUE TAPED W/RUBBER	20/9	14.25
W0268-SPT-02	BRONZE/RED	BRONZE SPARKLESS	PRESET TORQUE TAPED W/RUBBER	30/15	14.25
(A2) W0268-SPT-04	BRONZE/BLACK	BRONZE SPARKLESS	PRESET TORQUE TAPED W/RUBBER	9/5	14.25

(A3)

3/4" PLUGS	2" PLUGS	
PPA-10-2	PPA-51	PPN-51
PPA-11	PPA-53	PPN-51-F
PPN-31	PPA-53-B-5	PPN-61
S-200	PPA-55	PPN-71
T-200	PPA-56	S-250
	PPA-57	T-250
	PPA-57-B-5	

PRODUCT DRAWING

Rieke® Corporation — Auburn, Indiana

BREAK ALL SHARP EDGES WITH 1/64" RADIUS, UNLESS OTHERWISE SPECIFIED	DATE	DRAWN BY				
	21-DEC-00	ARK				
THE FOLLOWING TOLERANCES APPLY UNLESS OTHERWISE SPECIFIED:	1.60 SCALE	CHECKED				
		JLH				
ANGLES	±1/4°	APPROVED	A	1&2) ADD WRENCHES WITH 9/5 FT-LBS TORQUE. 3) UPDATE SPARKLESS TAPING CODE	12-18-13	JLH
HUNDRETH	±.015	CHANGE NUMBER		CHANGE	DATE	BY
THOUSANDTH	±.002					

DETAIL NAME		TOV WRENCH	
TOOL ASSY. NAME		TOV PRONG STYLE WRENCH	
PRODUCT	3/4 & 2" TOV PLUGS	TOOL ASS'Y NUMBER	W0268
DRAWING NUMBER	24000100	DETAIL NUMBER	SEE CHART
FOR		MATERIAL	SEE CHART
		TEMPER	