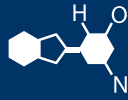


# IF YOU...



MIX IT. FILL IT. PACK IT. SHIP IT.

# WE HAVE A **PRODUCT** FOR YOU

Part # 26WSS5

Open Head Stainless Steel Drums

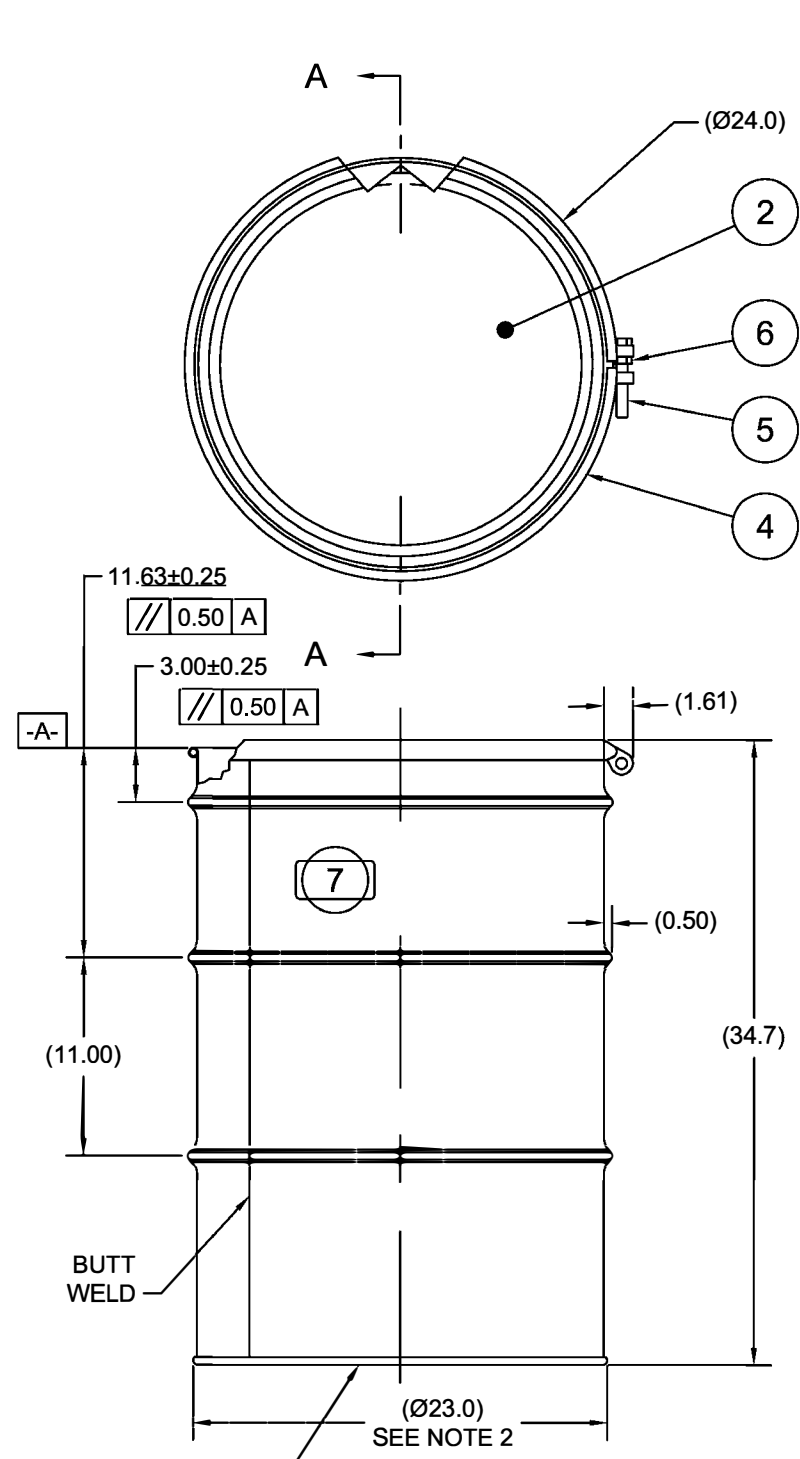
55 Gallon Stainless Steel Drum, UN Rated,  
Cover w/Bolt Ring



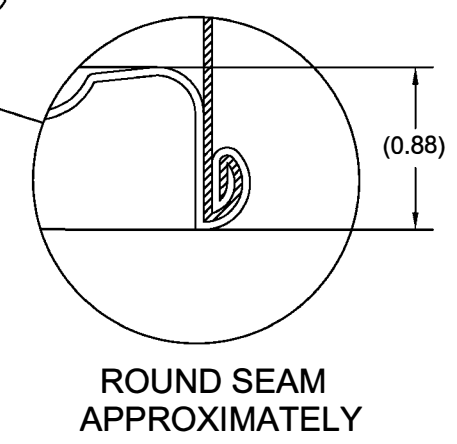
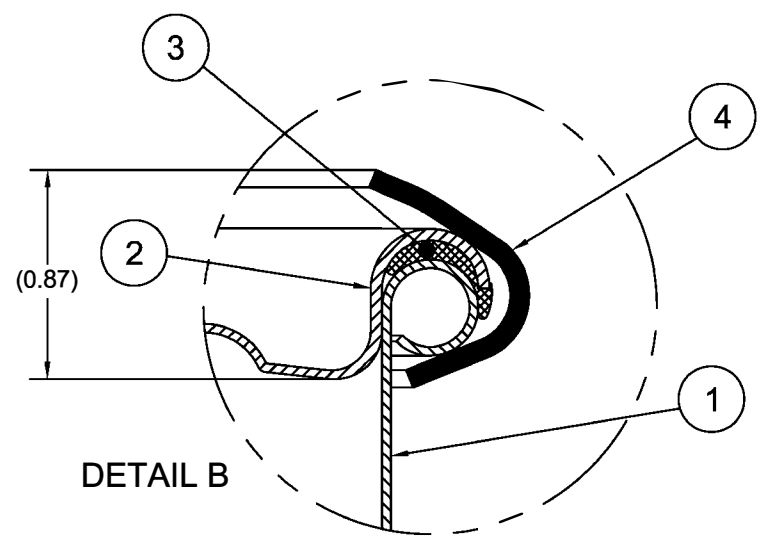
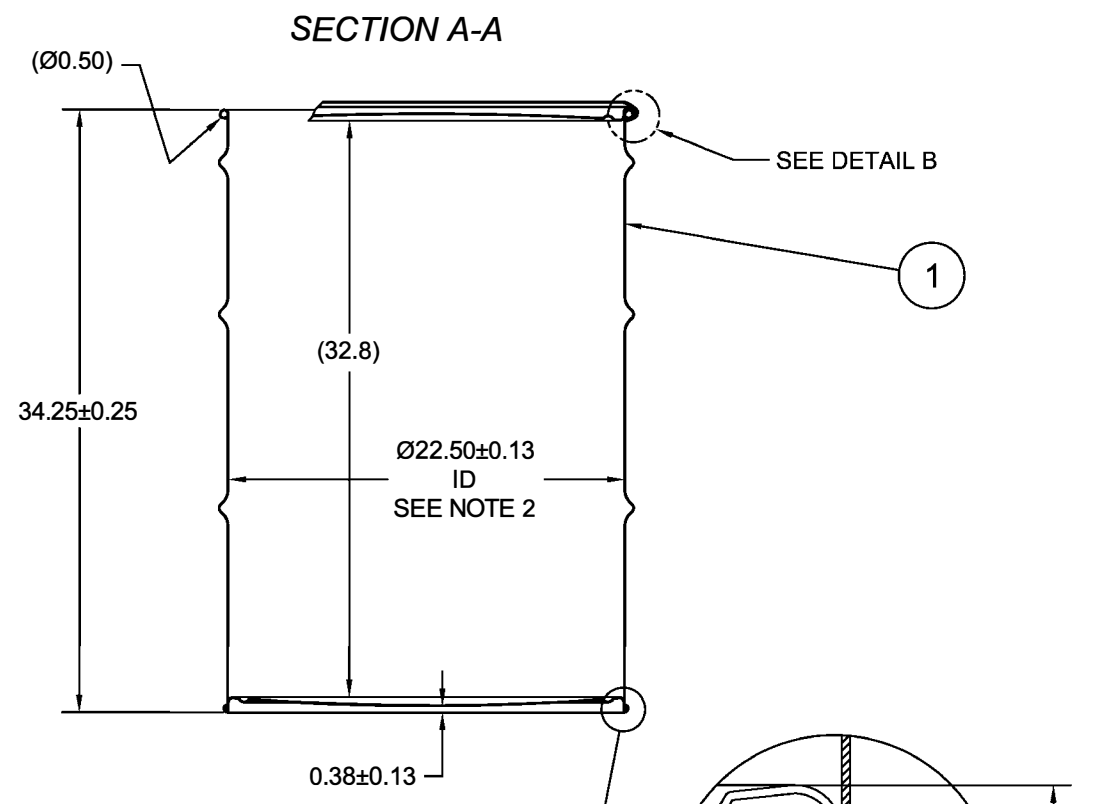
The  
**CARY**COMPANY  
Est. 1895

1195 W. Fullerton Ave. | Addison, IL 60101 | T: 630.629.6600 | F: 630.629.3690 | [TheCaryCompany.com](http://TheCaryCompany.com)

ECN # or INIT	REV	DESCRIPTION	DATE
OE-005	A1	REDRAWN TO AutoCAD	09-APR-2010
OE-001	A2	CLERICAL ERROR	18-APR-2013



UN NUMBER EMBOSSED ON BOTTOM OF DRUM  
 1/2" CHARACTERS READING:  
 UN/1A2/X440/S/YR  
 UN/1A2/Y1.5/150/YR  
 1.5 - 1.2 - 1.2 \* 304  
 (YR = YEAR OF MANUFACTURE)



- 304SS PER ASTM A240 OR EQUIVALENT
- MATERIAL THICKNESS: COVER 1.5mm (0.0543 - 0.0590; 16 GAUGE), BODY/BOTTOM 1.2mm (0.0433 - 0.0480; 18 GAUGE)
- GASKET MAT'L PER ASTM D1056
- BOLT RING CARBON STEEL

**FINISH:**  
 1. PASSIVATED INNER AND OUTER SURFACE OF BODY WELD SEAM

ITEM	P/N	DESCRIPTION	QTY
7		UN DURABLE LABEL	1
6	NT5800	5/8-11UNC HEX JAM NUT	1
5	BT5840	5/8-11UNC X 4in LONG HEX HED BOLT	1
4	RBH2212	BOLT RING (HP) 55G 12GA 5/8 LUG	1
3	GE5500	GASKET IN-COVER D EPDM	1
2	P2215S	COVER 22.5 ID	1
1		BODY/BOTTOM 55 GALLON DRUM 22.5 ID	1

MFG JR	DRW LJT	CHK BL	<b>UNLESS STATED OTHERWISE</b> (DIMENSIONS IN PARENTHESIS ARE FOR REFERENCE ONLY!!!) ALL DIMENSIONS ARE IN INCHES DO NOT SCALE DRAWING TOLERANCES: FRACTIONS ±1/4      X° ± 3° X.X ± 0.2 X.XX ± 0.10 X.XXX ± 0.030		
SLS	QA MD	DESCRIPTION 55 GALLON OPEN HEAD DRUM 1.5 - 1.2 - 1.2 304SS 1A2/X440/S & 1A2/Y1.5/150			
APR G. Petersen	FILE CREATED IN AutoCAD 2002	3 <sup>RD</sup>		REL. DATE 09-	PART NUM. / FILENAME

TARE WEIGHT:  
50 lbs