

IF YOU...

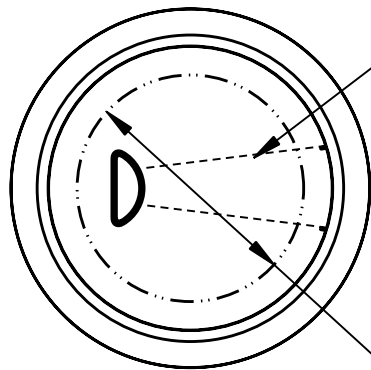


MIX IT. FILL IT. PACK IT. SHIP IT.

WE HAVE A PRODUCT FOR YOU



Part #	26WTE3
Neck Width	3/4"
Drum Type	Poly Drums, Steel Drums
Color	White
Material	Steel
Case Pack	1,000 ea.
Pallet Pack	36,000 ea. (36 Cases)
Model	Rieke® X-5

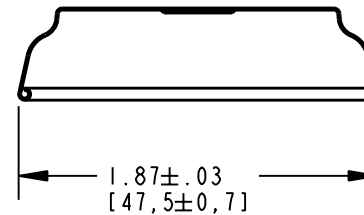
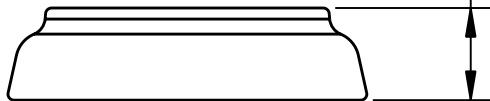


SCORE MARKS ON UNDERSIDE OF PART

Ø 1.18 AVAILABLE FOR PRINTING
[30,0]

MATERIAL:
BLACK PLATE STEEL,
FINISH:
LITHOGRAPHED COATED TOP SIDE
LACQUER COATED OPPOSITE SIDE

.48 ± .03
[12,2 ± 0,7]



SECTION A-A

CUSTOMER DRAWING



Supplied By: The Cary Company
Ph: 630-629-6600
www.thecarycompany.com

BREAK ALL SHARP EDGES
WITH 0.4 MM RADIUS,
UNLESS OTHERWISE SPECIFIED

DATE

DRAWN BY

29-AUG-05

RDR

THE FOLLOWING TOLERANCES
APPLY UNLESS OTHERWISE
SPECIFIED:

CHECKED

ANGLES ± 1/4°

SCALE

TPK

X.XX ± .015 [0,40]

I

APPROVED

X.XXX ± .005 [0,13]

CHANGE NUMBER	CHANGE	DATE	BY

THIS DOCUMENT AND ITS CONTENTS DISCLOSE INFORMATION THAT IS PROPRIETARY TO RIEKE PACKAGING SYSTEMS. NEITHER POSSESSION OR RECEIPT OF THIS DOCUMENT, OR ITS INTENT, CONFERS OR TRANSFERS ANY RIGHT TO REPRODUCE, USE, OR DISCLOSE ANY PART OF ITS CONTENT EXCEPT BY WRITTEN AUTHORIZATION FROM RIEKE PACKAGING SYSTEMS.

TITLE		IMPROVED VISE GRIP CAP SEAL	
PRODUCT		CAP SEAL X-5	
DRAWING NUMBER		28000237	
MFG LOCATION		DETAIL NUMBER	
MATERIAL		X-5	
PLATE	TEMPER		

