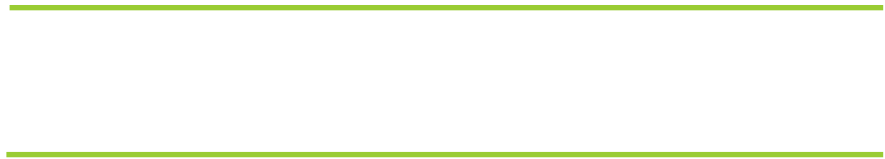


IF YOU...



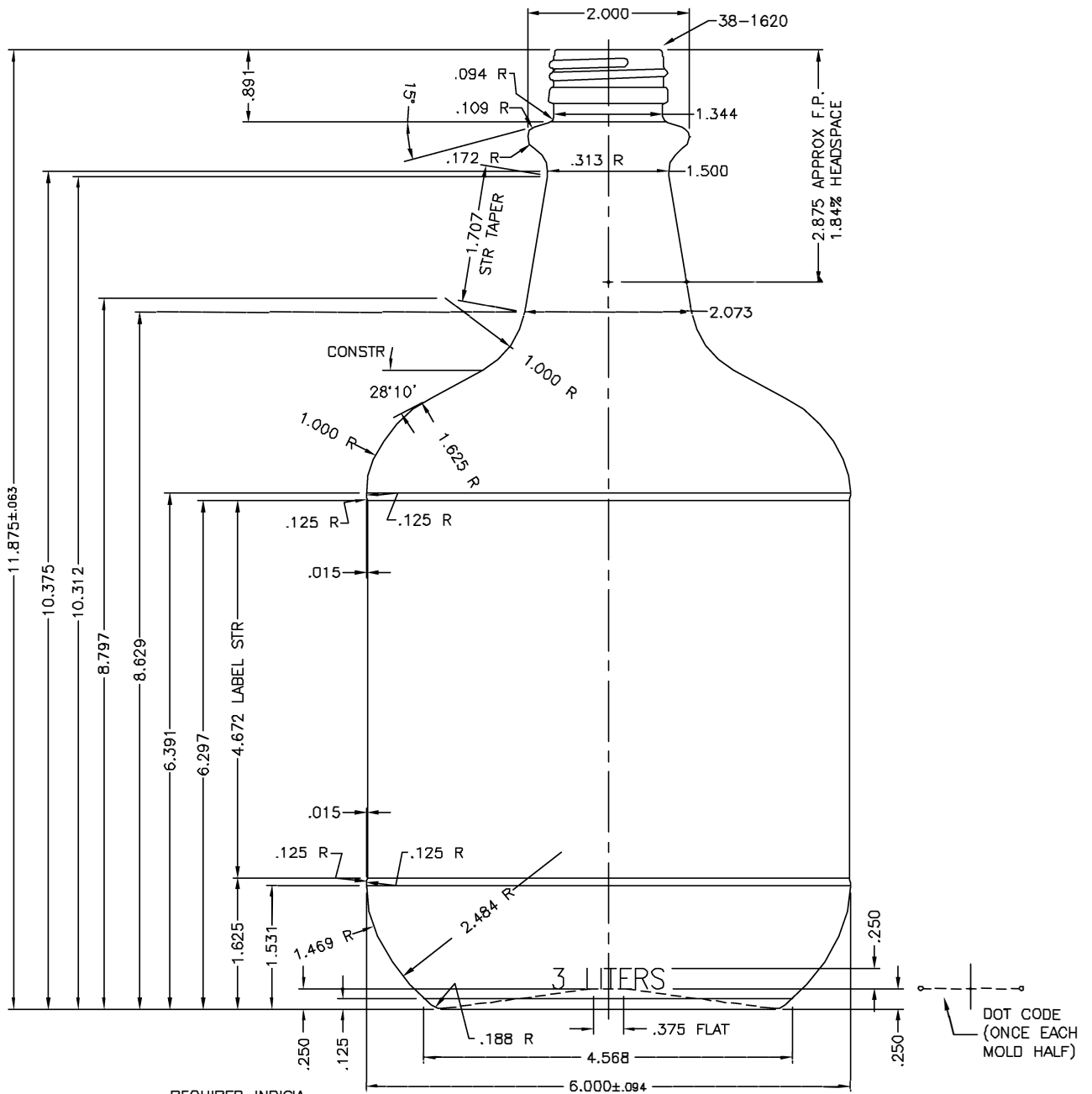
MIX IT. FILL IT. PACK IT. SHIP IT.

WE HAVE A PRODUCT FOR YOU



Part #	30B3LC
Capacity	3 Liter
Bottle Style	Beer, Growler
Color	Clear
Material	Glass
Dimensions	4.568" dia. x 11.875"H
Label Panel Dimensions	4.672"
Neck Finish	38-405
Neck Width	38mm
Case Pack	4 ea.
Case Weight	10 lbs.
Pallet Pack	336 ea. (84 Cases)
Industries	Food & Beverage
Note	Packed in a 4x1 Re-Shipper Carton





REQUIRED INDICIA
 1. TRADEMARK
 2. CAVITY NO.
 3. MOLD NO.
 PLACE ON BOTTOM
 OR HEEL.

CHAIN KNURL
 BEARING SURFACE

CAPACITY LETTERING
 ONCE EACH MOLD HALF

THIS CONTAINER IS
 NOT DESIGNED FOR
 INTERNAL PRESSURE

		DESIGNED FOR	STOCK 3 LITER WINE		The CARY COMPANY Est. 1895	
D	5/10/04	ADD MOLD# AND SHOULDER CONSTR ANGLE	KS	CAP'Y O.F. 103.31 ±.88		
C	12-9-99	WGT WAS 34.50, BODY DIA 5.988	PS	CAP'Y F.P. 101.44		
B	1-20-98	FINISH WAS DESIGNATED AS 38-1610	PS	WGT: 37.50 ±1.25	<input type="checkbox"/> PRIVATE	<input type="checkbox"/> RESTRICTED <input checked="" type="checkbox"/> GENERAL SALES
A	1-13-88	COMPUTER REDRAWN THRU REV #5, GEN UPDATE	PS	DES: VC	DWG NO. MG-786	MOULD NO. 3009101
REF.				DATE: 6-2-83		