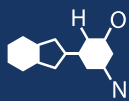


# IF YOU...



MIX IT. FILL IT. PACK IT. SHIP IT.

# WE HAVE A PRODUCT FOR YOU

Part #: 30B44W

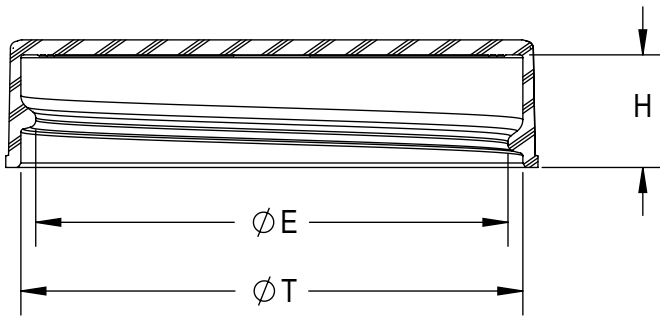
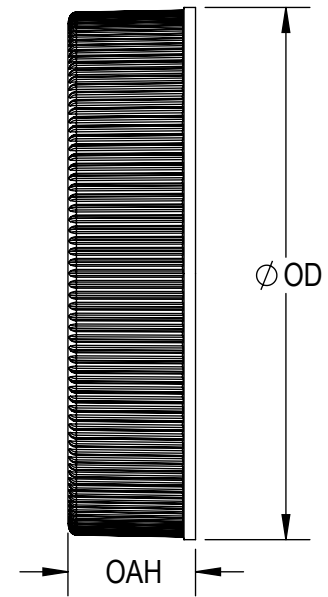
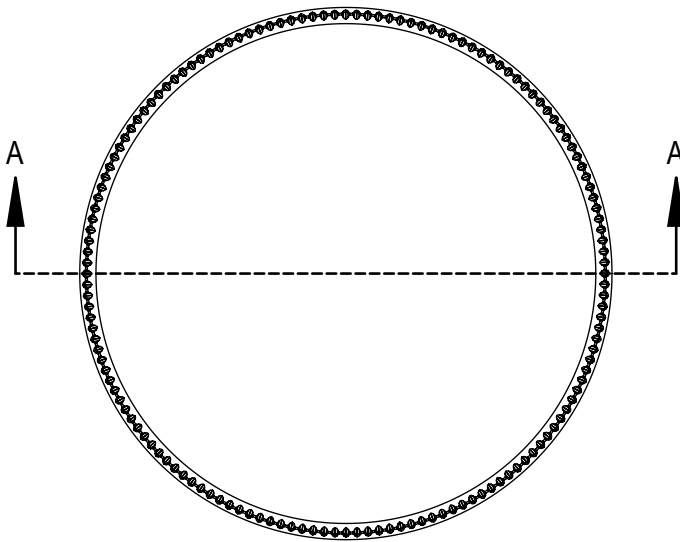
Continuous Thread Caps

45mm 45-400 White Ribbed (Matte Top)  
Plastic Cap w/HIS TE Liner for HDPE



The  
**CARY**COMPANY  
Est. 1895

1195 W. Fullerton Ave. | Addison, IL 60101 | T: 630.629.6600 | F: 630.629.3690 |



SECTION A-A

THREAD DETAIL:  
6 THREADS PER INCH, 0.167" PITCH

| REFERENCE   | TOLERANCE     | UNITS   | DIMENSION     |
|-------------|---------------|---------|---------------|
| E           | ±0.010 [0.25] | in [mm] | 1.656 [42.06] |
| T           | ±0.010 [0.25] | in [mm] | 1.752 [44.5]  |
| H           | ±0.010 [0.25] | in [mm] | 0.390[9.91]   |
| OD          | ±0.012 [0.30] | in [mm] | 1.865 [47.37] |
| OAH         | ±0.010 [0.25] | in [mm] | 0.445 [11.30] |
| PART WEIGHT | ± 0.50        | g       | 3.90          |

STATIC TORQUE RECOMMENDATION  
17-27 in-lbs  
THIS REQUIREMENT MAY VARY DEPENDING  
UPON BOTTLE MATERIAL, NECK FINISH, AND  
CAPPING EQUIPMENT

THIS MASTER DOCUMENT IS CONTROLLED  
ELECTRONICALLY. PRINTED OR DOWNLOADED COPIES  
ARE UNCONTROLLED. DOCUMENT USERS ARE  
RESPONSIBLE FOR ENSURING THEY HAVE THE LATEST  
REVISION PRIOR TO USE.

DRAWING TYPE : CUSTOMER

REPLACES DRAWINGS:  
C-5010

DIMENSIONS ENCLOSED IN ( )  
INDICATE REFERENCE  
DIMENSIONS AND NO TOLERANCE  
LIMITS ARE ESTABLISHED

TOLERANCES UNLESS OTHERWISE SPECIFIED

| DIMENSION (inches) | TOLERANCE | DIMENSION (mm) | TOLERANCE |
|--------------------|-----------|----------------|-----------|
| 0-0.787            | ±0.006    | 0-20           | ±0.152    |
| 0.788-1.181        | ±0.008    | 21-30          | ±0.203    |
| 1.182-2.756        | ±0.012    | 31-70          | ±0.305    |
| 2.757-3.937        | ±0.016    | 71-100         | ±0.406    |
| 3.938-5.096        | ±0.020    | 101-150        | ±0.508    |
| 5.097-7.874        | ±0.024    | 151-200        | ±0.610    |
| 7.875-9.843        | ±0.032    | 201-250        | ±0.813    |

ANGULAR TOLERANCE ± 2°

PROPRIETARY AND CONFIDENTIAL

The  
**CARY**COMPANY  
Est. 1895



SOLIDWORKS

DISTRIBUTION  
CODE

D

DRAWING NAME  
**45-400 CT CLOSURE**  
RMX (Ribbed Side - Matte Top)

DRAWING NUMBER  
**CQA - 10302**

MATERIAL  
**POLYPROPYLENE**

MODEL NUMBER:  
**PM 10297 45-400 CT**

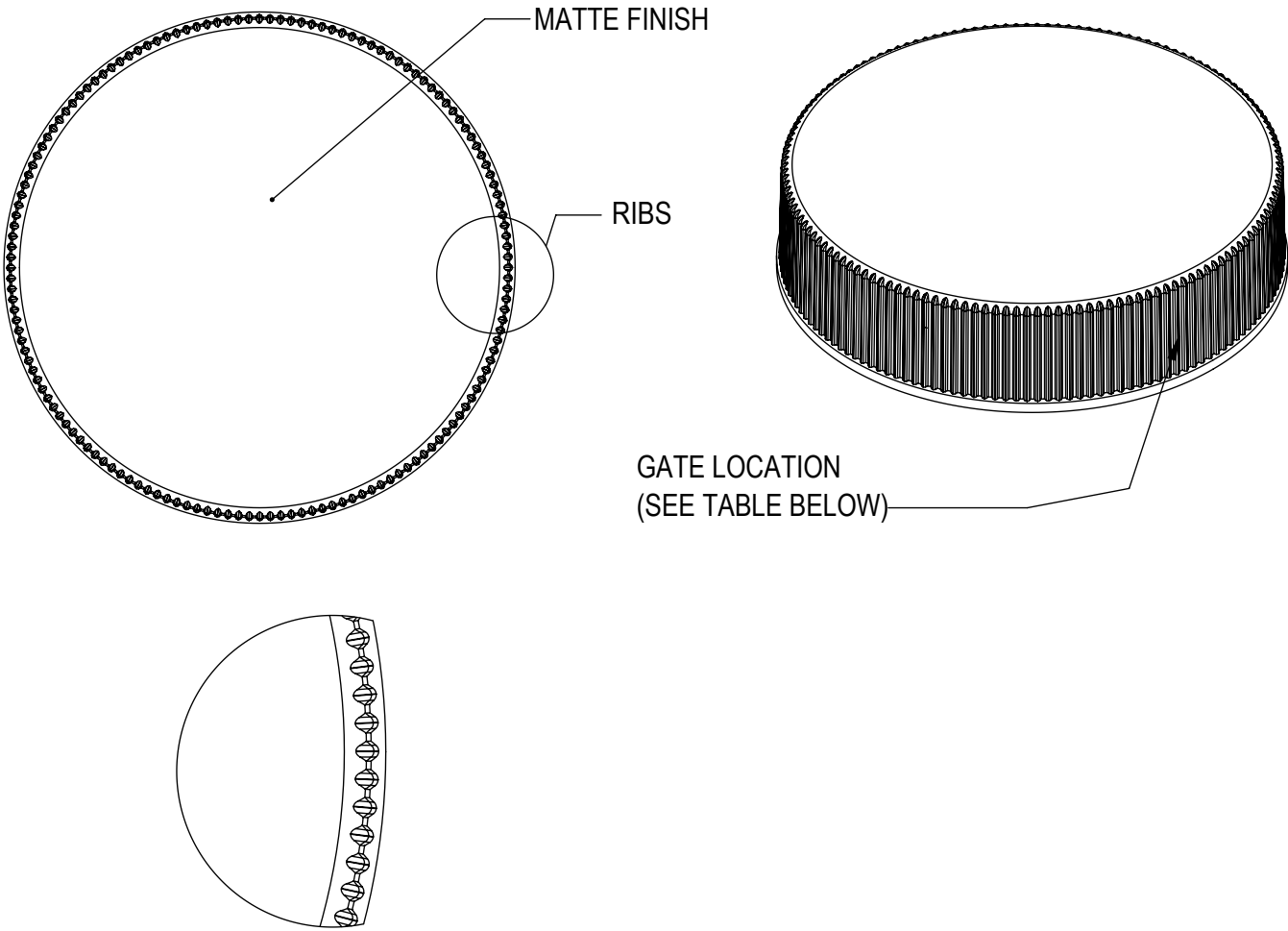
DRAWN BY: JDM 6/3/2016

ENG APPR: LES 12/20/2021

QA APPR: TEM 12/21/2021

| SCALE | SHEET SIZE | SHEET  | REV/MP |
|-------|------------|--------|--------|
| 1.5:1 | 11in*8.5in | 1 of 3 | 00.AD  |

| REVISIONS  |     |     |   |     |      |
|------------|-----|-----|---|-----|------|
| DATE       | REV | N/P | DESCRIPTION   | ENG | DRWN |
| 6/3/2016   | 00  | AA  | UPDATE DRAWING FORMAT, REFER TO C-5010 FOR REVISION HISTORY   | JDM | JDM  |
| 12/27/2016 | 00  | AB  | CORRECTED PART WEIGHT (WAS 3.6),<br>$\pm 0.012$ [0.30] OD TOLERANCE WAS $\pm 0.010$ [0.25]  | JDM | JDM  |
| 7/27/2017  | 00  | AC  | UPDATED OD TOLERANCE, T DIMENSION AND PART WEIGHT BASED ON HISTORICAL DATA, ADDED MOLD GATE LOCATION TABLE                                | BDG | DAS  |
| 12/27/2021 | 00  | AD  | CORRECT RIB COUNT NOTE TO MATCH PHYSICAL PARTS. UPDATE RECOMMENDED NECK FINISH "H" TOLERANCE FROM BILATERAL (+/-) TO RECOMMENDED MINIMUM. | LES | LES  |



148 EQUALLY SPACED RIBS  
DETAIL RIBS  
SCALE 4 : 1

| MOLD NUMBER | GATE LOCATION |
|-------------|---------------|
| 45003       | SIDE          |
| 45007       | SIDE          |

THIS MASTER DOCUMENT IS CONTROLLED ELECTRONICALLY. PRINTED OR DOWNLOADED COPIES ARE UNCONTROLLED. DOCUMENT USERS ARE RESPONSIBLE FOR ENSURING THEY HAVE THE LATEST REVISION PRIOR TO USE.

DRAWING TYPE : CUSTOMER

REFERENCES:  
45003, 45007

DIMENSIONS ENCLOSED IN ( )  
INDICATE REFERENCE  
DIMENSIONS AND NO TOLERANCE  
LIMITS ARE ESTABLISHED

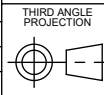
TOLERANCES UNLESS OTHERWISE SPECIFIED

| DIMENSION (inches) | TOLERANCE   | DIMENSION (mm) | TOLERANCE   |
|--------------------|-------------|----------------|-------------|
| 0-0.787            | $\pm 0.006$ | 0-20           | $\pm 0.152$ |
| 0.788-1.181        | $\pm 0.008$ | 21-30          | $\pm 0.203$ |
| 1.182-2.756        | $\pm 0.012$ | 31-70          | $\pm 0.305$ |
| 2.757-3.937        | $\pm 0.016$ | 71-100         | $\pm 0.406$ |
| 3.938-5.096        | $\pm 0.020$ | 101-150        | $\pm 0.508$ |
| 5.097-7.874        | $\pm 0.024$ | 151-200        | $\pm 0.610$ |
| 7.875-9.843        | $\pm 0.032$ | 201-250        | $\pm 0.813$ |

ANGULAR TOLERANCE  $\pm 2^\circ$

PROPRIETARY AND CONFIDENTIAL

The  
**CARY**COMPANY  
Est. 1895



SOLIDWORKS

DISTRIBUTION  
CODE  
**D**

DRAWING NAME  
**45-400 CT CLOSURE**  
RMX (Ribbed Side - Matte Top)

DRAWING NUMBER  
**CQA - 10302**

DRAWN BY. JDM 6/3/2016

MATERIAL  
POLYPROPYLENE

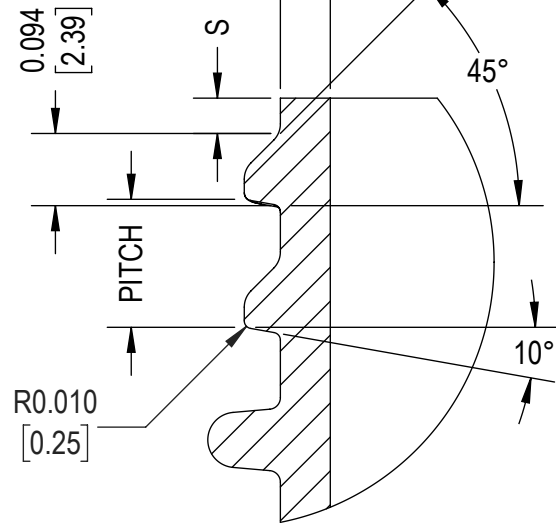
ENG APPR. LES 12/20/2021

MODEL NUMBER: PM 10297 45-400 CT

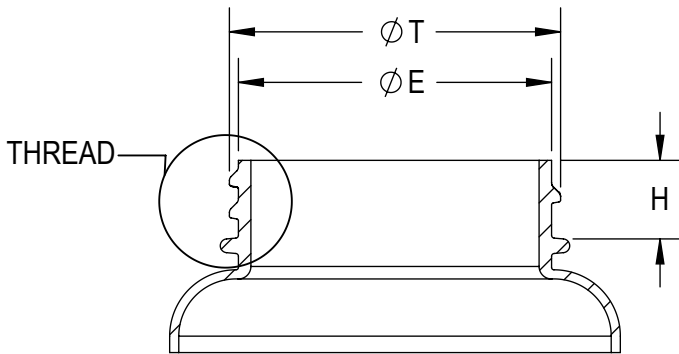
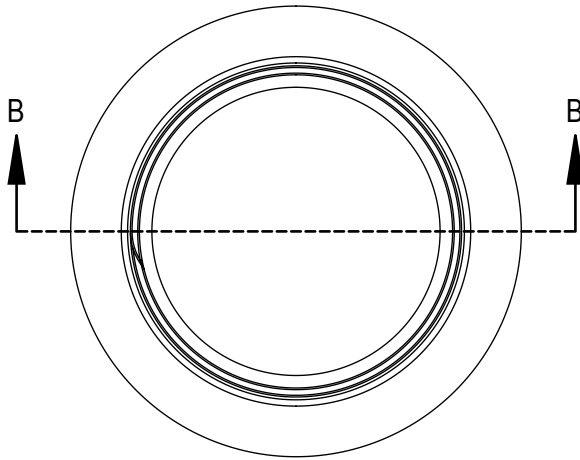
QA APPR. TEM 12/21/2021

|                        |                        |                 |                 |
|------------------------|------------------------|-----------------|-----------------|
| SCALE<br>1.5:1 & NOTED | SHEET SIZE<br>8.5 X 11 | SHEET<br>2 of 3 | REV.NP<br>00.AD |
|------------------------|------------------------|-----------------|-----------------|

0.050" [1.27mm]  
MINIMUM LAND  
FOR INDUCTION SEAL



DETAIL THREAD  
SCALE 4 : 1



SECTION B-B  
SCALE 1 : 1

| REFERENCE | TOLERANCE      | UNITS   | DIMENSION     |
|-----------|----------------|---------|---------------|
| E         | ± 0.017 [0.43] | in [mm] | 1.631 [41.43] |
| T         | ± 0.017 [0.43] | in [mm] | 1.725 [43.82] |
| S         | ± 0.015 [0.38] | in [mm] | 0.046 [1.17]  |
| H         | MINIMUM        | in [mm] | 0.400 [10.16] |
| TPI       |                |         | 6             |
| PITCH     |                | in [mm] | 0.167 [4.24]  |

NOTE: THE NOMINAL ORIENTATION ILLUSTRATED IS BASED ON NOMINAL DIMENSIONS OF BOTH THE CLOSURE AND THE RECOMMENDED NECK FINISH. FOR EXACT ORIENTATION EACH BOTTLE SHOULD BE EVALUATED ON A CASE BY CASE BASIS.

THIS MASTER DOCUMENT IS CONTROLLED ELECTRONICALLY. PRINTED OR DOWNLOADED COPIES ARE UNCONTROLLED. DOCUMENT USERS ARE RESPONSIBLE FOR ENSURING THEY HAVE THE LATEST REVISION PRIOR TO USE.

DRAWING TYPE : CUSTOMER

DIMENSIONS ENCLOSED IN ( ) INDICATE REFERENCE DIMENSIONS AND NO TOLERANCE LIMITS ARE ESTABLISHED

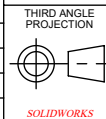
TOLERANCES UNLESS OTHERWISE SPECIFIED

| DIMENSION (inches) | TOLERANCE | DIMENSION (mm) | TOLERANCE |
|--------------------|-----------|----------------|-----------|
| 0-0.787            | ±0.006    | 0-20           | ±0.152    |
| 0.788-1.181        | ±0.008    | 21-30          | ±0.203    |
| 1.182-2.756        | ±0.012    | 31-70          | ±0.305    |
| 2.757-3.937        | ±0.016    | 71-100         | ±0.406    |
| 3.938-5.096        | ±0.020    | 101-150        | ±0.508    |
| 5.097-7.874        | ±0.024    | 151-200        | ±0.610    |
| 7.875-9.843        | ±0.032    | 201-250        | ±0.813    |

ANGULAR TOLERANCE ± 2°

PROPRIETARY AND CONFIDENTIAL

The  
**CARY**COMPANY  
Est. 1895



DISTRIBUTION  
CODE  
**D**

DRAWING NAME  
**45-400 CT CLOSURE  
RECOMMENDED NECK FINISH**  
DRAWING NUMBER  
**CQA - 10302**

DRAWN BY: JDM  
ENG APPR: LES  
QA APPR: TEM

6/3/2016  
12/20/2021  
12/21/2021

MATERIAL  
MODEL NUMBER:  
SCALE: 1:1 & NOTED  
SHEET SIZE: 8.5 X 11  
SHEET: 3 of 3  
REV/N/P: 00.AD