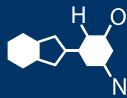


IF YOU...



MIX IT. FILL IT. PACK IT. SHIP IT.

WE HAVE A PRODUCT FOR YOU

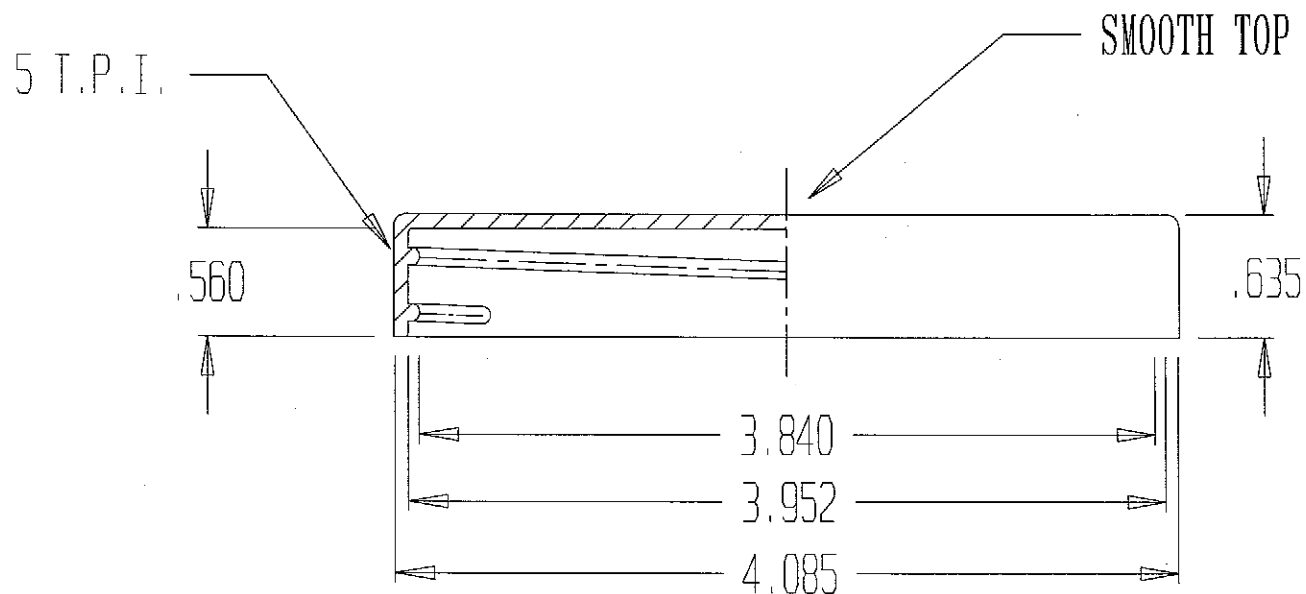


Part #	30W101
Neck Width	100 mm
Neck Finish	100-400
Cap Liner	F-217® 3-ply Co-extruded Foam Liner
Color	White
Material	PP
Case Pack	256 ea.
Pallet Pack	8,960 ea. (35 Cases)
Case Weight	14 lbs.
Case Dimensions	20.25" x 13.875" x 15.5"
FDA Approved	Yes

REVISIONS

REV.	DATE	APPROVAL	DESCRIPTION
1	04-08-03	G.G.	"E" DIMENSION
2	06-28-04	G.G.	"T", TOLERANCE

mpd
06/29/04



UNCONTROLLED

"T"	"E"	"H"	"A"	"B"
3.952	3.840	.560	4.085	.635
MATERIAL: POLYPROPYLENE				
WEIGHT: 20 GRAMS (+/- 1.5 grams)				

"S" 100 M.M./400 CAP



Supplied By: **The Cary Company**
Ph: 630-629-6600
www.thecarycompany.com

TOLERANCE: +/- .014	DRAWN BY: P.D.T.	
SCALE: FULL	DATE: 7-1-97	DRAWING NO. C-1018

SUBJECT: S-100MM-400 CAP

DOC: C-1018

REV LEVEL	REV DATE	DESCRIPTION OF CHANGE
1	Apr. 10, 2003	Drawing requires up-date. Change E = 3.840, add weight tolerance of 1.5 grams. No tooling change completed.
2	June 29, 2004	Changed tolerance to follow CMA (Closure Manufacturer Association) standard range on larger closures (+/- .014 in.).



Ph: 630-629-6600
www.thecarycompany.com



Supplied By: **The Cary Company**
Ph: 630-629-6600
www.thecarycompany.com

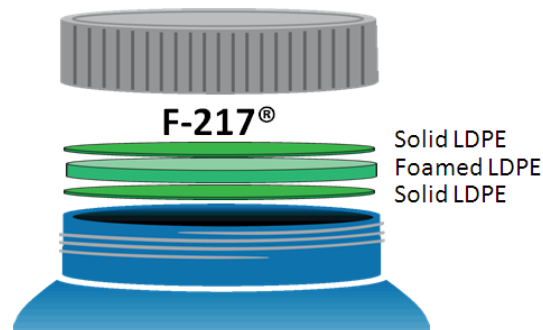
FPT300F

Homopolymer Polypropylene

- Good Mold Release, Excellent Part Finish (Low Bloom)
- Suggested Uses Include Housewares, Caps and Closures, Mugs / Cups, Thin-Walled Containers

Property	Units	Typical Value	Test Method
Nominal Melt Flow Rate (230°C/2.16kg)	g/10 min	30	ASTM D1238
Tensile Strength at Yield (2 in/min, 50 mm/min)	psi MPa	4,800 33	ASTM D638
Elongation at Yield (2 in/min, 50 mm/min)	%	10	ASTM D638
Flexural Modulus (0.05 in/min, 1.3 mm/min, 1% secant)	psi MPa	200,000 1,379	ASTM D790A
Notched Izod Impact Strength at 23°C	ft-lbs/in J/m	0.7 37	ASTM D256A
Rockwell Hardness	R	104	ASTM D785

- This data sheet describes F-217® products
- This product is a three-ply co-extruded liner consisting of a foamed Low Density Polyethylene (LDPE) core sandwiched between two layers of solid Low Density Polyethylene



MRP Description - (024)F217.035 PL

Typical Product Attributes

Construction

Structure	Solid LDPE / Foamed LDPE / Solid LDPE	Solid LDPE / Foamed LDPE / Solid LDPE
Color	White or as Specified	White or as Specified
Density		
for 20 ~ 30 mil (0,51 ~ 0,76 mm)	0,48 ± 0,03 g / cm ³	30 ± 2 lbs / ft ³
for 35 ~ 125 mil (0,89 ~ 3,18 mm)	0,40 ± 0,03 g / cm ³	25 ± 2 lbs / ft ³
Thickness Tolerance		
for 20 ~ 60 mil (0,51 ~ 1,52 mm)	± 0,127 mm	± 5 mil
for 65 ~ 90 mil (1,65 ~ 2,29 mm)	± 0,178 mm	± 7 mil
for 95 ~ 125 mil (2,41 ~ 3,18 mm)	± 0,254 mm	± 10 mil
Available Width		
for 20 ~ 60 mil (0,51 ~ 1,52 mm)	22,2 ~ 1016,0 mm	7/8 ~ 40 inch
for 65 ~ 125 mil (1,65 ~ 3,18 mm)	25,4 ~ 228,6 mm	1 ~ 9 inch
Width tolerance	± 1,6 mm	± 1/16 inch

Regulatory Compliance

FDA Compliance	21 CFR 177.1520 (Olefin Polymers) 21 CFR 177.1210 (Closures with Sealing Gaskets for Food Containers) 21 CFR 175.300 (Resinous and Polymeric Coatings)
Drug Master File (DMF)	2434
Other Compliances	USFDA Food Allergen Guidelines; California Proposition 65 Labeling Requirements; Limitations of Heavy Metals in Packaging per CONEG & EU 94/62/EC, Article 11

Original Date: 08/05/1997
Revised Date: 01/31/2011
Revision Number: 5
Revised by SR