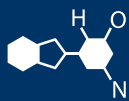


IF YOU...



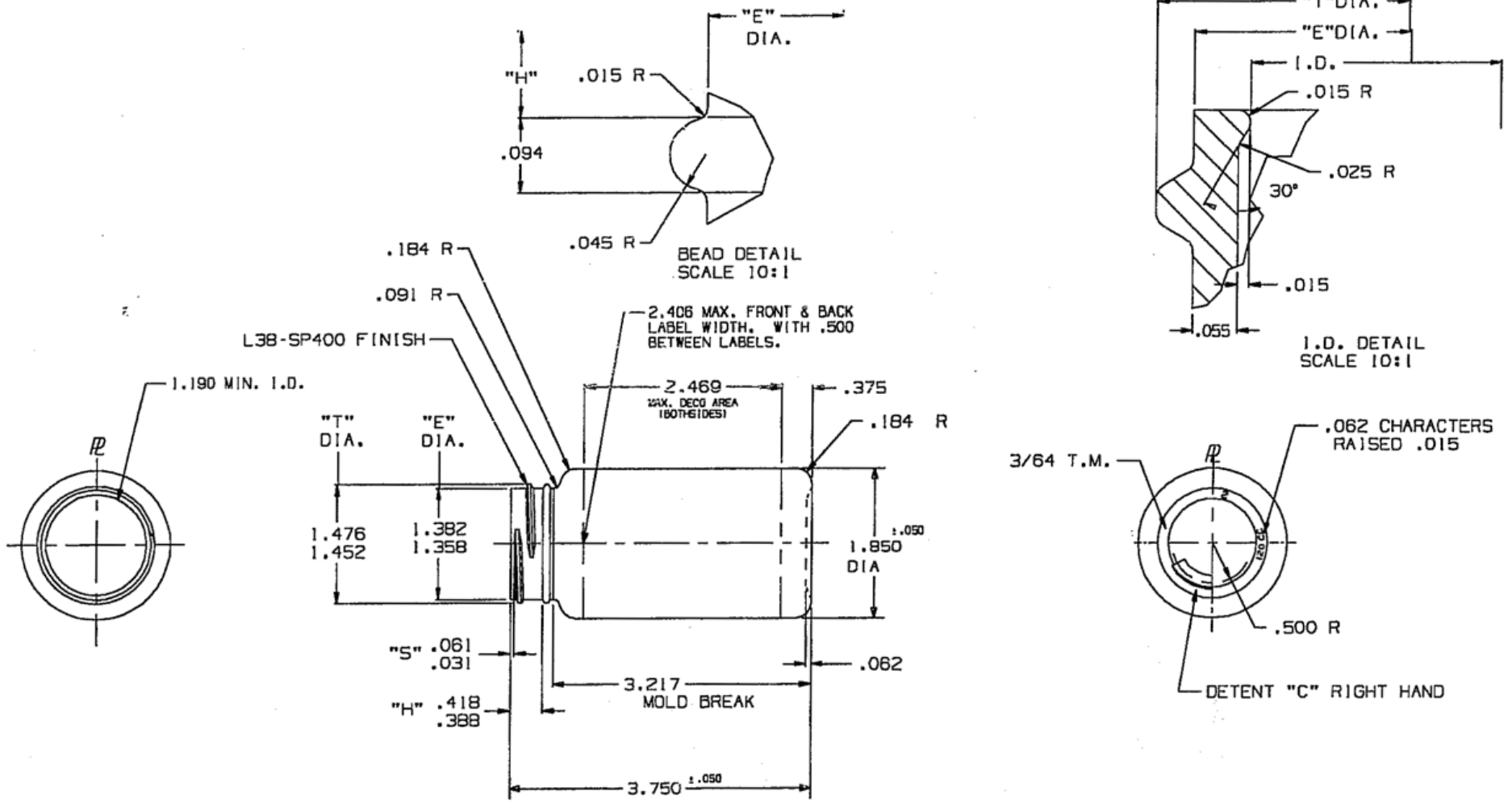
MIX IT. FILL IT. PACK IT. SHIP IT.

WE HAVE A **PRODUCT** FOR YOU

Part # 30W120

4 oz. (120cc) Natural HDPE Plastic Packer
Bottle, 38mm 38-400





NOTES :

1) OVERFLOW CAPACITY : 4.58 ± .17 FL.OZ. (135.5 ± 5.0 CC'S.)

2) WEIGHT : 14.1 ± 1.0 GRAMS

The **CARY COMPANY**
Est. 1895

Supplied By: **The Cary Company**
Ph: 630-629-6600
www.thecarycompany.com

DIMENSIONS SHOWN ARE:		DRAWN BY	MATERIAL	CUSTOMER
<input type="checkbox"/> AS MOLDED	<input checked="" type="checkbox"/> AFTER TREAT	LMT	H0PE	
<input type="checkbox"/> AFTER TREAT & DECO		DATE	CLOTE NO.	DESCRIPTION
		4/20/78		(K) 120 CC W/M ROUND
		DRG. SIZE	LAB. DRG. NO.	
		C	P-02211-01	
		IN/A	REF. DRG. NO.	
			MC-9-3971-K	
			CONT. NO.	
			SEE CHART	
		CD	CODE NO.	
		U3	SEE CHART	
		SCALE	REF. A/C	DRAWING NO. MC-9-7203-K
		FULL		

REV	ADDED LABEL DWG #/UPDATED TO STDS	DATE	APPROVED	6-11/26-1857
1				P-TD2G-1852
	REVISIONS			TOOL CHART

REV	DESCRIPTION
2	H1M65-479
1	H1M64-918
	CODE CHART