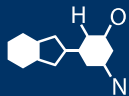
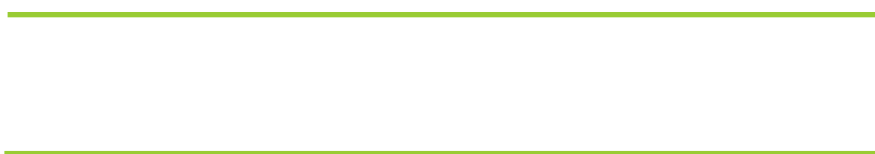


# IF YOU...



MIX IT. FILL IT. PACK IT. SHIP IT.

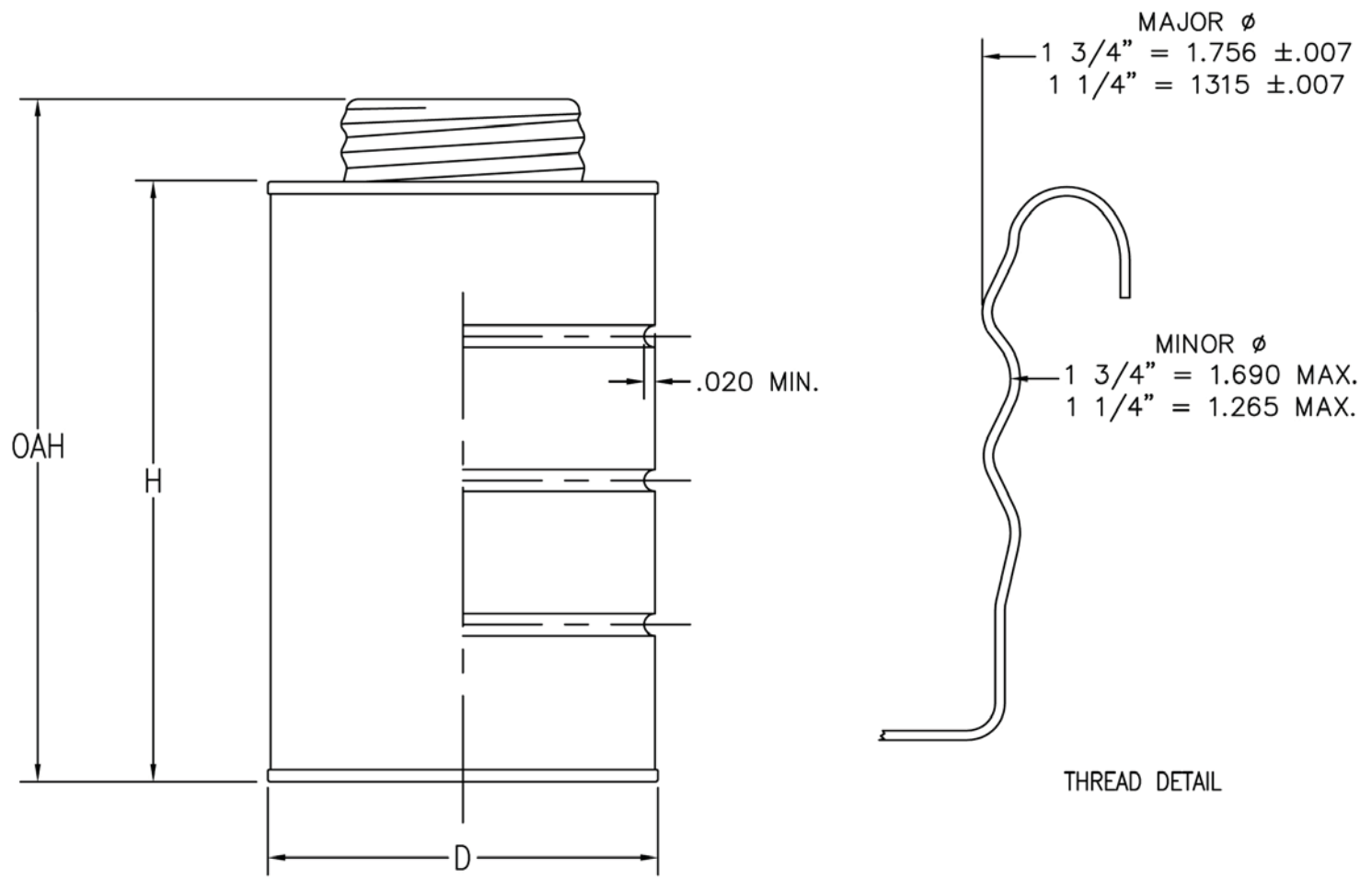
## WE HAVE A **PRODUCT** FOR YOU




Part #	30W14U
Capacity	4 oz., 1/4 Pt
Color	Silver
Material	Tin
Dimensions	2-1/8" Dia. x 2-7/8"H
Case Pack	448 ea.
Pallet Pack	8,960 ea. (20 Cases)



CAN	NOMINAL CAPACITY	D	H ±.020	OAH ±.030	THREAD DIAMETER
202 x 214	4	2.135	2.875	3.325	1 1/4" & 1 3/4"
211 x 304	8	2.640	3.240	3.680	1 3/4"
307 x 315	16	3.370	3.935	4.395	1 3/4"
404 x 414	32	4.236	4.875	5.290	1 3/4"
404x414 BEAD	32	4.236	4.857	5.272	1 3/4"




 Supplied By: **The Cary Company**  
 Ph: 630-629-6600  
[www.thecarycompany.com](http://www.thecarycompany.com)

PRODUCT DRAWING  
 ALL DIAMETERS  
 MONOTOP CANS

DRAWN BY:	SCALE	REV. BY	NO.	DATE	REVISION DESCRIPTION
CMS				6-23-2000	ECR 49-00
CHECKED BY:	DATE		B	10-4-2001	REMOVED: PLUG DIAMETER, 202 X 214 w/1" THREAD. ADDED: THREAD DETAIL, TOLERANCES ON "H" & "OAH"
WTB	11-4-98		C	3-03-2003	CHANGED THE MAJOR DIAMETER THREAD
APPROVED BY:					

LOCATION	SUPERCEDES	MATERIAL