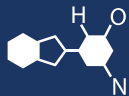


IF YOU...



MIX IT. FILL IT. PACK IT. SHIP IT.

WE HAVE A **PRODUCT** FOR YOU

Part #: 30W19B

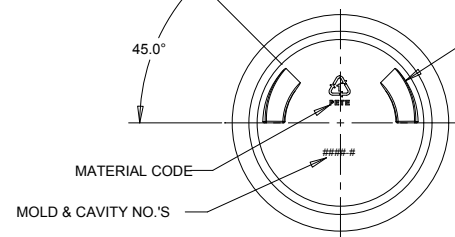
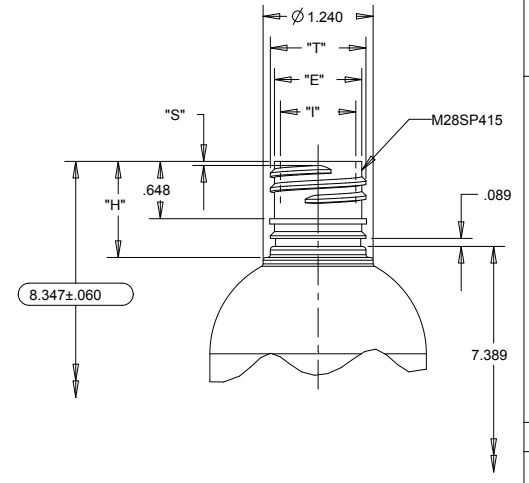
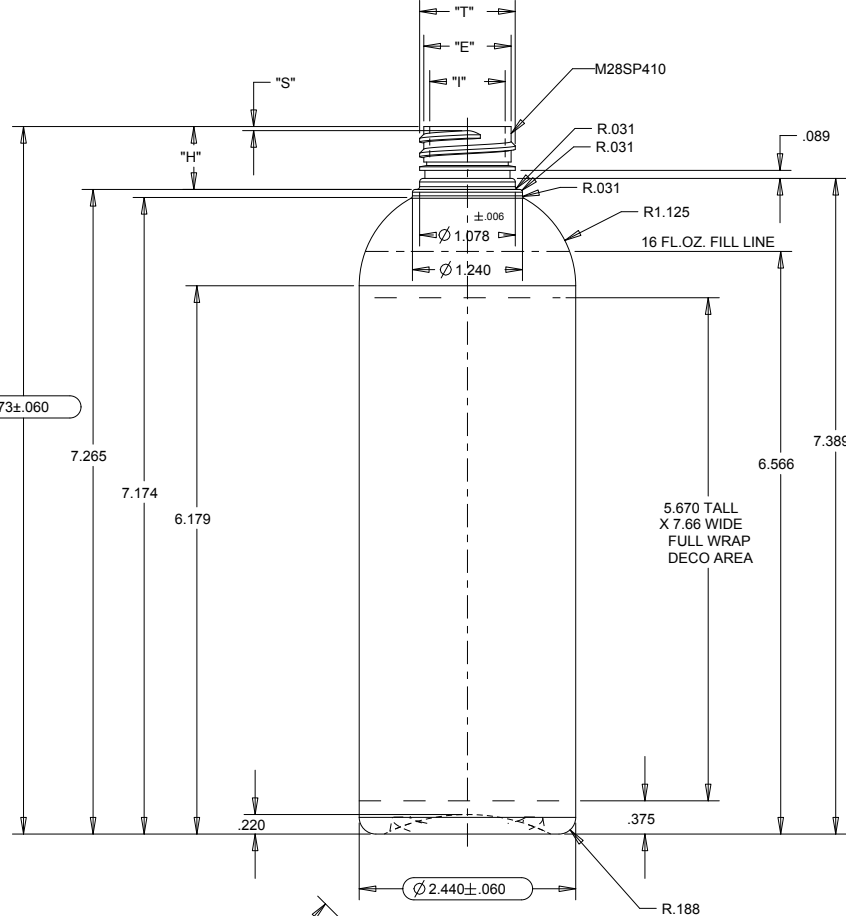
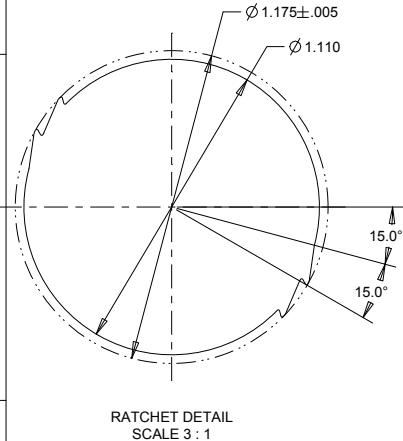
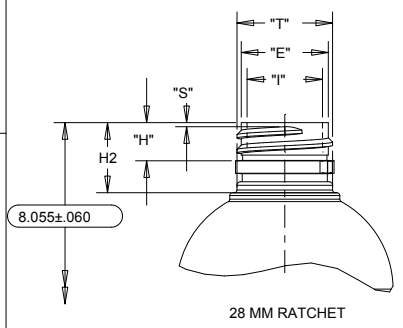


The
CARYCOMPANY
Est. 1895

1195 W. Fullerton Ave. | Addison, IL 60101 | T: 630.629.6600 | F: 630.629.3690 |

NECK FINISH	BOTTLE WEIGHT (± 1.5GR)	OVERFLOW CAPACITY (± 9.0CC)	"T" DIA	"E" DIA	"H" DIM	"H2" DIM	"S" DIM	"I" DIA	MIN WALL THICKNESS
M28SP410	36.5 31.0	511.5 515.5	1.088 1.068	.994 .974	.723 .693	---	.061 .031	.614 MIN.	.008
M28SP415	35.5	515.0	1.088 1.068	.994 .974	1.097 1.067	---	.061 .031	.614 MIN.	.008
28MM RATCHET	36.4 31.0	510.0 514.1	1.087 1.067	.991 .971	.445 .415	.805 .775	.061 .031	.614 MIN	.008

DATE	SYM	REVISION RECORD	AUTH	DR	CK
5/2/96	A	ADDED MOLD & CAVITY NO.S	1754	KW	
		WS DWG. NO. 05-01-0854			
5/21/96	B	CHANGE BSE OF NECK		KW	
10/21/97	C	ADDED MIN. WALL SPEC.			
2/26/02	D	ADDED DECO AREA		DC	
11/01/05	E	ADD RATCHET NECK FINISH		KW	
4/5/06	F	ADDED FILL LINE		DC	
1/12/09	G	28-410 36.5 GRAM WAS 36.0 GRAM		DC	
		ADDED 31.0 GRAM WEIGHT			
1/17/17	H	7.66 DECO WITH WAS 6.58		DC	
		CHANGED TO FORMAT			



MOLD NO. 1002

The
CARY COMPANY
Est. 1895

16 OZ. BULLET ROUND

FILE NAME:	SIZE:	DRAWN BY:	DWG NO.:	REV.:
model_name:0.PRT	C	KW	05-01-0084	H
16OZ_BULLET_RD-H-1002.DRW	SCALE:	FULL	DATE:	3/13/96
			SHEET:	1 OF 1