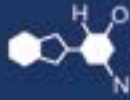


IF YOU...



MIX IT. FILL IT. PACK IT. SHIP IT.

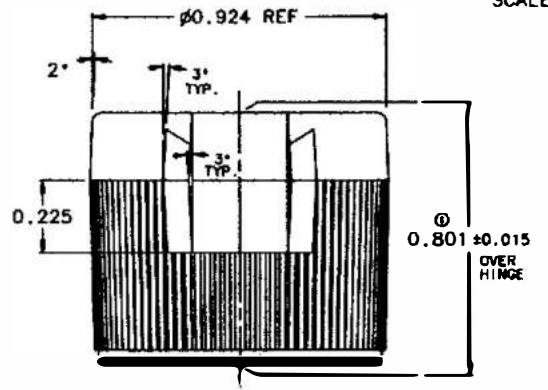
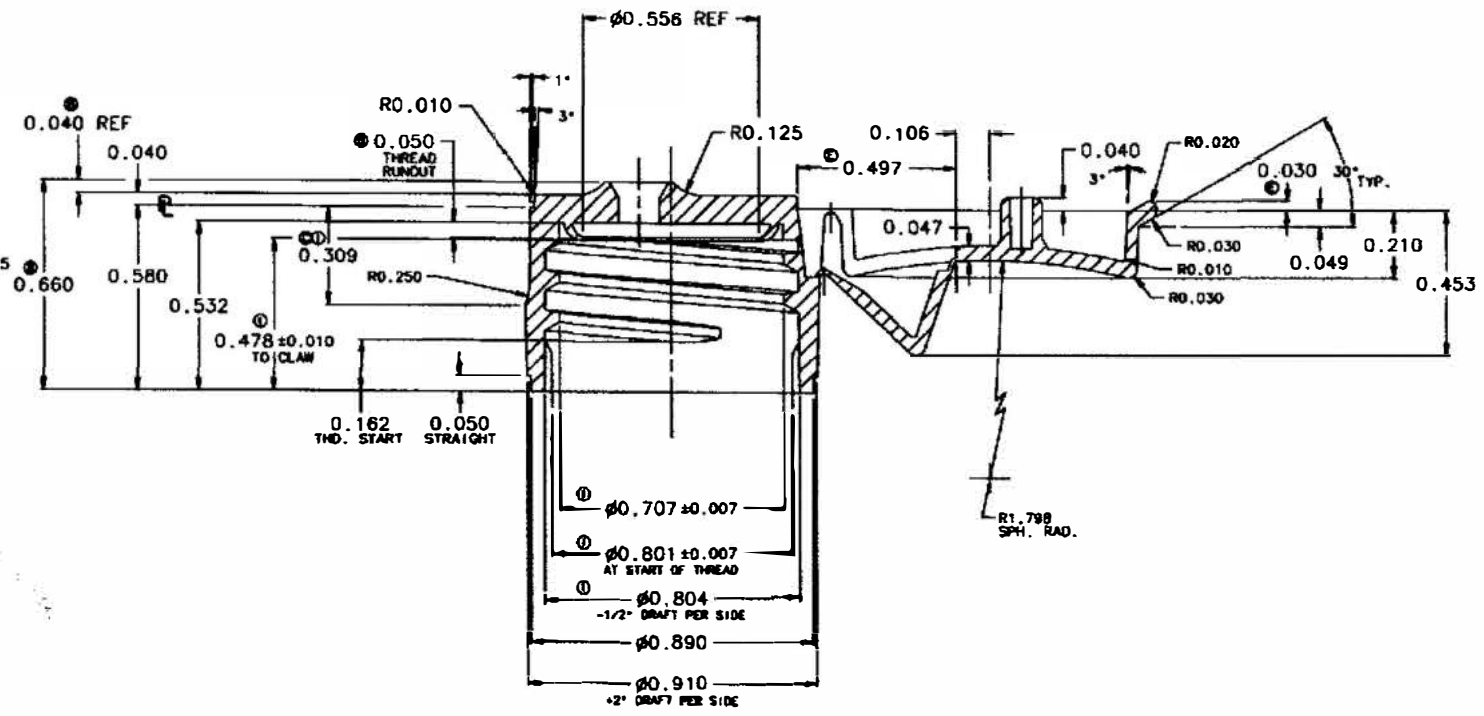
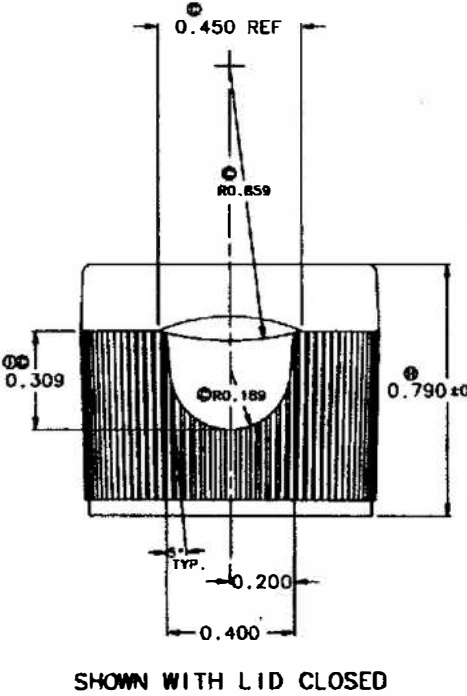
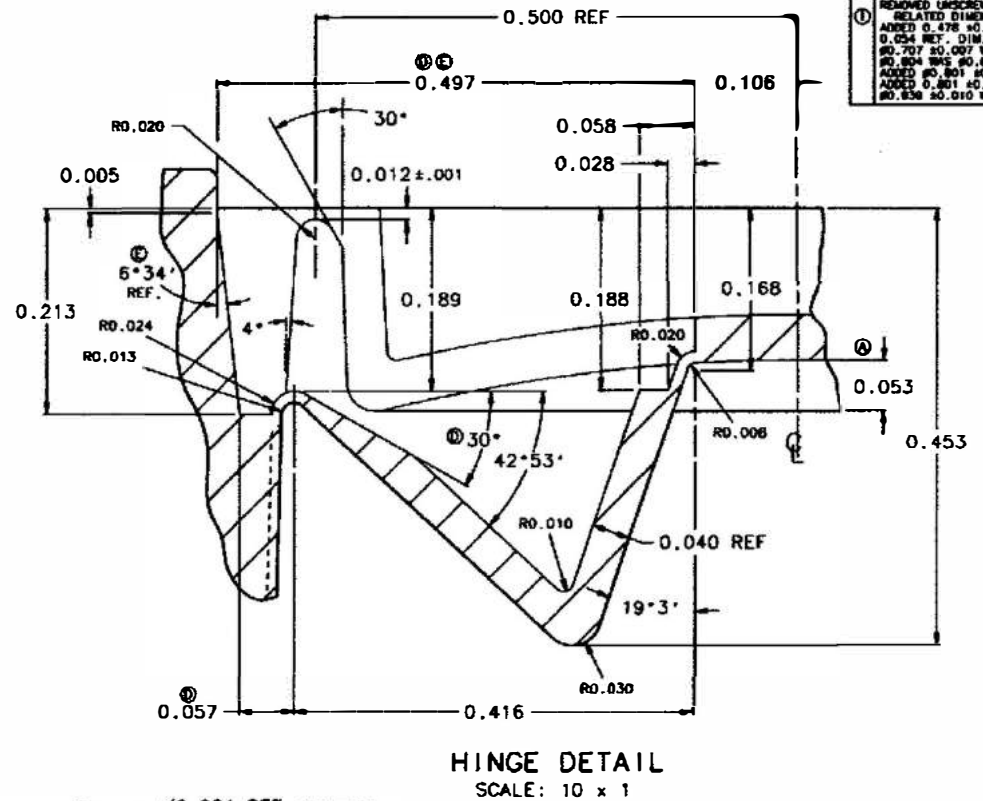
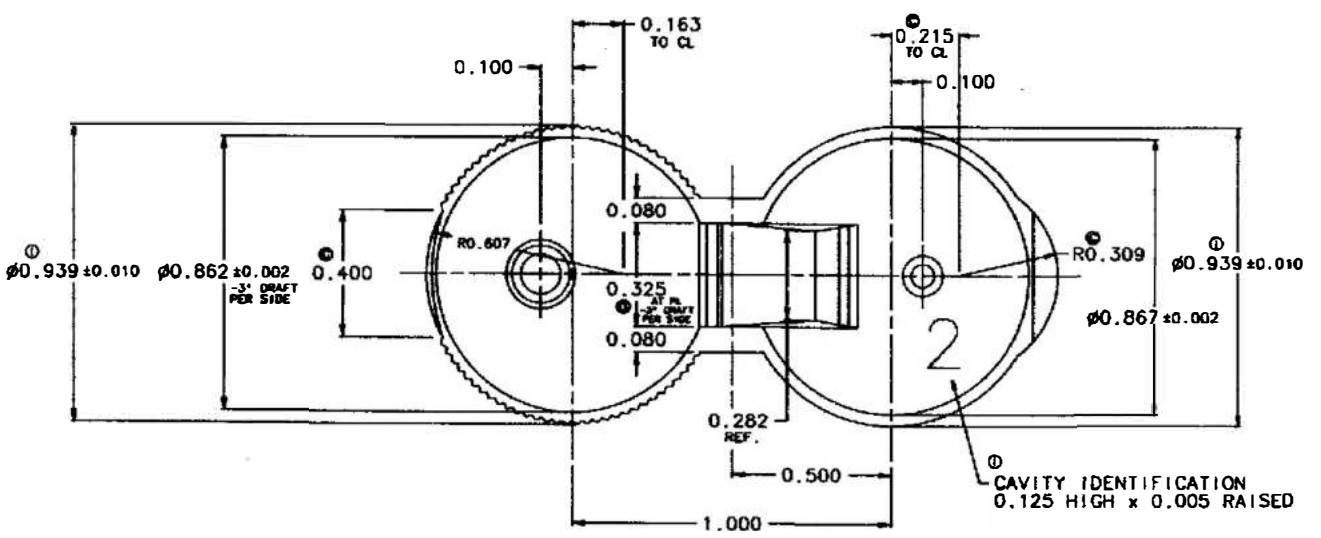
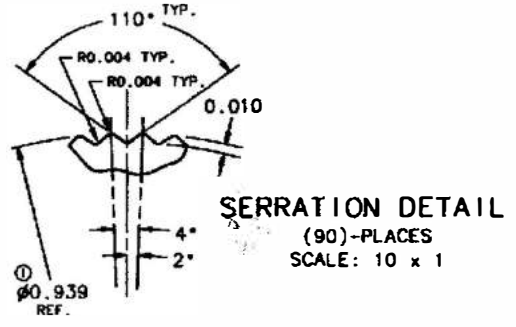
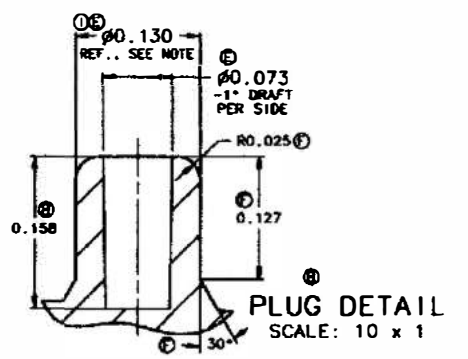
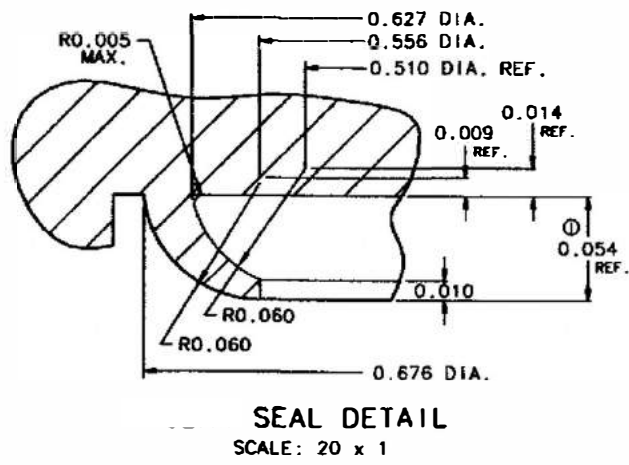
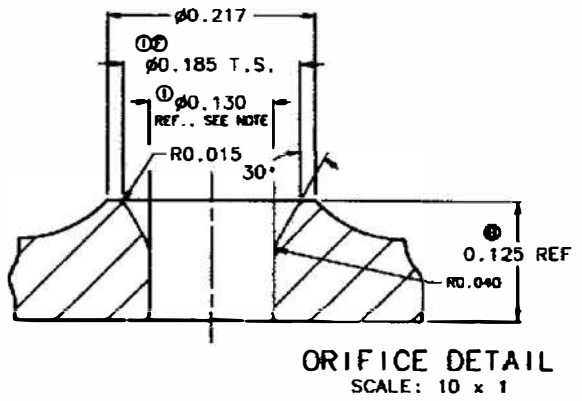
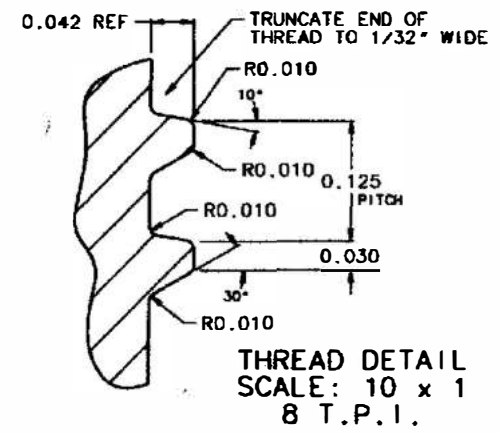
WE HAVE A **PRODUCT** FOR YOU

Part #: 30W19W



The
CARYCOMPANY
Est. 1895

1195 W. Fullerton Ave. | Addison, IL 60101 | T: 630.629.6600 | F: 630.629.3690 |



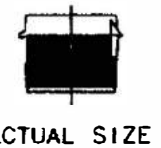
REV	REVISION DESCRIPTION	DATE
1	RELOCATED 0.053 DIMENSION	06-22-83
2	REMOVED 0.030 STEP 0.098 WAS 0.085, 0.640 WAS 0.680 0.158 WAS 0.128, 0.128 WAS 0.120 0.045 WAS 0.015, 0.040 WAS 0.080 REVISED PLUG DETAIL ADDED 0.050 THREAD RUNDOUT	06-22-83
3	REVISED THUMB TAB AREA 0.215 WAS 0.313, 0.308 WAS 0.210 0.302 WAS 0.721, 0.488 WAS 0.312 ADDED 0.850 RAD & 0.168 TAB	06-22-83
4	0.480 WAS 0.472, 0.882 WAS 0.850 2° INC WAS 1° INC, 0.325 WAS 0.320 ADDED 30° ANG ON HINGE FOR CLEARANCE	06-22-83
5	ADDED UNSCREWING RATCHETS REVISED ORIFICE AND PLUG DETAIL 0.487 WAS 0.488, 0°30' WAS 2° ADDED 0.005	06-22-83
6	REVISED POST AND ORIFICE 0.128 WAS 0.127, 0.181 WAS 0.178 0.0015 UNDERCUT WAS 0.001 REMOVED POST CHAMFER ADDED 0.025 R	06-22-83
7	REWORK IN CAD REMOVED NOTE #2	06-22-83
8	0.790±0.015 WAS 0.790 REF.	06-22-83
9	REVISED LOCATION OF CAM ID. REMOVED TREATIN TREATING REVISED POST & ORIFICE ADDED NOTE FOR POST & ORIFICE REVISED COMPONENT NOTE REMOVED UNSCREWING LUGS & ALL RELATED DIMENSIONS & NOTES ADDED 0.478 ± 0.010 DIA TO CLAW 0.054 REF. DIM. WAS 0.050 0.707 ± 0.007 WAS 0.705 0.804 WAS 0.800 ADDED 0.801 ± 0.007 AT S.O.T. ADDED 0.801 ± 0.015 OVER HINGE 0.838 ± 0.010 WAS 0.847	06-22-83

NOTE:
TOLERANCES APPLY TO THE AVERAGE OF HIGH & LOW POINTS ON DIAMETER(S).

NOTE:
COMPONENT WITH #17045 & #17129.

NOTE:
PLUG DIA. & ORIFICE DIA. TO BE SIZED TO CREATE SEAL & PRODUCE A 2 LB TO 6 LB LID LIFTING FORCE.

MC - PP	The CARY COMPANY Est. 1899	TITLE: 20-410 SURE SNAP CLOSURE (1/8" ORIFICE)
NFC -		CUSTOMER: STOCK
SC -		DRAWN BY: D. PALERNO DATE: 07-26-83 CHECKED BY: [Signature]
DIMENSIONS ARE IN INCHES.	This confidential drawing has been furnished by Alcoa Packaging. The information and technology therein may not be used for the design or production of third party equipment without express consent of Alcoa Packaging.	PROJECT No. [Blank] SCALE: 4 x 1
TOLERANCES UNLESS OTHERWISE SPECIFIED: DECIMALS: ±0.005		DWG: D-17044



ACTUAL SIZE