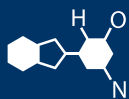


# IF YOU...



MIX IT. FILL IT. PACK IT. SHIP IT.

# WE HAVE A **PRODUCT** FOR YOU

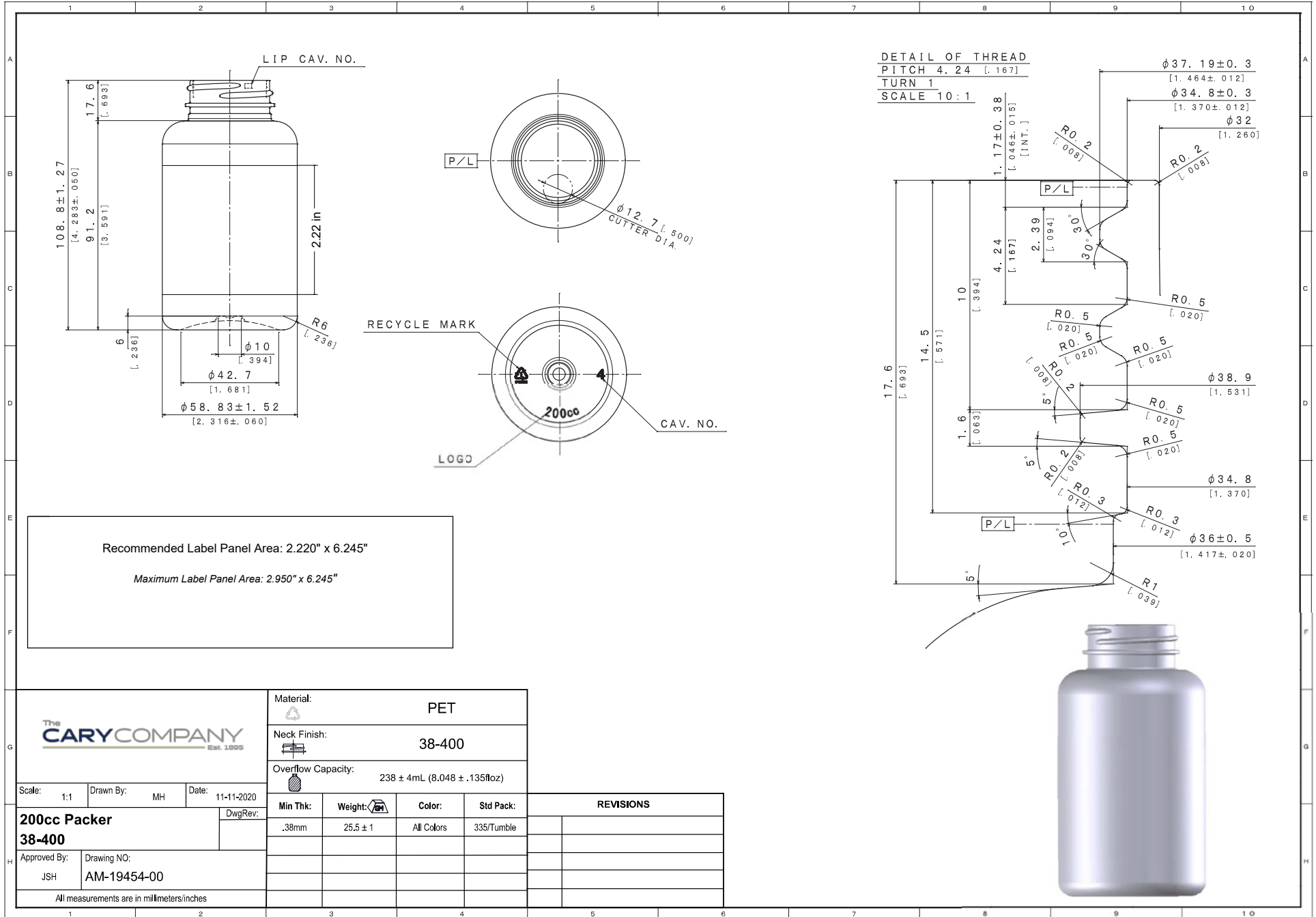
Part # 30W202

Plastic Packer Bottles

6.75 oz. (200 cc) Clear PET Plastic Packer Bottle,  
38mm 38-400



The  
**CARY**COMPANY  
Est. 1895



		Material: PET																					
		Neck Finish: 38-400																					
		Overflow Capacity: 238 ± 4mL (8.048 ± .135floz)																					
Scale: 1:1	Drawn By: MH	Date: 11-11-2020	<table border="1"> <thead> <tr> <th colspan="4">REVISIONS</th> </tr> <tr> <th>Min Thk:</th> <th>Weight:</th> <th>Color:</th> <th>Std Pack:</th> </tr> </thead> <tbody> <tr> <td>.38mm</td> <td>25.5 ± 1</td> <td>All Colors</td> <td>335/Tumble</td> </tr> <tr> <td> </td> <td> </td> <td> </td> <td> </td> </tr> <tr> <td> </td> <td> </td> <td> </td> <td> </td> </tr> </tbody> </table>	REVISIONS				Min Thk:	Weight:	Color:	Std Pack:	.38mm	25.5 ± 1	All Colors	335/Tumble								
REVISIONS																							
Min Thk:	Weight:	Color:	Std Pack:																				
.38mm	25.5 ± 1	All Colors	335/Tumble																				
<b>200cc Packer</b> <b>38-400</b>		DwgRev:																					
Approved By: JSH	Drawing NO: AM-19454-00																						
All measurements are in millimeters/inches																							