

IF YOU...



MIX IT. FILL IT. PACK IT. SHIP IT.

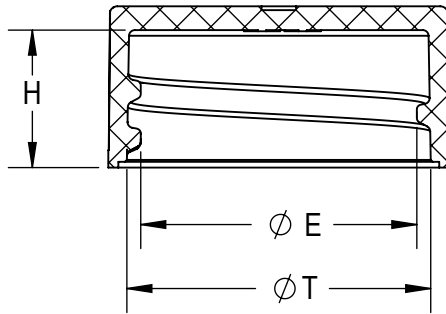
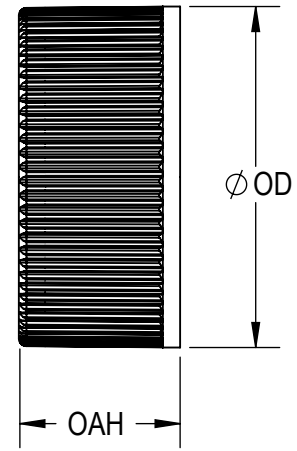
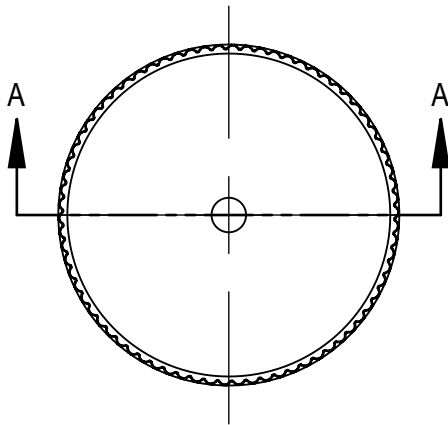
WE HAVE A **PRODUCT** FOR YOU

Part #: 30W20L



The
CARYCOMPANY
Est. 1895

1195 W. Fullerton Ave. | Addison, IL 60101 | T: 630.629.6600 | F: 630.629.3690 |



SECTION A-A
SCALE 2 : 1

THREAD DETAIL INFORMATION:
8 THREADS PER INCH, 0.125" PITCH

REFERENCE	TOLERANCE	UNITS	DIMENSION
E	±0.007 [0.18]	in [mm]	0.716 [18.19]
T	±0.007 [0.18]	in [mm]	0.792 [20.12]
H	±0.008 [0.20]	in [mm]	0.362 [9.19]
OAH	±0.008 [0.20]	in [mm]	0.420 [10.67]
OD	±0.011 [0.28]	in [mm]	0.888 [22.56]
PART WEIGHT	± 0.10	g	1.1

STATIC TORQUE RECOMMENDATION
8-12in-lbs
THIS REQUIREMENT MAY VARY DEPENDING
UPON BOTTLE MATERIAL, NECK FINISH, AND
CAPPING EQUIPMENT

DRAWING TYPE : CUSTOMER

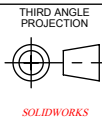
REPLACES DRAWINGS:
20-RMX

DIMENSIONS ENCLOSED IN ()
INDICATE REFERENCE
DIMENSIONS AND NO TOLERANCE
LIMITS ARE ESTABLISHED

TOLERANCES UNLESS OTHERWISE SPECIFIED

DIMENSION (inches)	TOLERANCE	DIMENSION (mm)	TOLERANCE
0-0.787	±0.006	0-20	±0.152
0.788-1.181	±0.008	21-30	±0.203
1.182-2.756	±0.012	31-70	±0.305
2.757-3.937	±0.016	71-100	±0.406
3.938-5.096	±0.020	101-150	±0.508
5.097-7.874	±0.024	151-200	±0.610
7.875-9.843	±0.032	201-250	±0.813
ANGULAR TOLERANCE ± 2°			

The
CARY COMPANY
Est. 1895



DISTRIBUTION
CODE
D

DRAWING NAME
**20-400 CT
RMX (RIBBED SIDE, MATTED TOP)**

DRAWING NUMBER
CQA - 10076

DRAWN BY: CDB 11/20/2014

MATERIAL
POLYPROPYLENE

ENG APPR: BDG 10/6/2017

MODEL NUMBER: **PM 10076 20-400 CT**

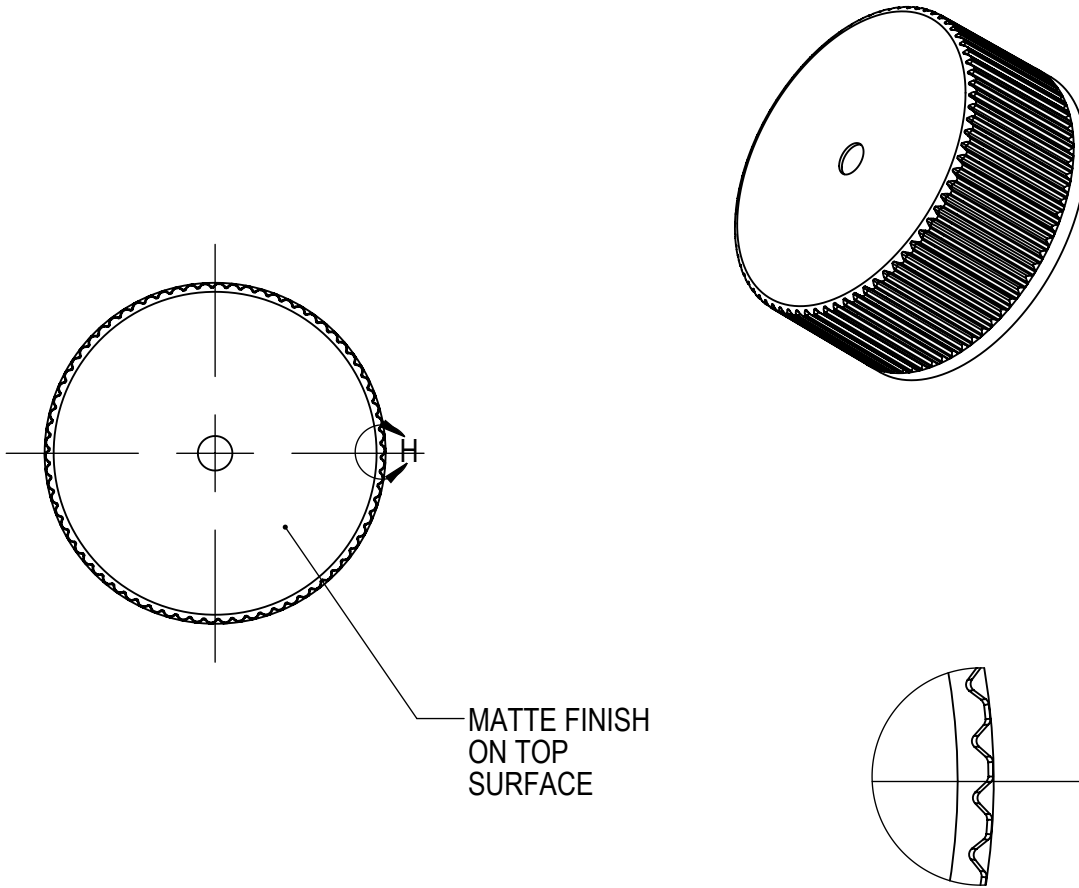
QA APPR: REL 10/06/2017

SCALE 1:1	SHEET SIZE 11in*8.5in	SHEET 1 of 3	REV/VP 01.AA
--------------	--------------------------	-----------------	-----------------

THE CLOSURE DIMENSIONS
DEPICTED ARE THOSE WHICH HAVE GENERALLY BEEN
FOUND TO BE FUNCTIONAL BASED ON INDUSTRY
EXPERIENCE BECAUSE OF VARIABILITY IN GLASS AND
PLASTIC CONTAINER FINISHES, EACH CLOSURE/FINISH
SYSTEM SHOULD BE INDIVIDUALLY EVALUATED AND
TESTED TO ENSURE IT MEETS APPLICABLE
PERFORMANCE CRITERIA. SEE QUALITY ASSURANCE
SPECIFICATIONS FOR ADDITIONAL INFORMATION.

THE CARY COMPANY RESERVES THE RIGHT TO REVISE
ANY OR ALL SPECIFICATIONS AND REQUIREMENTS.

REVISIONS					
DATE	REV.	N/P	DESCRIPTION	ENG	DRW
11/20/14	00	AA	INITIAL DRAWING REDRAWN FROM 20-RMX, SEE 20-RMX FOR REVISION HISTORY.	CDB	CDB
3/24/16	00	AB	CORRECTED ERROR RECOMMENDED NECK FINISH FINISH 'H'	BDG	BDG
3/20/17	00	AC	UPDATED DRAWING FORMAT	BDG	DAS
10/4/17	01	AA	REVISED THREAD WRAP FROM 1.0 TO 1.1 AND THREAD PROFILE TOP ANGLE FROM 25° TO 10°	BDG	BDG



DETAIL H
SCALE 8 : 1
(74) EQUISPACED RIBS

STATIC TORQUE RECOMMENDATION
8-12in-lbs
THIS REQUIREMENT MAY VARY DEPENDING UPON BOTTLE MATERIAL, NECK FINISH, AND CAPPING EQUIPMENT

DRAWING TYPE : CUSTOMER

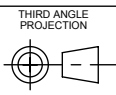
REPLACES DRAWINGS: 20-RMX
DIMENSIONS ENCLOSED IN () INDICATE REFERENCE DIMENSIONS AND NO TOLERANCE LIMITS ARE ESTABLISHED

TOLERANCES UNLESS OTHERWISE SPECIFIED			
DIMENSION (inches)	TOLERANCE	DIMENSION (mm)	TOLERANCE
0-0.787	±0.006	0-20	±0.152
0.788-1.181	±0.008	21-30	±0.203
1.182-2.756	±0.012	31-70	±0.305
2.757-3.937	±0.016	71-100	±0.406
3.938-5.096	±0.020	101-150	±0.508
5.097-7.874	±0.024	151-200	±0.610
7.875-9.843	±0.032	201-250	±0.813
ANGULAR TOLERANCE ± 2°			



THE CLOSURE DIMENSIONS DEPICTED ARE THOSE WHICH HAVE GENERALLY BEEN FOUND TO BE FUNCTIONAL BASED ON INDUSTRY EXPERIENCE BECAUSE OF VARIABILITY IN GLASS AND PLASTIC CONTAINER FINISHES, EACH CLOSURE/FINISH SYSTEM SHOULD BE INDIVIDUALLY EVALUATED AND TESTED TO ENSURE IT MEETS APPLICABLE PERFORMANCE CRITERIA. SEE QUALITY ASSURANCE SPECIFICATIONS FOR ADDITIONAL INFORMATION.

THE CARY COMPANY RESERVES THE RIGHT TO REVISE ANY OR ALL SPECIFICATIONS AND REQUIREMENTS.



THIRD ANGLE PROJECTION
D

DISTRIBUTION CODE
D

DRAWING NAME
**20-400 CT
RMX (RIBBED SIDE, MATTED TOP)**

DRAWING NUMBER
CQA - 10076

DRAWN BY: CDB 11/20/2014

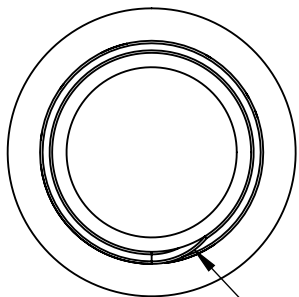
MATERIAL
POLYPROPYLENE

ENG APPR: BDG 10/6/2017

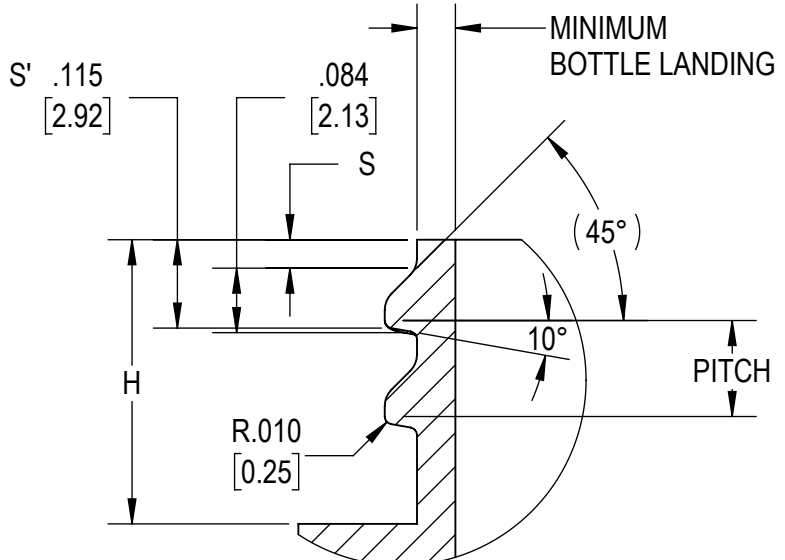
MODEL NUMBER: **PM 10076 20-400 CT**

QA APPR: REL 10/06/2017

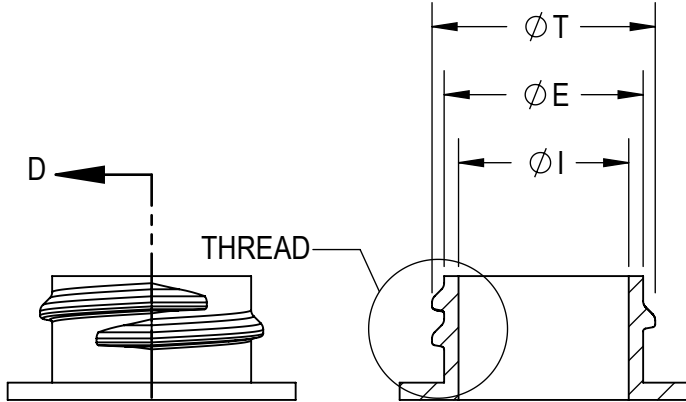
SCALE 3:1	SHEET SIZE 11in*8.5in	SHEET 2 of 3	REV/NP 01.AA
--------------	--------------------------	-----------------	-----------------



THREAD START



DETAIL THREAD
SCALE 4 : 1



SECTION D-D

REFERENCE	TOLERANCE	UNITS	DIMENSION
E	±0.008 [0.20]	in [mm]	0.691 [17.55]
T	±0.008 [0.20]	in [mm]	0.775 [19.69]
I	MINIMUM	in [mm]	0.404 [10.26]
S	±0.015 [0.38]	in [mm]	0.037 [0.94]
H	MINIMUM	in [mm]	0.371 [9.42]
PITCH		in [mm]	0.125
TPI			8

NOTE: THE NOMINAL ORIENTATION ILLUSTRATED IS BASED ON NOMINAL DIMENSIONS OF BOTH THE CLOSURE AND THE RECOMMENDED NECK FINISH. FOR EXACT ORIENTATION EACH BOTTLE SHOULD BE EVALUATED ON A CASE BY CASE BASIS.

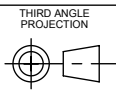
THE CLOSURE DIMENSIONS DEPICTED ARE THOSE WHICH HAVE GENERALLY BEEN FOUND TO BE FUNCTIONAL BASED ON INDUSTRY EXPERIENCE BECAUSE OF VARIABILITY IN GLASS AND PLASTIC CONTAINER FINISHES, EACH CLOSURE/FINISH SYSTEM SHOULD BE INDIVIDUALLY EVALUATED AND TESTED TO ENSURE IT MEETS APPLICABLE PERFORMANCE CRITERIA. SEE QUALITY ASSURANCE SPECIFICATIONS FOR ADDITIONAL INFORMATION.

THE CARY COMPANY RESERVES THE RIGHT TO REVISE ANY OR ALL SPECIFICATIONS AND REQUIREMENTS.

DRAWING TYPE : CUSTOMER

DIMENSIONS ENCLOSED IN () INDICATE REFERENCE DIMENSIONS AND NO TOLERANCE LIMITS ARE ESTABLISHED

TOLERANCES UNLESS OTHERWISE SPECIFIED			
DIMENSION (inches)	TOLERANCE	DIMENSION (mm)	TOLERANCE
0-0.787	±0.006	0-20	±0.152
0.788-1.181	±0.008	21-30	±0.203
1.182-2.756	±0.012	31-70	±0.305
2.757-3.937	±0.016	71-100	±0.406
3.938-5.096	±0.020	101-150	±0.508
5.097-7.874	±0.024	151-200	±0.610
7.875-9.843	±0.032	201-250	±0.813
ANGULAR TOLERANCE ± 2°			



DISTRIBUTION CODE
D

DRAWING NAME
RECOMMENDED NECK FINISH

DRAWN BY: CDB 11/20/2014

MATERIAL

ENG APPR: BDG 10/6/2017

MODEL NUMBER:

QA APPR: REL 10/06/2017

SCALE 3:2	SHEET SIZE 8.5 X 11	SHEET 3 of 3	REV/N/P 01.AA
--------------	------------------------	-----------------	------------------