

IF YOU...



MIX IT. FILL IT. PACK IT. SHIP IT.

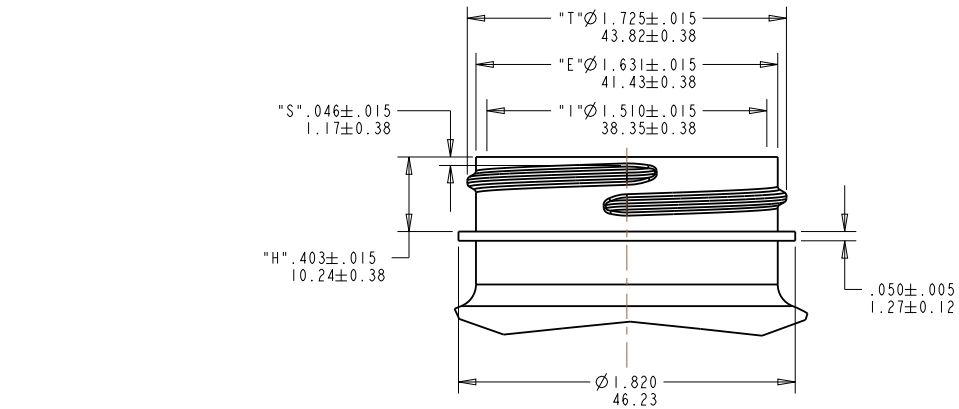
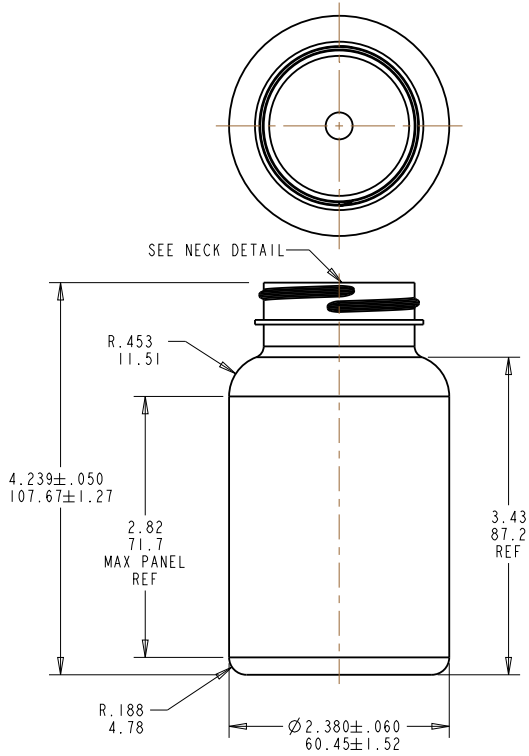
WE HAVE A PRODUCT FOR YOU

Part #: 30W225



The
CARYCOMPANY
Est. 1895

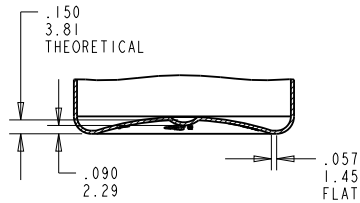
1195 W. Fullerton Ave. | Addison, IL 60101 | T: 630.629.6600 | F: 630.629.3690 |



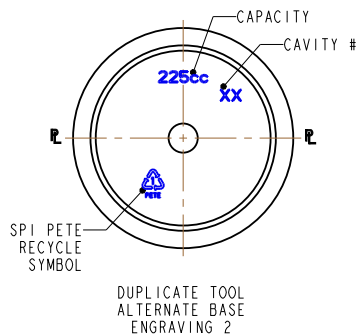
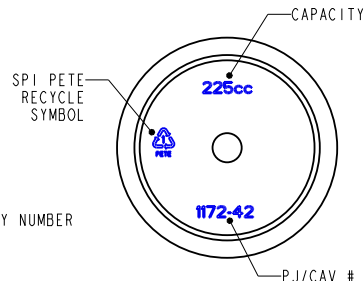
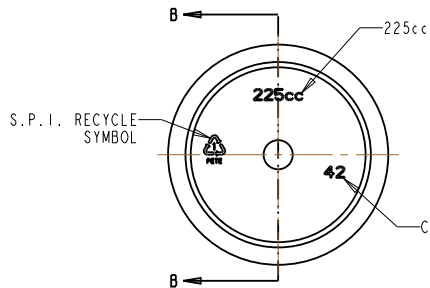
NECK DETAIL:
SCALE 2:1

FINISH SPECIFICATIONS:

1. FINISH: L45SP400 DESIGN
2. NO. OF TURNS: 1 FULL TURN
3. THREADS PER INCH: 6
4. THREAD START: 90° FROM P.L. (AS SHOWN)



SECTION B-B



DUPLICATE TOOL
ALTERNATE BASE
ENGRAVING 2



NOTES:

1. CRITICAL DIMENSIONS ARE SHOWN WITH TOLERANCES. CRITICAL DIMENSION TO BE USED FOR QC PURPOSES.
2. ALL OTHER DIMENSIONS TO BE USED FOR REFERENCE ONLY.

The **CARY COMPANY**
Est. 1895

| REV | ECR | DESCRIPTION | BY | DATE | REV | ECR | DESCRIPTION | BY | DATE |
|-----|-----|-------------|----|------|-----|-----|--|-----|-------------|
| | | | | | H | 199 | Add duplicate tool base engraving. Update title block. "I" was 1.251" MIN. | RAB | Jun-17-19 |
| | | | | | G | 194 | Add duplicate tool base engraving. | RAB | Oct-30-18 |
| | | | | | F | | Weight tool (22). | SCT | Jul-19-13 |
| | | | | | E | | Weight tool (21). | SCT | Jan-05-12 |
| | | | | | D | | Add min wall note. | SCT | Oct-17-11 |
| | | | | | C | | Add OFC @ 37g. | SCT | Jul-27-10 |
| | | | | | B | | Added metric dimensions. | SCT | May-04-10 |
| | | | | | J | 205 | 37g WAS 250cc & 20g WAS 242cc. | JAZ | Oct-1-25-19 |

| No | WEIGHT (g) | OVERFLOW (cc) | MIN WALL (in) | NOTES |
|----|------------|---------------|---------------|-------|
| 02 | 37.0 ± 3.0 | 242 ± 7 | .012 | |
| 01 | 28.0 ± 3.0 | 250 ± 7 | .012 | |

TITLE
225 cc STRAIGHT SIDED PACKER

| TOLERANCES: | DRAWN BY: | NECK: | L45SP400 | WEIGHT (g): | SEE TABLE |
|----------------------------|----------------|----------------|-----------|----------------|----------------|
| UNLESS OTHERWISE SPECIFIED | SCT | MIN WALL (in): | SEE TABLE | OVERFLOW (cc): | SEE TABLE |
| DECIMALS .XX# | DATE Feb-14-05 | CUSTOMER: | STOCK | 3D FILE No: | 225PM1TB45L400 |
| .XXX# | SCALE 1:1 | MATERIAL: | PET | DRAWING No: | 225PM1TB45L400 |
| .XXXX# | SHEET: 1 of 1 | REV: | J | | |
| FRACTIONS # | NPD No: | | | | |
| ANGLES * SEE NOTE 1 | | | | | |

MINIMUM WALL THICKNESS = .016 [0.4] AT LABEL MIDPOINT