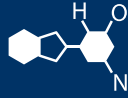


IF YOU...



MIX IT. FILL IT. PACK IT. SHIP IT.

WE HAVE A PRODUCT FOR YOU



1 oz. Straight Sided Glass Jar, 38mm
38-400

Product Category: Glass Straight Sided Jars

Part #	30W38S
Capacity	1 oz.
Color	Clear
Material	Glass
Dimensions	1.5" Dia. x 2.063"H
Neck Finish	38-400
Neck Width	38 mm
Case Pack	336 ea
Pallet Pack	10,752 ea. (32 Cases)

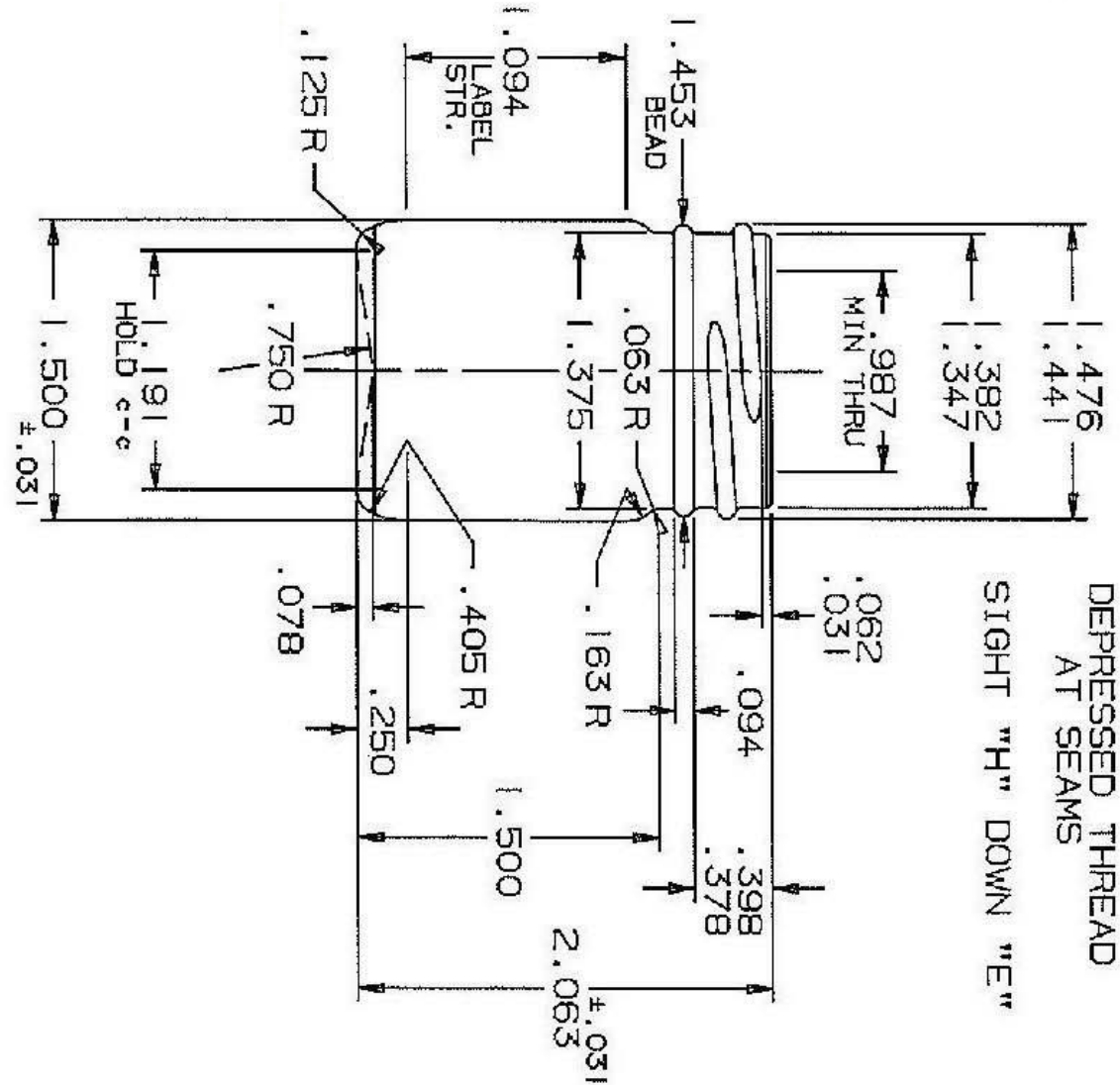
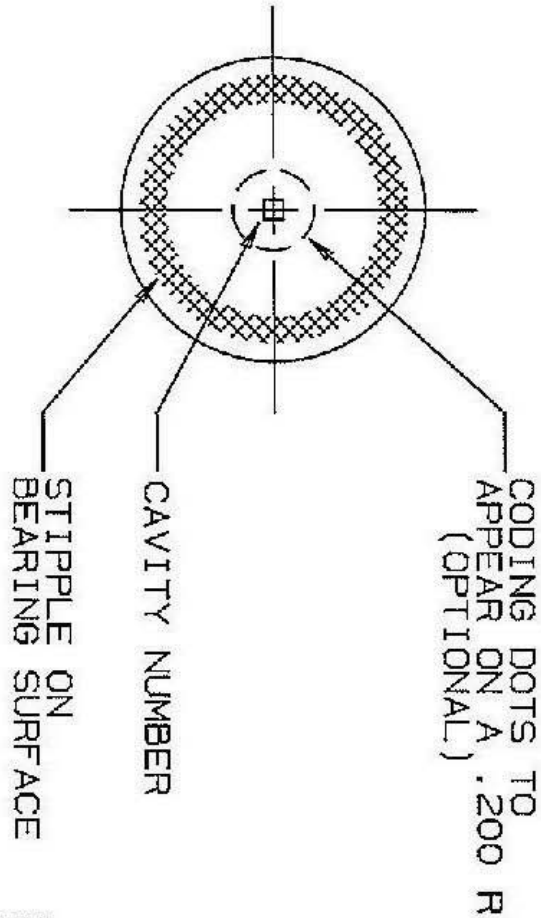
The
CARY COMPANY
Est. 1895

1195 W. Fullerton Ave. | Addison, IL 60101 | T: 630.629.6600 | F: 630.629.3690 | TheCaryCompany.com



Supplied By: **The Cary Company**
 Ph: 630-629-6600
 www.thecarycompany.com

30W38S



A025306

CUSTOMER	MOLD REGISTER NO. S-4392R	DATE DRAWN 5-26-99	
TITLE S/S JAR	SCALE FULL UNLESS OTHERWISE NOTED	DRAWN BY T U	
PRACTICAL FILL 1 oz	APPROX. WGT. 1.764 oz	CHECKED BY	REVISIONS
CAPACITY 34.6cc ± 1.4cc OF			
FINISH GPI 400-38MM-405			

50.0 GRAMS. FLINT