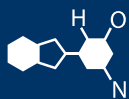
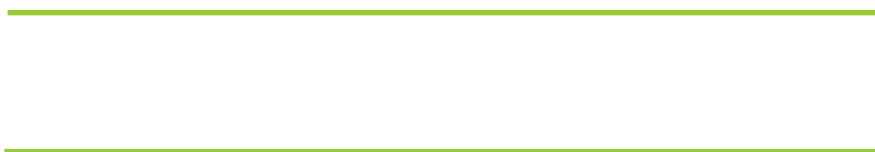


# IF YOU...



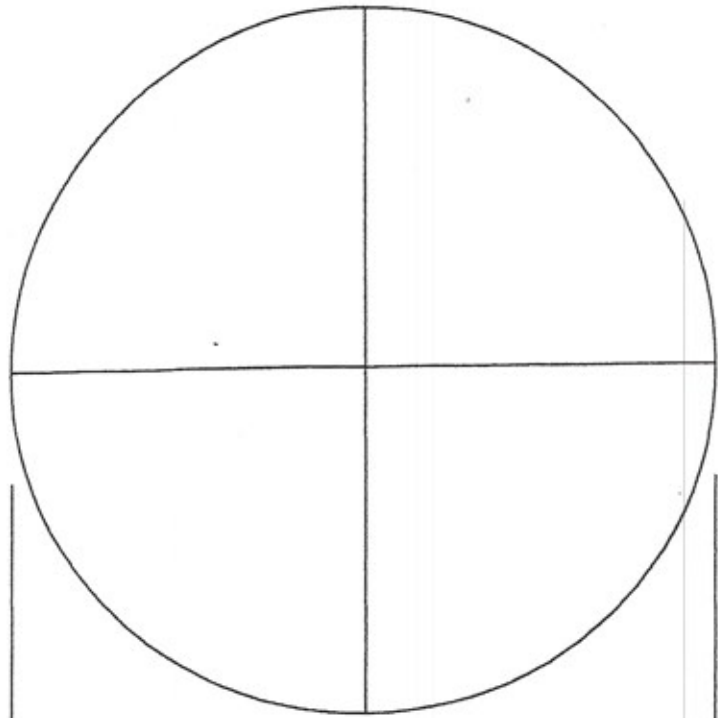
MIX IT. FILL IT. PACK IT. SHIP IT.

# WE HAVE A PRODUCT FOR YOU



Part #	30W39S
Neck Width	38mm
Neck Finish	38-400
Color	Silver
Material	Metal





Keystone Cap Company  
 Columbia, PA 17512

SIZE 38 MM CT SCREW CAP

METAL CLOSURE  
 CONTINUOUS THREAD DIMENSIONS

CAP TOLERANCES:

HEIGHT - 0.395 - 0.438

TORQUE RANGE - 15-23 <sup>16</sup>/<sub>16</sub>

"T" =  
 (KNURL O.D.)

0.416

Helix Angle 2°09"

0.049

Six Threads Per Inch

"E" = 1.406 <sup>+/-</sup> .018  
 (CAP THREAD I.D.) PLUG GAUGE VERIFIED

"C" = 1.59 <sup>+/-</sup> .018  
 (CURL O.D.)

DWG. No. 610327

DATE: 1951  
 DWG. BY LJT

GMA Rev. CL-1006  
 11- 1-95

PRECISION CALIPFR VERIFIED  
 BY: PEH 4/20/10

Note: USER RESPONSIBLE FOR  
 PERFORMANCE OF CONTAINER

Closure dimensions shown are those which we have determined to be functional and within the tolerances of the Closure Manufacturers Association. Because of variation in container dimensions each closure/container system should be individually evaluated to ensure proper fit.