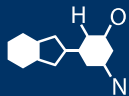


# IF YOU...



MIX IT. FILL IT. PACK IT. SHIP IT.

# WE HAVE A PRODUCT FOR YOU



Part #	30W4CU
Neck Width	48mm
Neck Finish	48-Snap
Cap Liner	Unlined - No Liner
Color	Copper
Material	LDPE
Dimensions	2.05" Dia. x 0.684"H
Case Pack	2,000 ea.
Pallet Pack	24,000 ea. (12 Cases)
Case Weight	26 lbs.
Pallet Weight	312 lbs.
Case Dimensions	24" x 20" x 16"
FDA Approved	Yes
BPA Free	Yes

