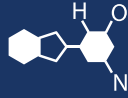


IF YOU...



MIX IT. FILL IT. PACK IT. SHIP IT.

WE HAVE A PRODUCT FOR YOU

Part # 30W89W

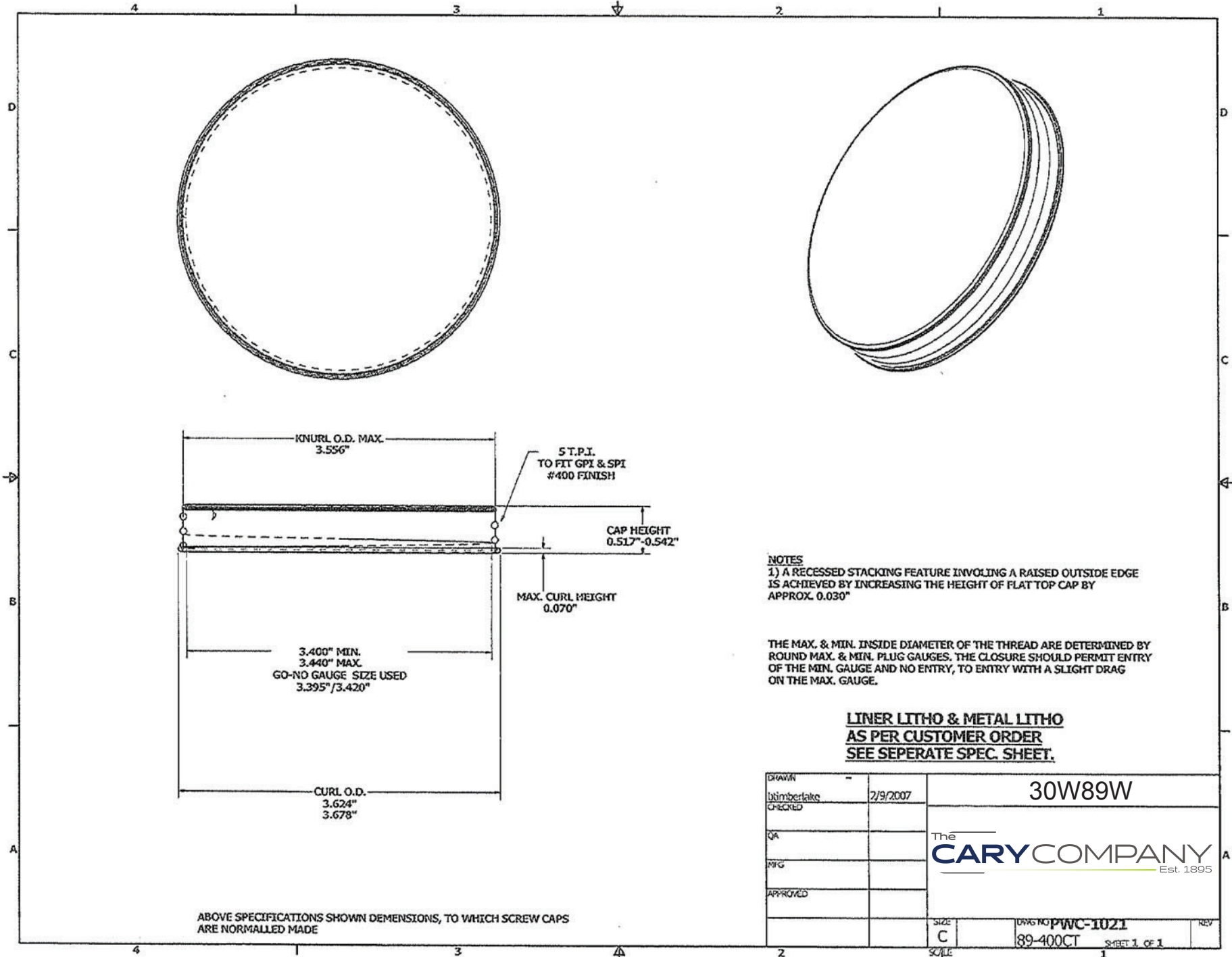
Metal Caps for Glass Jars

89mm 89-400 White/Gold Metal Cap
with Pulp & Poly Liner



The
CARYCOMPANY
Est. 1895

1195 W. Fullerton Ave. | Addison, IL 60101 | T: 630.629.6600 | F: 630.629.3690 | TheCaryCompany.com



NOTES
 1) A RECESSED STACKING FEATURE INVOLVING A RAISED OUTSIDE EDGE IS ACHIEVED BY INCREASING THE HEIGHT OF FLAT TOP CAP BY APPROX. 0.030"

THE MAX. & MIN. INSIDE DIAMETER OF THE THREAD ARE DETERMINED BY ROUND MAX. & MIN. PLUG GAUGES. THE CLOSURE SHOULD PERMIT ENTRY OF THE MIN. GAUGE AND NO ENTRY, TO ENTRY WITH A SLIGHT DRAG ON THE MAX. GAUGE.

**LINER LITHO & METAL LITHO
 AS PER CUSTOMER ORDER
 SEE SEPERATE SPEC. SHEET.**

DRAWN	-	2/9/2007	30W89W	
DESIGNED BY	Utinberlake		The CARY COMPANY Est. 1895	
CHECKED				
QA				
PMG				
APPROVED				
SIZE	C	DRWG NO	PWC-1021	REV
SCALE			89-400CT	SHEET 1 OF 1

ABOVE SPECIFICATIONS SHOWN DIMENSIONS, TO WHICH SCREW CAPS ARE NORMALLED MADE