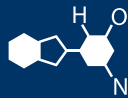


IF YOU...



MIX IT. FILL IT. PACK IT. SHIP IT.

WE HAVE A **PRODUCT** FOR YOU

Part #30W8CT

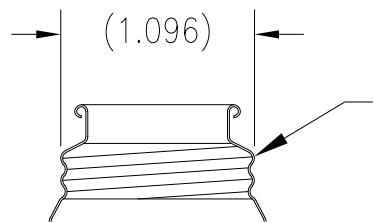
Metal Containers

8 oz. (250 ml) Cone Top Can with 1-1/8"
Beta Opening, Bulk Pack

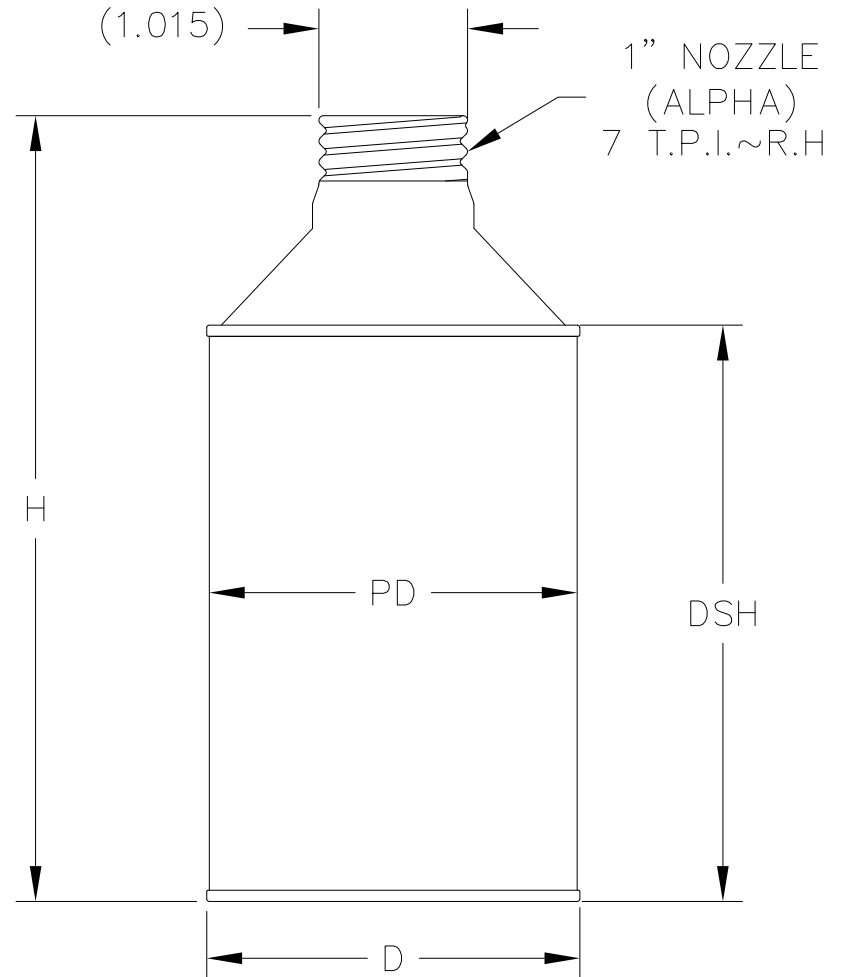


The
CARY COMPANY
Est. 1895

1195 W. Fullerton Ave. | Addison, IL 60101 | T: 630.629.6600 | F: 630.629.3690 | TheCaryCompany.com



1 1/8" NOZZLE
(BETA)
8 T.P.I.~R.H.



1" NOZZLE
(ALPHA)
7 T.P.I.~R.H.

NOZZLE AVAILABLE IN 1" AND 1 1/8" PROFILE

CAN	SIZE	D	PD	DSH	H	CAPACITY
211 X 304	1/2 PINT	2.680	2.577	3.250	4.407	236 ML
211 X 307	1/2 PINT	2.680	2.577	3.437	4.555	250 ML
211 X 407	3/4 PINT	2.680	2.577	4.437	5.590	12 OZ
211 X 600	PINT	2.680	2.577	5.969	7.130	16 OZ
211 X 604	PINT	2.680	2.577	6.245	7.393	16 OZ
307 x 509	PINT	3.400	3.281	5.563	7.000	16 OZ
307 x 600	PINT	3.400	3.281	6.000	7.430	16 OZ
307 x 704	QUART	3.400	3.281	7.250	8.680	32 OZ
307 x 710	QUART	3.400	3.281	7.625	9.055	32 OZ
307 x 800	QUART	3.400	3.281	8.000	9.435	32 OZ
307 x 804	QUART	3.400	3.281	8.250	9.685	32 OZ

DRAWN BY:	SCALE	REV. BY	NO.	DATE	REVISION DESCRIPTION
WTB	NONE	JW/JZ	C	8-15-16	ADDED 307 X 509 & 800 CAN SIZE TO TABLE
CHECKED BY:	DATE	JW/JZ	D	6-16-21	ADDED 307x804 SIZE TO TABLE
WTB	9-20-2000	JZ	E	1-26-22	ADDED 211x604 SIZE TO TABLE

PRODUCT DRAWING
ALL DIAMETER
CONETOP CANS

APPROVED BY:	LOCATION	SUPERCEDES	MATERIAL	PRINT NO.	REV.
1 ID				DRM11-0-001	F