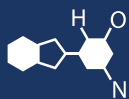


IF YOU...



MIX IT. FILL IT. PACK IT. SHIP IT.

WE HAVE A PRODUCT FOR YOU

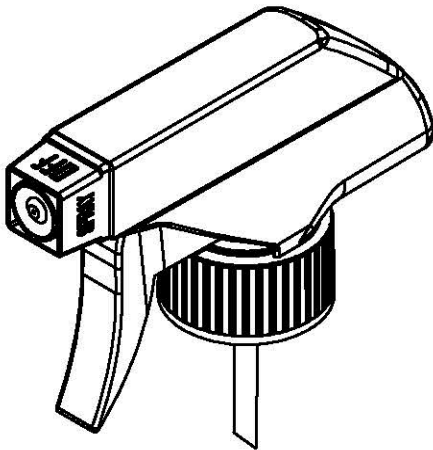
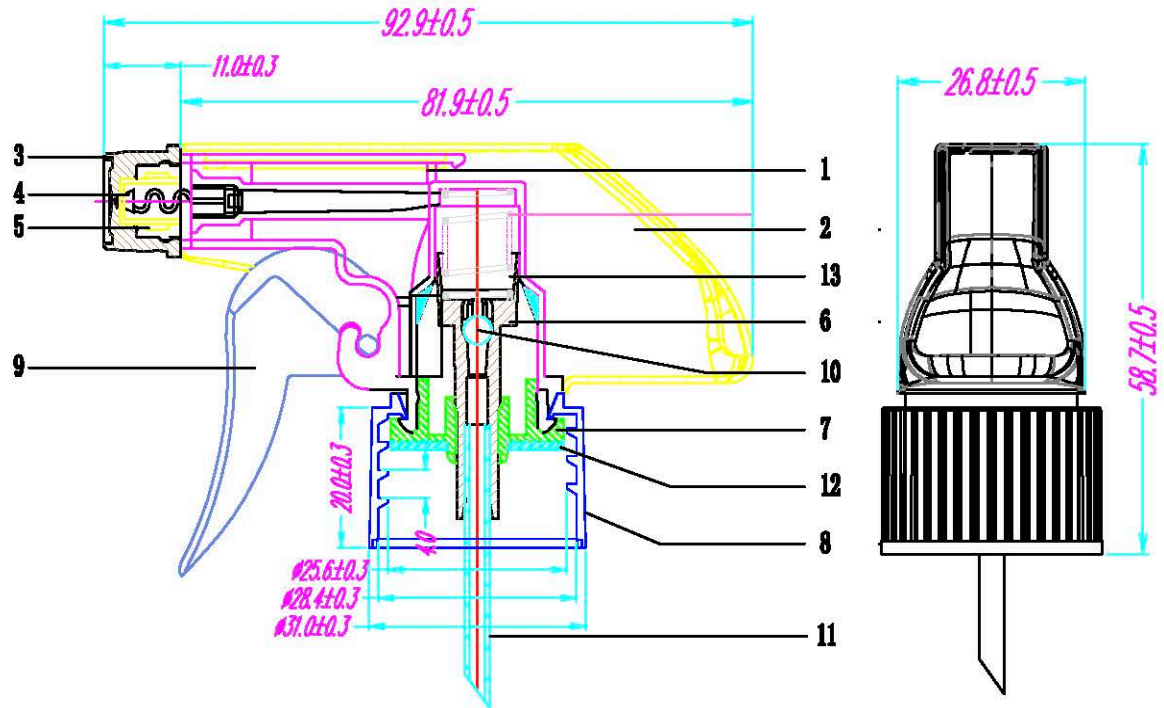
Part #: 30W8TK



The
CARYCOMPANY
Est. 1895

1195 W. Fullerton Ave. | Addison, IL 60101 | T: 630.629.6600 | F: 630.629.3690 |

MARK	REVISER	DESCRITN	DATRE



13	Spring	STN STL	Natural	2000810082	1	
12	Gasket	PP	Ø25*Ø8.6*1.2mm	2000810091	1	
11	Tube	PP	Ø3.0*0.7 thickness	2000830060	1	
10	Glass ball	GLASS	Ø4.0	2000840040	1	
9	trigger	PP	Color for order form	2000810048	1	
8	Closure	PP	M20*410	2000810034	1	
7	Guide plate	LDPE	Natural	2000810048	1	
6	Piston	HDPE	Natural	2000890048	1	
5	Sealing water jacket	HDPE	Natural	2000890044	1	
4	Spring	PP	Natural	2000890048	1	
3	Nozzle	PP	Color for order form	2000820042	1	
2	Cover	PP	Color for order form	2000810072	1	
1	Inner Body	PP	Natural	2000810040	1	
No.	Component	Material	Specification	Part no.	QTY	Remark

TOLERANCE	∅	∅	∅
0mm-15mm	±0.05	±0.10	±0.05
15mm-30mm	±0.05	±0.15	±1.00
30mm-50mm	±0.10	±0.20	±1.50
50mm-90mm	±0.15	±0.30	±2.00
ABOVE 90mm	±0.20	±0.40	±2.50
CENTER	±0.10	±0.50	±1.00
ANGLER	±0.25°	±0.50°	±2.00°

APPROVED:

SENSOR:

CHECKED:

DRAFTER:

UNIT: mm

MODEL NAME:
00058

SCALE: 1:1

PART NO.
100010300058

The
CARY COMPANY
Est. 1893

TITLE:
NHP 008 28/410 TIGGER SPRAY

VISUAL ANGLE
☞

QTY:
1/1

REV:
A0

FILE NO.
D-LN0088