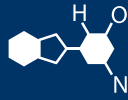


IF YOU...



MIX IT. FILL IT. PACK IT. SHIP IT.

WE HAVE A **PRODUCT** FOR YOU

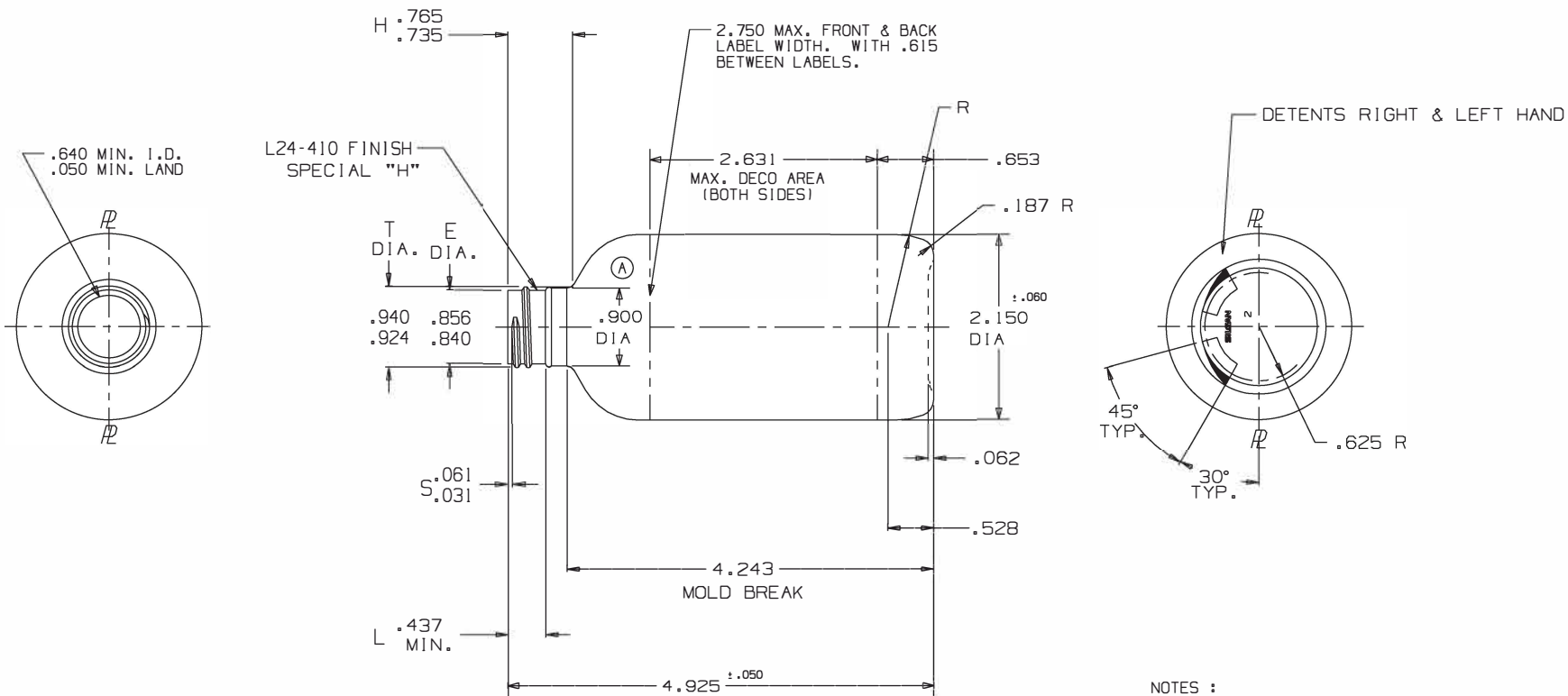
Part # 30WBR7

6 oz. Natural LDPE Plastic Boston Round
Bottle, 24mm 24-410



Supplied By: **The Cary Company**
 Ph: 630-629-6600
 www.thecarycompany.com

The
CARY COMPANY
 Est. 1895



NOTES :

- 1) OVERFLOW CAPACITY : 7.10 ± .20 FL.OZ. (210.0 ± 6.0 CC'S.)
- 2) WEIGHT : 25.0 ± 1.0 GRAMS
- 3) DIMENSIONS MARKED .XXX ARE CRITICAL MOLD SURFACES.

A	DIA WAS .859	5DEC07	KENT
LTR	DESCRIPTION	DATE	APPROVED
REVISIONS			

DIMENSIONS SHOWN ARE: <input type="checkbox"/> AS MOLDED <input checked="" type="checkbox"/> AFTER TREAT <input type="checkbox"/> AFTER TREAT & DECO	DRAWN BY KENT	MATERIAL LDPE	CUSTOMER
	DATE 22AUG06	QUOTE NO.	DESCRIPTION 6 FL. OZ. BOSTON ROUND
DWG. SIZE C	LABEL DWG. NO.		
	INFO. AA	REF. DWG. NO. MC-9-8872-J	
		TOOLING NO. TD31-15782	
	CAD UG	CODE NO. LDM-66583	
	SCALE FULL	SURF. AREA 34.1 IN2	DRAWING NO.