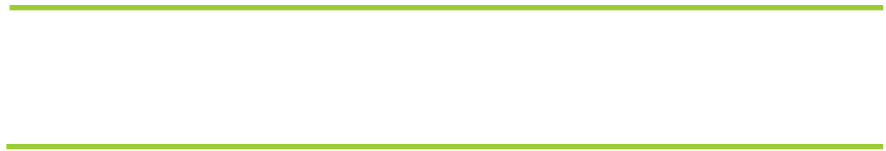
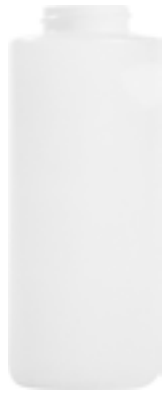


IF YOU...



MIX IT. FILL IT. PACK IT. SHIP IT.

WE HAVE A PRODUCT FOR YOU



Part #	30WC12
Capacity	12 oz.
Color	Natural
Material	HDPE
Dimensions	2.445" Dia. x 5.93"H
Neck Finish	38-400
Neck Width	38mm
BPA Free	Yes
FDA Approved	Yes
Case Pack	216 ea.
Pallet Pack	3,240 ea. (15 Cases)

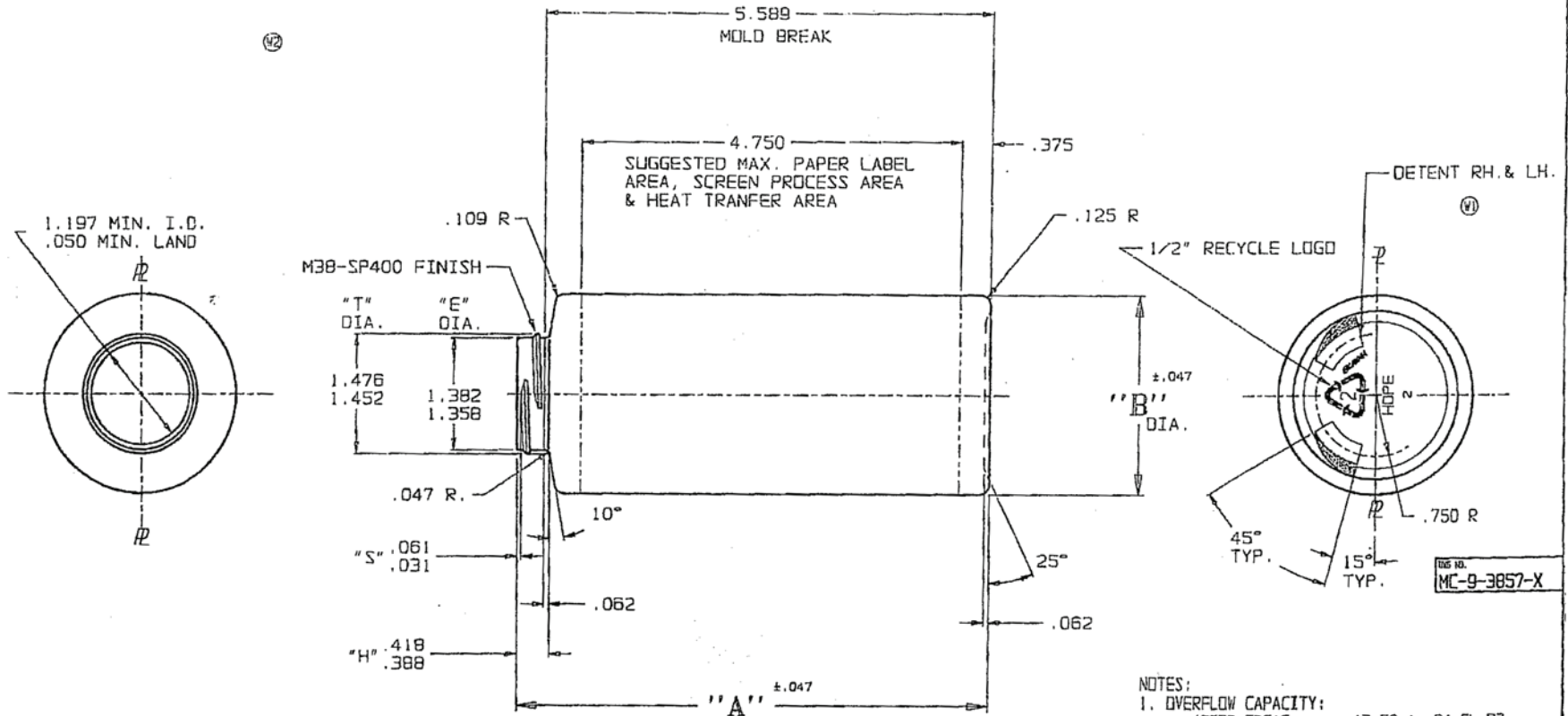




Supplied By: **The Cary Company**

Ph: 630-629-6600

www.thecarycompany.com



DWG. NO. MC-9-3857-X

- NOTES:
- OVERFLOW CAPACITY:
 - AFTER TREAT : 13.70 ± .24 FL.OZ. (405.0 ± 7.1 CC)
 - AFTER OVEN BAKE : 13.49 ± .24 FL.OZ. (399.0 ± 7.1 CC)
 - AFTER FLAME GLOSS : 13.49 ± .24 FL.OZ. (399.0 ± 7.1 CC)
 - WEIGHT: 22.0 ± 1.0 GRAMS
 - VERTICAL LABEL BREAK:
 - PAPER LABEL: NONE
 - SCREEN PROCESS: - .750
 - HEAT TRANSFER: - .375

R	R.F.P.	DA 8-28-85
M9	CAV. M.D. WAS CS-3858	DA 3-14-85
M2	NO. CUT & VIEW'S REMOVED	
M1	REPER WAS TOJ-8526, WAS SINGLE DETENT	
V	ADDED CODE 18172-529	MP 12-1-84
V	REDRAWN TO SILGAN STD'S	CS 8/25/80
REVISIONS		

3	HPM72-529
2	HDH72-590
1	HDH72-090
CODE CHART	

ALLOWABLE TOLERANCES UNLESS OTHERWISE SPECIFIED		DIMENSIONS SHOWN ARE	
PART		<input type="checkbox"/> AS MOLDED	<input checked="" type="checkbox"/> AFTER TREAT
DECIMAL DIMENSIONS REF.		<input checked="" type="checkbox"/> AFTER TREAT & DETENT	<input checked="" type="checkbox"/> AFTER TREAT & FLAME GLOSS
ANGLE IN DEGREES			
CONDITION	A	B	C
TREAT ONLY	5.930	2.445	
AFTER OVEN BAKE	5.922	2.436	
FLAME GLOSS	5.950	2.436	

DATE OF N.P.	NATURAL HOPE	CUSTOMER
DATE 6-18-85	DATE NO.	DESCRIPTION
APPROVED BY ROW	PRO. DES. NO. MC-9-12840	12 FL.OZ. CYLINDER
DATE 6-20-85	REP. DRAWING NO.	
ED CAUGHEY	DEPT. NO. 1031-14154	
SCALE FULL	CODE NO. SEE CHART	DWG. NO. MC-9-3857-X