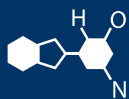


# IF YOU...



MIX IT. FILL IT. PACK IT. SHIP IT.

# WE HAVE A **PRODUCT** FOR YOU

Part # 30WC7B

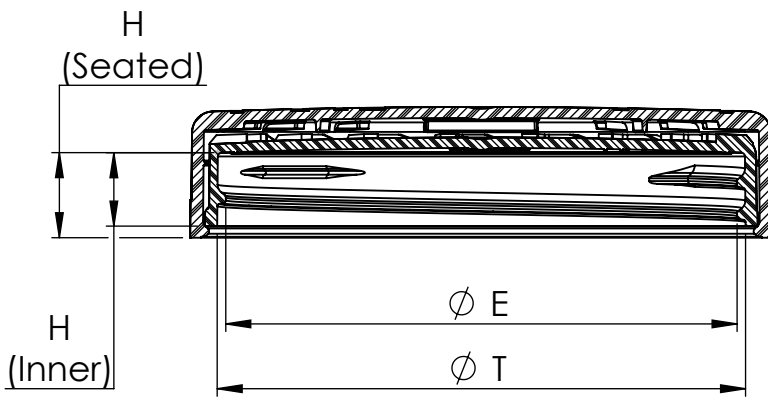
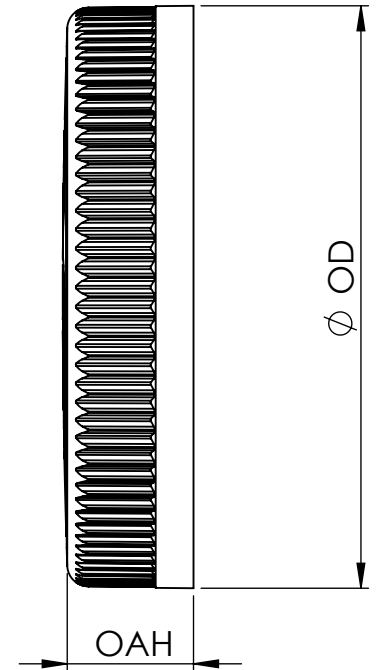
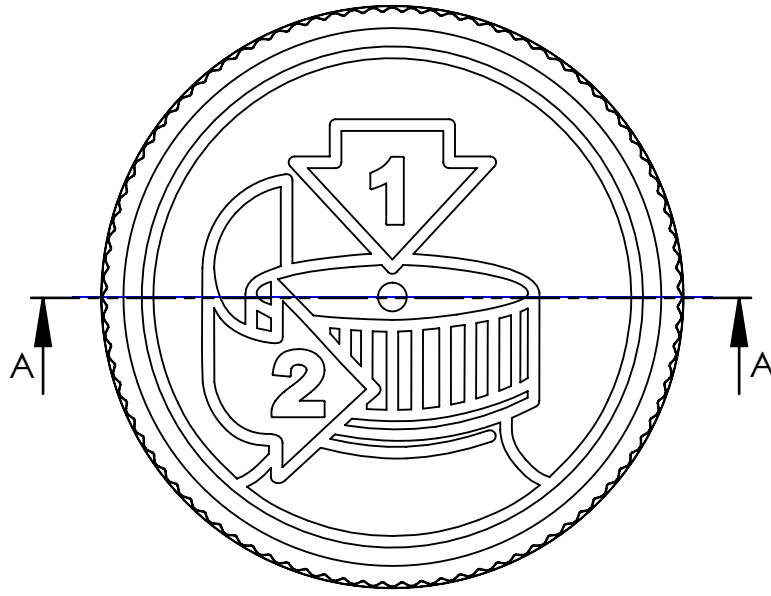
"Pictorial" Child Resistant Caps

70mm 70-400 Black Child Resistant Cap (Pictorial)  
w/Foam Liner (3-ply)



The  
**CARY**COMPANY  
Est. 1895

1195 W. Fullerton Ave. | Addison, IL 60101 | T: 630.629.6600 | F: 630.629.3690 | [TheCaryCompany.com](http://TheCaryCompany.com)



SECTION A-A

.167 PITCH - 6 THREADS PER INCH  
495° FULL DEPTH THREAD

REFERENCE	TOLERANCE	DIMENSION	UNITS
E	±0.012 [0.30]	2.655 [67.44]	in [mm]
T	±0.012 [0.30]	2.744 [69.69]	in [mm]
H [Seated]	REFERENCE	0.509 [12.93]	in [mm]
H [Inner]	±0.010 [0.25]	0.379 [9.63]	in [mm]
OD	±0.011 [0.28]	3.038 [77.17]	in [mm]
OAH	±0.010 [0.25]	0.657 [16.69]	in [mm]
PART WEIGHT	± 2.1	19.0	g

STATIC TORQUE RECOMMENDATION  
28-50 in-lbs  
THIS REQUIREMENT MAY VARY DEPENDING  
UPON BOTTLE MATERIAL, NECK FINISH, AND  
CAPPING EQUIPMENT

DRAWING TYPE : CUSTOMER

REPLACES DRAWINGS:

DIMENSIONS ENCLOSED IN ( )  
INDICATE REFERENCE  
DIMENSIONS AND NO TOLERANCE  
LIMITS ARE ESTABLISHED

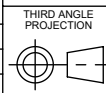
TOLERANCES UNLESS OTHERWISE SPECIFIED

DIMENSION (inches)	TOLERANCE	DIMENSION (mm)	TOLERANCE
0-0.787	±0.006	0-20	±0.152
0.788-1.181	±0.008	21-30	±0.203
1.182-2.756	±0.012	31-70	±0.305
2.757-3.937	±0.016	71-100	±0.406
3.938-5.096	±0.020	101-150	±0.508
5.097-7.874	±0.024	151-200	±0.610
7.875-9.843	±0.032	201-250	±0.813

ANGULAR TOLERANCE ± 2°

PROPRIETARY AND CONFIDENTIAL

The  
**CARY** COMPANY  
Est. 1895



SOLIDWORKS

DISTRIBUTION  
CODE  
**D**

DRAWING NAME  
**70-400 CRC ASSM  
PCTO**

DRAWING NUMBER  
**CQA - 10125**

MATERIAL  
**POLYPROPYLENE**

MODEL NUMBER:  
**PM 11145 70-400 CRC ASSM**

DRAWN BY: LB

1/15/2015

ENG APPR: BDG

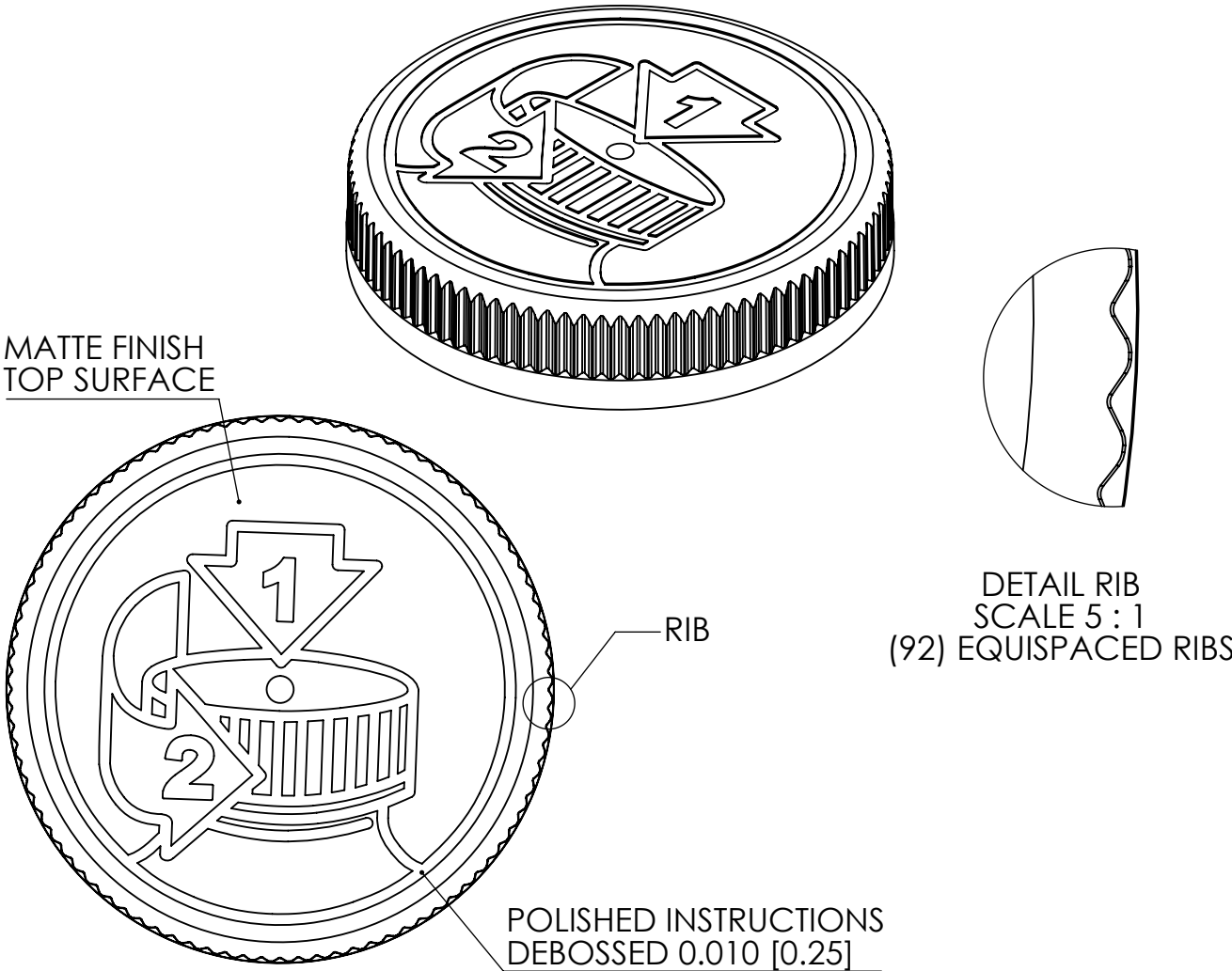
5/20/2022

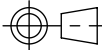
QA APPR: TEM

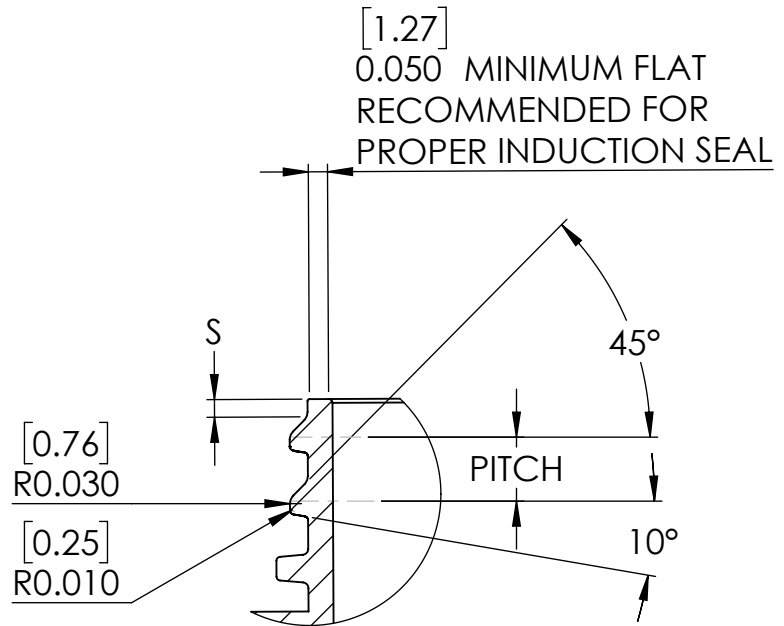
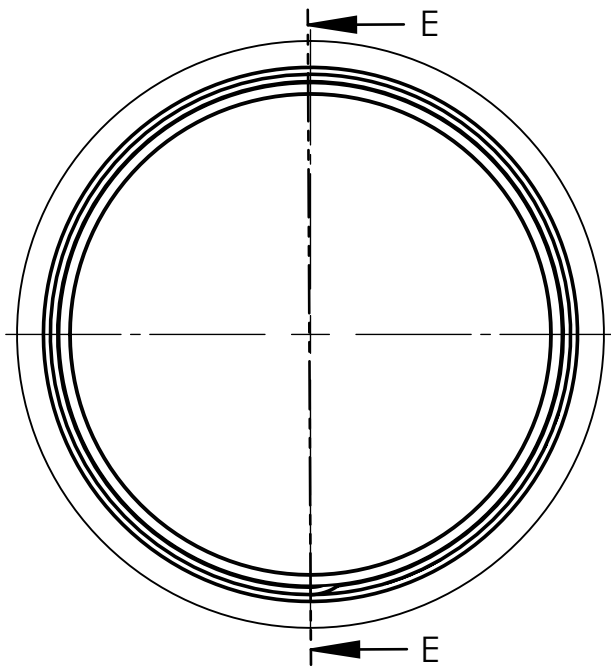
5/23/2022

SCALE	SHEET SIZE	SHEET	REV/MP
1:1	11in*8.5in	1 of 3	01.AH

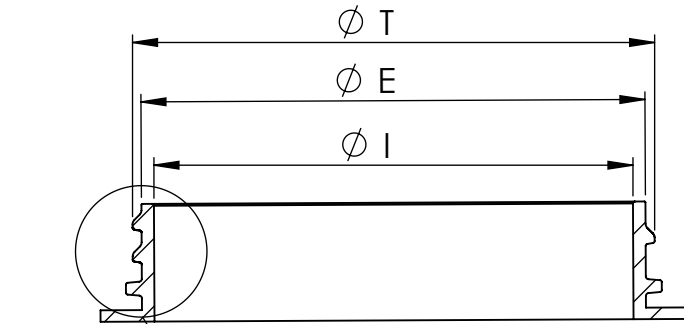
REVISIONS					
DATE	REV	N/P	DESCRIPTION	ENG	DRW
01/15/15	00	AA	INITIAL DRAWING RELEASE	LMB	LMB
05/05/15	01	AA	UPDATE SPEC BASED ON VALIDATION	CDB	CDB
06/11/15	01	AB	RELEASED DRAWING	CDB	CDB
06/30/15	01	AC	CORRECTED DATA	CDB	CDB
07/05/16	01	AD	ADDED D (SEATED) PAGE1. CORRECTED BOTTLE BEAD 2.603 WAS 3.603	BDG	BDG
05/19/18	01	AE	UPDATE DRAWING FORMAT	BDG	BDG
01/21/20	01	AF	SPECIFICATIONS UPDATED BASED ON PRODUCTION CAPABILITY. NO STEEL CHANGES OCCURED.	BDG	BDG
08/06/20	01	AG	CORRECTED TPI REFERENCE ON PAGE 3	BDG	BDG
04/18/22	01	AH	CORRECTED OAH LEADER LINE POSITION TO MEASURE AT OUTSIDE DIAMETER	BDG	BDG



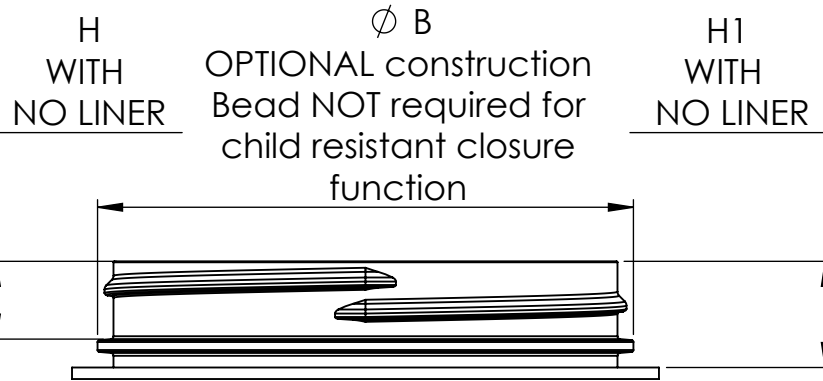
THIS MASTER DOCUMENT IS CONTROLLED ELECTRONICALLY. PRINTED OR DOWNLOADED COPIES ARE UNCONTROLLED. DOCUMENT USERS ARE RESPONSIBLE FOR ENSURING THEY HAVE THE LATEST REVISION PRIOR TO USE.	DRAWING TYPE : CUSTOMER				<div>The CARYCOMPANY</div> <div>Est. 1895</div>							
	REFERENCES:		DIMENSIONS ENCLOSED IN ( ) INDICATE REFERENCE DIMENSIONS AND NO TOLERANCE LIMITS ARE ESTABLISHED									
	PROTO 6											
	TOLERANCES UNLESS OTHERWISE SPECIFIED				<div>THIRD ANGLE PROJECTION</div> <div></div> <div>SOLIDWORKS</div>	DISTRIBUTION CODE	D	DRAWING NAME				
	DIMENSION (inches)	TOLERANCE	DIMENSION (mm)	TOLERANCE				70-400 CRC ASSM PICTO				
	0-0.787	±0.006	0-20	±0.152				DRAWING NUMBER				
	0.788-1.181	±0.008	21-30	±0.203								
	1.182-2.756	±0.012	31-70	±0.305				CQA - 10125				
	2.757-3.937	±0.016	71-100	±0.406				MATERIAL				
	3.938-5.096	±0.020	101-150	±0.508								
5.097-7.874	±0.024	151-200	±0.610	POLYPROPYLENE								
7.875-9.843	±0.032	201-250	±0.813	MODEL NUMBER								
ANGULAR TOLERANCE ± 2°				DRAWN BY.	LB	1/15/2015	PM 11145 70-400 CRC ASSM					
PROPRIETARY AND CONFIDENTIAL				ENG APPR.	BDG	5/20/2022	SCALE	SHEET SIZE	SHEET	REV.NP		
				QA APPR.	TEM	5/23/2022	1:1	8.5 X 11	2 of 3	01.AH		



DETAIL THREAD  
SCALE 2 : 1



SECTION E-E  
THREAD



REFERENCE	TOLERANCE	UNITS	DIMENSION
E	± 0.017 [0.43]	in [mm]	2.625 [66.68]
T	± 0.017 [0.43]	in [mm]	2.719 [69.06]
I	MINIMUM	in [mm]	2.247 [57.07]
S	±0.015 [0.38]	in [mm]	0.046 [1.17]
H	MINIMUM	in [mm]	0.393 [9.98]
H1	MINIMUM	in [mm]	0.538 [13.67]
B	MAXIMUM	in [mm]	2.800 [71.12]
TPI			6
PITCH		in [mm]	0.167 [4.23]

NOTE: THE NOMINAL ORIENTATION ILLUSTRATED IS BASED ON NOMINAL DIMENSIONS OF BOTH THE CLOSURE AND THE RECOMMENDED NECK FINISH. FOR EXACT ORIENTATION EACH BOTTLE SHOULD BE EVALUATED ON A CASE BY CASE BASIS.

DRAWING TYPE : CUSTOMER

DIMENSIONS ENCLOSED IN ( ) INDICATE REFERENCE DIMENSIONS AND NO TOLERANCE LIMITS ARE ESTABLISHED

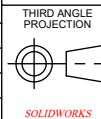
TOLERANCES UNLESS OTHERWISE SPECIFIED

DIMENSION (inches)	TOLERANCE	DIMENSION (mm)	TOLERANCE
0-0.787	±0.006	0-20	±0.152
0.788-1.181	±0.008	21-30	±0.203
1.182-2.756	±0.012	31-70	±0.305
2.757-3.937	±0.016	71-100	±0.406
3.938-5.096	±0.020	101-150	±0.508
5.097-7.874	±0.024	151-200	±0.610
7.875-9.843	±0.032	201-250	±0.813

ANGULAR TOLERANCE ± 2°

PROPRIETARY AND CONFIDENTIAL

The  
**CARY**COMPANY  
Est. 1895



DISTRIBUTION  
CODE  
**D**

DRAWING NAME  
**70-400 CRC ASSM  
RECOMMENDED NECK FINISH**  
DRAWING NUMBER  
**CQA - 10125**

DRAWN BY: LB 1/15/2015

ENG APPR: BDG 5/20/2022

QA APPR: TEM 5/23/2022

MATERIAL

MODEL NUMBER:

SCALE 1:1	SHEET SIZE 8.5 X 11	SHEET 3 of 3	REV/N/P 01.AH
--------------	------------------------	-----------------	------------------