

# IF YOU...

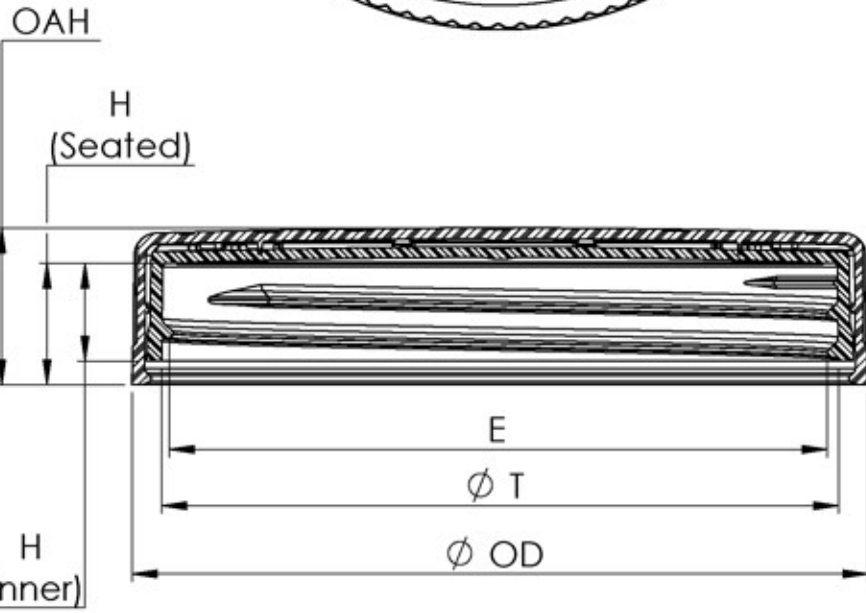
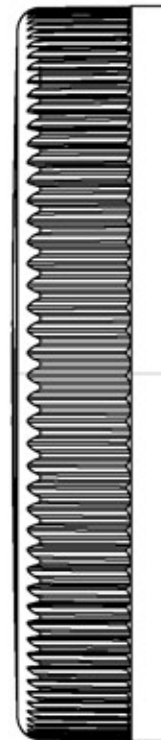


MIX IT. FILL IT. PACK IT. SHIP IT.

# WE HAVE A PRODUCT FOR YOU



Part #	30WC8F
Neck Width	89mm
Neck Finish	89-400
Cap Liner	F-217® 3-Ply Co-Extruded Foam Liner
Feature	Pictorial
Color	White
Material	PP
Case Pack	225 ea.
Pallet Pack	7,875 ea. (35 Cases)
Case Weight	18.20 lbs.
Case Dimensions	20.5" x 13.625" x 12.65"
FDA Approved	Yes
Industries	Automotive, Household Chemicals, Neutraceuticals, Pharmaceutical



SECTION A-A

.2 PITCH - 5 THREADS PER INCH  
495° FULL DEPTH THREAD

	TOLERANCE	UNITS	
E	±0.012 [0.30]	in [mm]	3.408 [86.56]
T	±0.015 [0.38]	in [mm]	3.520 [89.41]
H (Inner)	±0.008 [0.20]	in [mm]	0.506 [12.85]
H (Seated)	MINIMUM	in [mm]	0.634 [16.10]
OD	±0.012 [0.30]	in [mm]	3.839 [97.51]
OAH	±0.012 [0.30]	in [mm]	0.795 [20.19]
PART WEIGHT (ASSEMBLY)	±3.7	g	32.1

**STATIC TORQUE RECOMMENDATION**  
40-60 in-lbs  
THIS REQUIREMENT MAY VARY  
DEPENDING UPON BOTTLE MATERIAL,  
NECK FINISH, AND CAPPING EQUIPMENT

DRAWING TYPE :		CUSTOMER	
DIMENSIONS ENCLOSED IN ( ) INDICATE REFERENCE DIMENSIONS AND NO TOLERANCE LIMITS ARE ESTABLISHED			
TOLERANCES UNLESS OTHERWISE SPECIFIED			
DIMENSION (inches)	TOLERANCE	DIMENSION (mm)	TOLERANCE
0-0.787	±0.006	0-20	±0.152
0.788-1.181	±0.008	21-30	±0.203
1.182-2.756	±0.012	31-70	±0.305
2.757-3.937	±0.016	71-100	±0.406
3.938-5.096	±0.020	101-150	±0.508
5.097-7.874	±0.024	151-200	±0.610
7.875-9.843	±0.032	201-250	±0.813
ANGULAR TOLERANCE ± 2°			

The **CARY COMPANY** Est. 1895

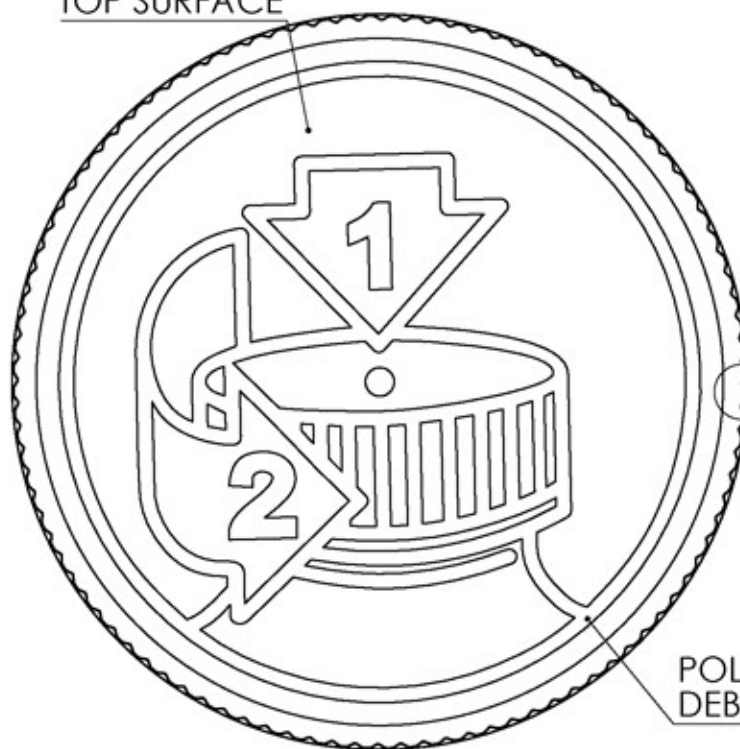
THIRD ANGLE PROJECTION	DISTRIBUTION CODE	DRAWING NAME
	D	<b>89mm-400 PDT CRC PICTO DEBOSSED</b>
DRAWN BY:	DATE	DRAWING NUMBER
L BROZELL	01/15/15	
QA APPR:	DATE	MATERIAL
A PAINE	07/06/16	PP/CO-POLY
MODEL NUMBER: 10117-01-AA 89MM PDT ASSM (MASTER)		
SCALE	SHEET SIZE	SHEET REV N/P
2:3	8½ x 11	1 of 3 02 AD

REVISION HISTORY

REV	N/P	DATE	REVISION	DE
00	AA	01/15/15	INITIAL DRAWING	LMB
01	AA	03/12/15	UPDATED DRAWING FOR REVISIONS	LMB
02	AA	05/07/15	UPDATED DRAWING FOR REVISIONS TO TOOLING AND VALIDATION DATA	CDB
02	AB	06/05/15	UPDATED TO FINAL VALIDATION DATA	CDB
02	AC	06/30/15	UPDATED TO CORRECTED VALIDATION DATA	CDB
02	AD	07/05/16	ADDED H (SEATED) DIMENSION	BDG



MATTE FINISH  
TOP SURFACE



RIB



DETAIL RIB  
SCALE 5 : 1  
(100) EQUISPACED RIBS

POLISHED INSTRUCTIONS  
DEBOSSED 0.010 [0.25]

DRAWING TYPE : CUSTOMER

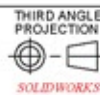
DIMENSIONS ENCLOSED IN ( ) INDICATE REFERENCE DIMENSIONS AND NO TOLERANCE LIMITS ARE ESTABLISHED

TOLERANCES UNLESS OTHERWISE SPECIFIED

DIMENSION (inches)	TOLERANCE	DIMENSION (mm)	TOLERANCE
0-0.787	±0.006	0-20	±0.152
0.788-1.181	±0.008	21-30	±0.203
1.182-2.756	±0.012	31-70	±0.305
2.757-3.937	±0.016	71-100	±0.406
3.938-5.096	±0.020	101-150	±0.508
5.097-7.874	±0.024	151-200	±0.610
7.875-9.843	±0.032	201-250	±0.813

ANGULAR TOLERANCE ± 2°

The  
**CARY COMPANY**  
Est. 1895



DISTRIBUTION CODE

D

DRAWING NAME

89mm-400 PDT CRC  
PCTO DEBOSSED

DRAWING NUMBER

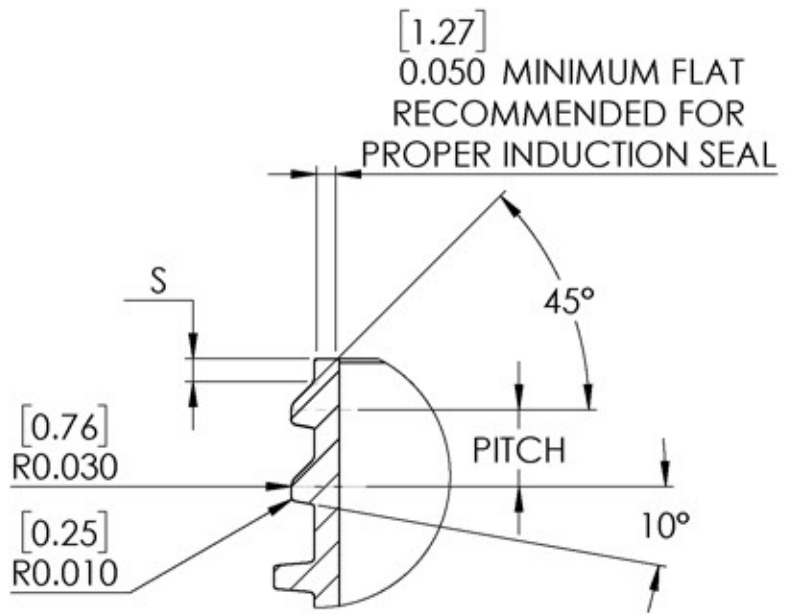
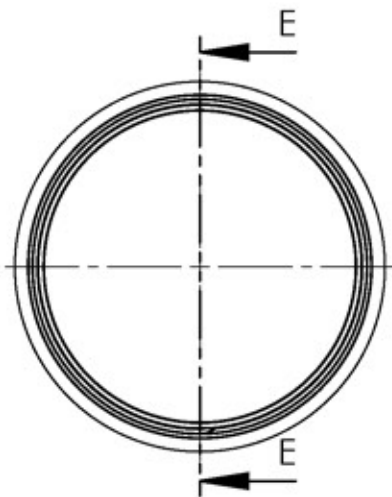
DRAWN BY: REFER TO PAGE 1

QA APPR: REFER TO PAGE 1

MATERIAL

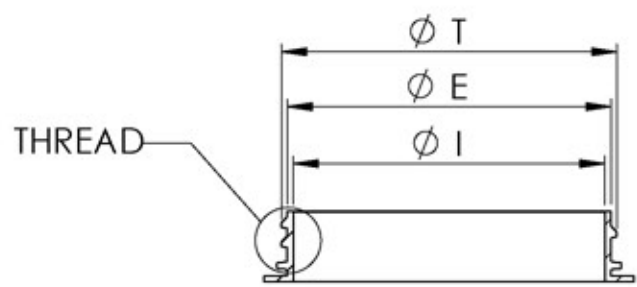
SCALE	SHEET SIZE	SHEET	REV	N/P
	8 1/2 x 11	2 of 3	02	AD

# Recommended Neck Finish

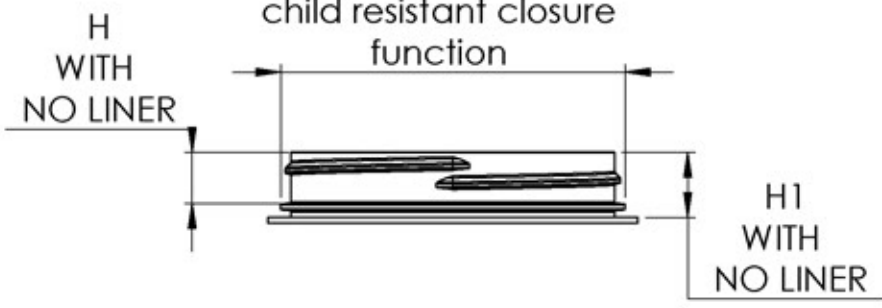


SECTION E-E  
SCALE 1 : 2

DETAIL THREAD  
SCALE 2 : 1



$\phi B$   
OPTIONAL construction  
Bead NOT required for  
child resistant closure  
function



	TOLERANCE	UNITS	
<b>E</b>	$\pm 0.017$ [0.43]	in [mm]	3.374 [85.70]
<b>T</b>	$\pm 0.017$ [0.43]	in [mm]	3.494 [88.75]
<b>I</b>	MINIMUM	in [mm]	2.918 [74.12]
<b>S</b>	$\pm 0.015$ [0.38]	in [mm]	0.060 [1.52]
<b>H</b>	MINIMUM	in [mm]	0.520 [13.21]
<b>H1</b>	MINIMUM	in [mm]	0.664 [16.87]
<b>B</b>	MAXIMUM	in [mm]	3.603 [91.52]
<b>TPI</b>			5
<b>PITCH</b>		in [mm]	0.2 [0.51]

DRAWING TYPE : CUSTOMER

DIMENSIONS ENCLOSED IN ( ) INDICATE REFERENCE DIMENSIONS AND NO TOLERANCE LIMITS ARE ESTABLISHED

TOLERANCES UNLESS OTHERWISE SPECIFIED

DIMENSION (inches)	TOLERANCE	DIMENSION (mm)	TOLERANCE
0-0.787	$\pm 0.006$	0-20	$\pm 0.152$
0.788-1.181	$\pm 0.008$	21-30	$\pm 0.203$
1.182-2.756	$\pm 0.012$	31-70	$\pm 0.305$
2.757-3.937	$\pm 0.016$	71-100	$\pm 0.406$
3.938-5.096	$\pm 0.020$	101-150	$\pm 0.508$
5.097-7.874	$\pm 0.024$	151-200	$\pm 0.610$
7.875-9.843	$\pm 0.032$	201-250	$\pm 0.813$

ANGULAR TOLERANCE  $\pm 2^\circ$

The **CARY COMPANY** Est. 1895



DISTRIBUTION CODE  
**D**

DRAWING NAME  
**89mm-400 PDT CRC PICTO DEBOSS**

DRAWN BY: REFER TO PAGE 1

QA APPR: REFER TO PAGE 1

DRAWING NUMBER

MATERIAL

SCALE	SHEET SIZE	SHEET	REV	N/P
1:2 & NOTED	8 1/2 x 11	3 of 3	02	AD