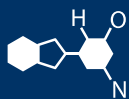


# IF YOU...



MIX IT. FILL IT. PACK IT. SHIP IT.

# WE HAVE A PRODUCT FOR YOU

Part #30WD22

Plastic Vials

8 Dram Amber Plastic Vial w/Reversible Cap, 410/cs



The  
**CARY**COMPANY  
Est. 1895

Inside Diameter of Opening- 1.00"  
Circumference - 3.140"  
Visible Height - 2.3125"

