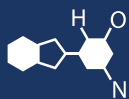


IF YOU...



MIX IT. FILL IT. PACK IT. SHIP IT.

WE HAVE A **PRODUCT** FOR YOU

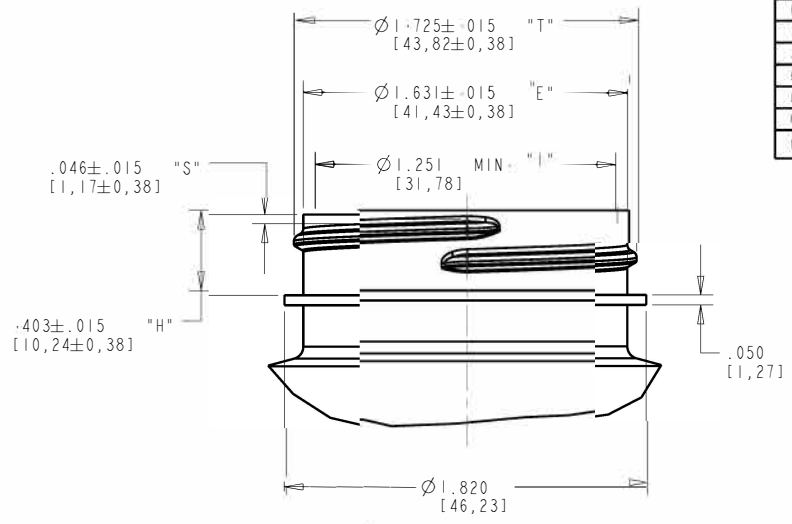
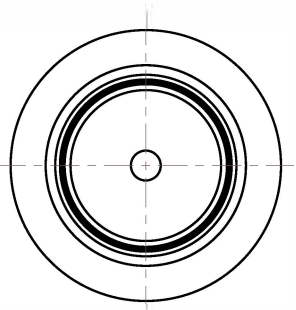
Part #: 30WDA7



The
CARYCOMPANY
Est. 1895

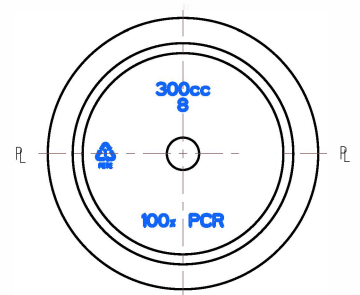
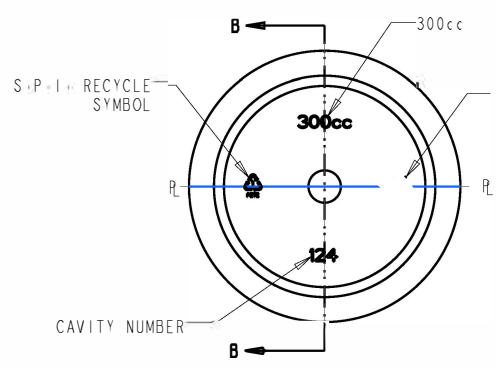
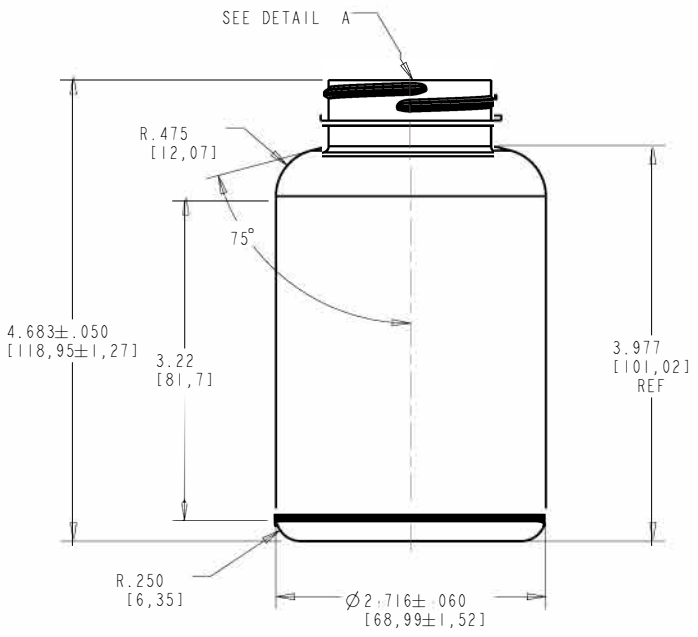
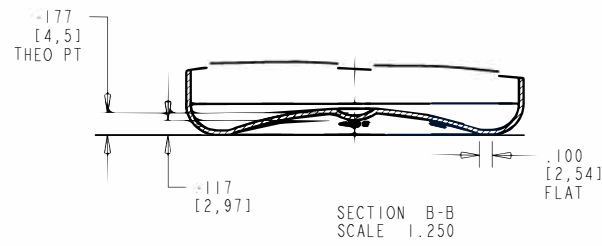
1195 W. Fullerton Ave. | Addison, IL 60101 | T: 630.629.6600 | F: 630.629.3690 |

REV	ECN	DESCRIPTION	BY	DATE
F	-	ADD STACK PACK TO HEAVY GRAM	SJ	09-OCT-01
G	-	DOC CHANGE ONLY, PROD CONFORMS	SCT	19-NOV-01
H	-	ADDED METRIC DIMENSIONS	SCT	12-MAY-10
I	-	N/A		
J	-	ADD ALT CONFIG	SCT	4-NOV-10
K	-	28g CHANGED TO 33.5g	RAB	06-FEB-13
L	-	WT TOL (+1)	SCT	13-NOV-13
M	-	REMOVE 33.5g WT	RAB	23-SEP-15
N	-	ADDED NECK FINISH NOTE, TOLERANCE NOTE & UPDATED DWG	JAZ	06-MAY-19



**NECK-DETAIL-
SCALE: 2:1**

FINISH-SPECIFICATIONS:
 1. FINISH: L45-400
 2. NO. OF TURNS: 1 FULL TURN
 3. THREADS PER INCH: 6
 4. THREAD START: 90° FROM P.L. (AS SHOWN)



- NOTES:**
 1. CRITICAL DIMENSIONS ARE SHOWN WITH TOLERANCES. CRITICAL DIMENSION TO BE USED FOR QC PURPOSES.
 2. ALL OTHER DIMENSIONS TO BE USED FOR REFERENCE ONLY.

Specification General	Min. Thk (in)	Weight (g)	Overflow (mL)	The CARY COMPANY Est. 1995	
All measurements are in inches, [mm]	.012 [0.3]	37.0 ± 3.0	368.0 ± 9.0	Scale: NPD	Drawn BY: SCT
Base engraving is subject to change location & size				1:000	1/1
Tolerance where not shown	NECK FINISH: L45-400		300cc STRAIGHT SIDED		DwaKey: N
Decimal ±0.05 [1.27]	MATERIAL: PFT		Approved BY: S.J.		Drawn Number: 300PSIXX45L400
Angular ±1°					