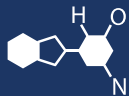


IF YOU...



MIX IT. FILL IT. PACK IT. SHIP IT.

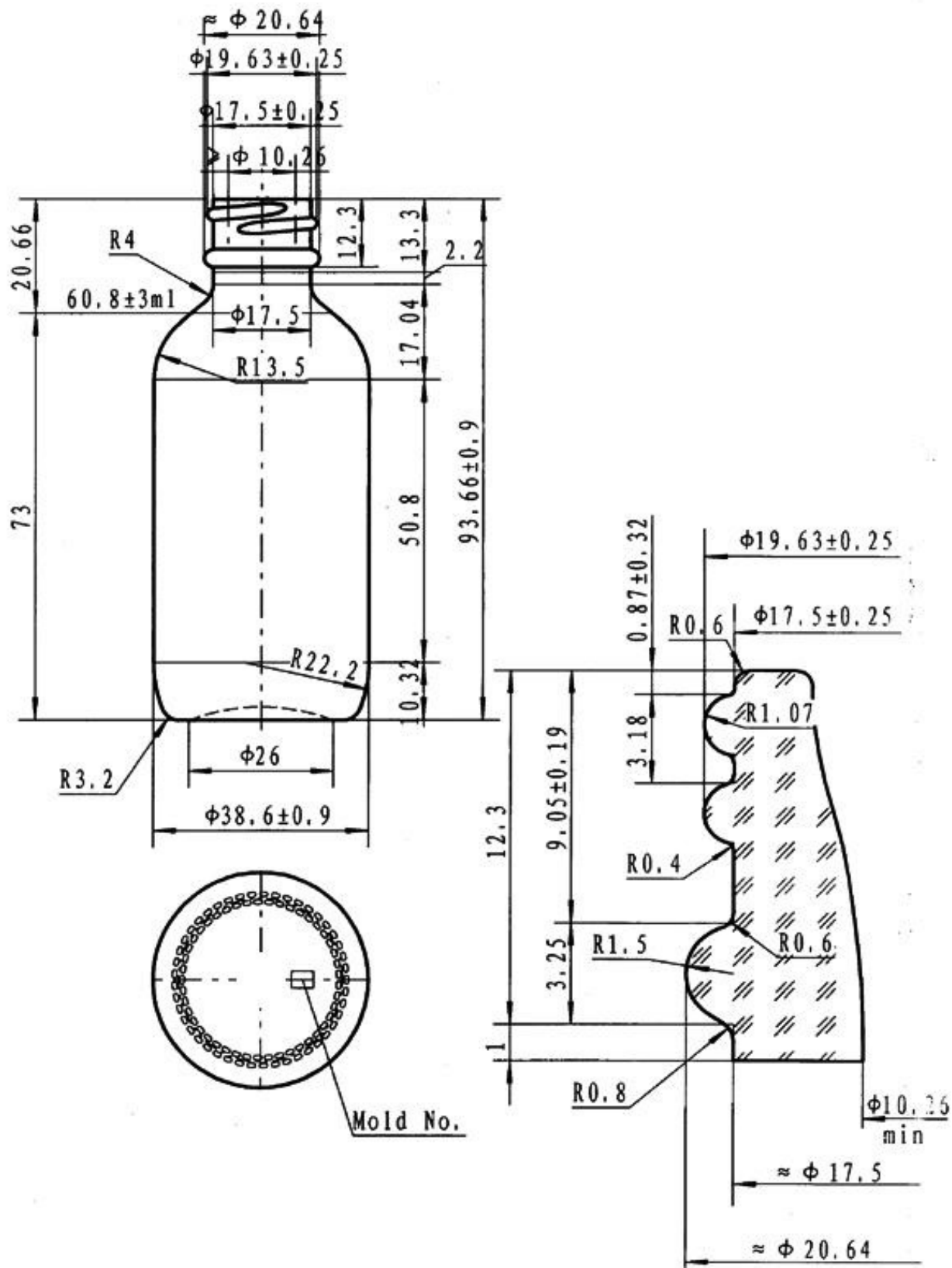
WE HAVE A **PRODUCT** FOR YOU

Part #: 30WFB2



The
CARYCOMPANY
Est. 1895

1195 W. Fullerton Ave. | Addison, IL 60101 | T: 630.629.6600 | F: 630.629.3690 |



Filling Cap.:	$60.8 \pm 3\text{ml}$	DES'D by		REF. NO.:	430601 #
		Date:		DRG. NO.:	2 oz
Brimful Cap.:	63.8ml	CHK'D by		Material	Boston Round Bottle, Type III
		Date:			Made of Soda-lime Silica Glass
Weight:	$58 \pm 7\text{g}$	APP'D by		The CARY COMPANY <small>Est. 1895</small>	
		Date:			