

# Part#: 30WFSA



Part #	Description
30WFSA	PUMP ADAPTER FOR RIEKE FLEXSPOUT II



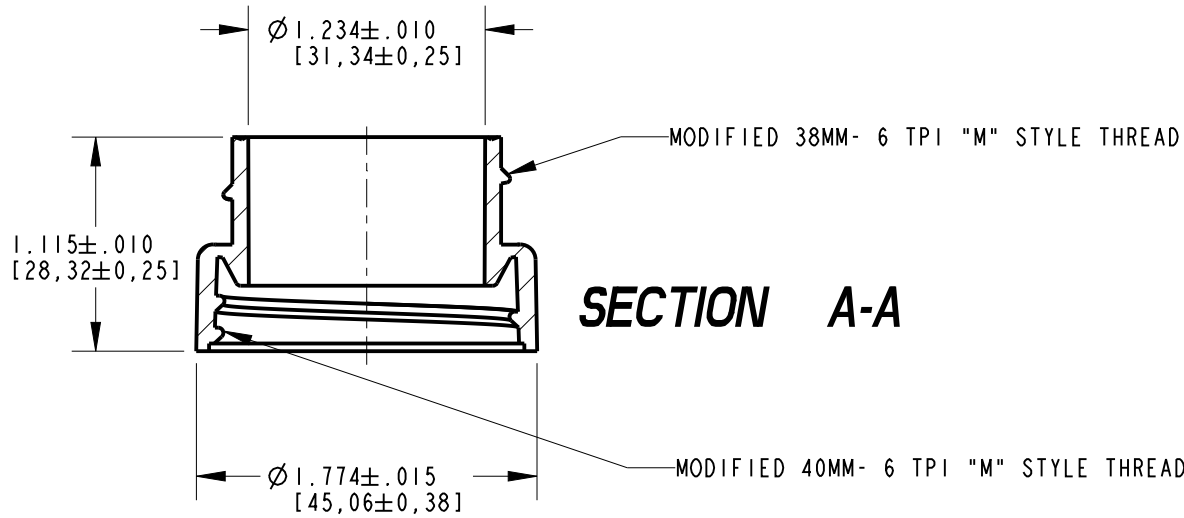
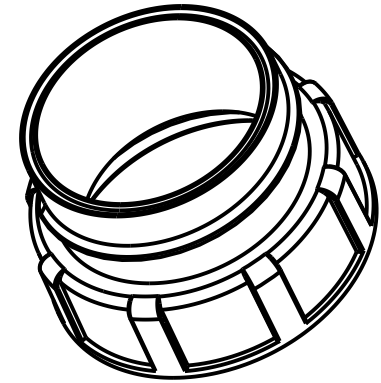
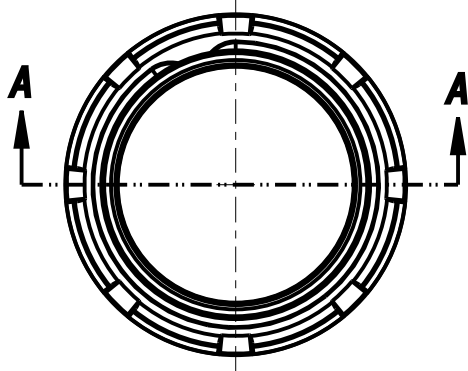
Supplied By: **The Cary Company**  
Ph: 630-629-6600  
[www.thecarycompany.com](http://www.thecarycompany.com)



1195 WEST FULLERTON - ADDISON, IL 60101 - WWW.THECARYCOMPANY.COM - PH. 630-629-6600 - FX. 630-629-3690


Description	FS40-38 ADAPTOR FOR FS10-10	
Specification number	Item Number: 03169997	
Date	July 29, 2014	Page 1 of 1
Prepared by	Jeff Hess	
Approved by	Lee Olinske	

PARAMETERS	SPECIFICATION	TEST METHOD
Material of construction	Type:- Polyethylene	COA
Standard Color (other colors available upon request)	Yellow	QC Spec Visual
Nominal dimensions in inches (mm)		QC Spec Variable/Attribute Gauge
Opening Print Drawing Number	N/A	Rev:
Special markings		
Accessories		
Applied torque		
Method of delivery	250 /carton polybagged - ~ 1.2 lbs. gross/carton - n/a cartons/pallet	
Components	FS-10-10 thread adaptor (40mm to 38mm)	Drawing No. 28003062 Rev: none



# CUSTOMER DRAWING

PRO-E


 Supplied By: The Cary Company  
 Ph: 630-629-6600  
 www.thecarycompany.com

BREAK ALL SHARP EDGES WITH 1/64" RADIUS, UNLESS OTHERWISE SPECIFIED

DATE

30-JAN-13

DRAWN BY

SCK

CHECKED

JLH

APPROVED

SCALE

NTS

ANGLES ±1/4°

X.XX [X.X] ±0.10 [0,25]

X.XXX [X.XX] ±0.005 [0,13]

CHANGE NUMBER	CHANGE	DATE	BY

THIS DOCUMENT AND ITS CONTENTS DISCLOSE INFORMATION THAT IS PROPRIETARY TO RIEKE PACKAGING SYSTEMS. NEITHER POSSESSION OR RECEIPT OF THIS DOCUMENT, OR ITS INTENT, CONFERS OR TRANSFERS ANY RIGHT TO REPRODUCE, USE, OR DISCLOSE ANY PART OF ITS CONTENT EXCEPT BY WRITTEN AUTHORIZATION FROM RIEKE PACKAGING SYSTEMS.

TITLE		FLEXSPOUT ADAPTER 40 x 38mm	
PRODUCT		FLEXSPOUT	
DRAWING NUMBER		28003062	
MFG LOCATION		DETAIL NUMBER	
MATERIAL		TEMPER	
		FS4038	

